

# 1200 Series Runway Sweepers

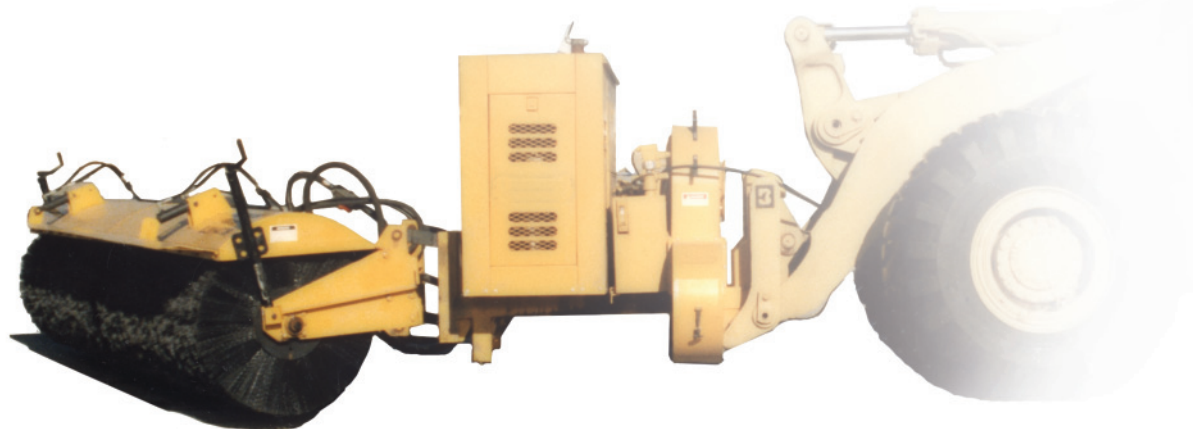
1200 Series Runway Sweepers for loaders, tractors and trucks.

## FEATURES

- Self-leveling frame, adjustable brush pattern, hydrostatic drive and heavy duty swing
- Provide the flexibility of the brush, mounting, air blast, power system and mounting vehicles to adapt to all your sweeping needs
- Two sizes of airblast systems available
- Flexible design provides a wide variety of mounting vehicles including: unimogs, trucks, tractors, loaders, motor graders and tow-behind
- Two basic power options available: PTO power and Independent Engine power



PALADIN LIGHT CONSTRUCTION



# 1200 Series Brush & Mounting

## Hydrostatic Brush Drive

- Hydrostatic Pump - The brush is powered by a closed loop, variable speed, hydrostatic drive system. The heart of this virtually indestructible drive system is a roller bearing, variable piston type pump. An electrically activated, adjustable swash plate in the pump gives in finitely variable brush speeds. In-cab control lets the operator adjust the brush speed from his seat. This drive system eliminates high maintenance drive components used on mechanical sweepers.
- Brush Drive - The brush cores are driven from each end by a hydrostatic motor. All motors and moving components are mounted inside the brush framework to protect against accidental collision damage.

## In-Cab Control

- This efficient feature means your operator can control all of the brush and airblast functions with one finger! Control the speed of the engine and brush with a flip of the switch. Change the position of the brush head, air deflector and airblast on each pass quickly and easily. Start or stop the engine and turn on the headlights without leaving the seat.

## High-Speed Brush

- The standard 10ft wide, 36" diameter spacer less brush is available in polypropylene, wire or a combination of 1/2 poly and 1/2 wire. Optional brush widths up to 18ft are available. The core is divided in half for easy brush change and balance. Sweepster High Speed no shed brushes meet military specification number MIL-F-83002.

## Adjustable Brush Pattern

- The brush pattern adjusts with only one bolt. The operator can quickly set the correct brush pattern to meet any sweeping condition, even in bad weather. Sweeping with the correct brush pattern reduces brush wear and extends brush.

## Adjustable Brush Hood Stripper

- The 1200 Series has an adjustable brush hood bolted to the brush frame. Two crank handles easily adjust the hood as the brush wears. The front edge acts as a stripper cleaning snow, slush, water & debris from the brush & preventing carry over from falling back on the runway.

## Self-Leveling Brush Frame

- A revolutionary, independent, spherical bearing suspension carries the brush. Combined with the brush caster design, this mounting allows the brush to move up and down both perpendicular and parallel to the line of travel. Free movement keeps the brush level, reducing brush wear and extending the brush life.

## Heavy Duty Swing

- The swing assembly is constructed of heavy duty rectangular tubing. The pivot point is bearing mounted for easy movement.

## Caster System

- The greatest percentage of the weight of the sweeper is carried on the casters, not on the vehicle. The Sweepster caster system enables large sweepers to be mounted on a variety of prime movers such as trucks, agricultural tractors or wheel loaders. Swivel casters are mounted on the rear of the brush frame, traveling in the swept path of the brush. They are heavy-duty, vertical axle casters. Two taper roller bearings support each caster shaft.
- The casters are equipped with the exclusive Sweepster anti-shimmy system. This simple system prevents damage prevalent in complicated hydraulic caster anti-shimmy systems.
- The caster tires are nitrogen filled. The rims are welded to the hub to prevent wheel bolts from coming loose. The bearings and seals are the same on both the caster axle and fork.

## Hydraulic Air Deflector

- The hydraulic air deflector directs snow down towards the runway or up for the wind to carry it away. In-cab controls lets the operator quickly adjust the air deflector to meet changing sweeping conditions.

PH: (800) 456-7100  
FX: (734) 996-9014

2800 North Zeeb Road  
Dexter, MI 48130  
United States of America

[www.paladinbrands.com](http://www.paladinbrands.com)

SA-1200 Series Runway Sweeper 0702-1



# 1200 Series

## Vehicle

The mounting vehicle is the portion of the 1200 Series with the greatest flexibility.

Choose the vehicle that best fits your needs and we will fit the 1200 to it. Or use an existing vehicle that is already in your snow removal fleet. The flexible design of the 1200 Series gives you a wide variety of mounting vehicles.

## Power Supply

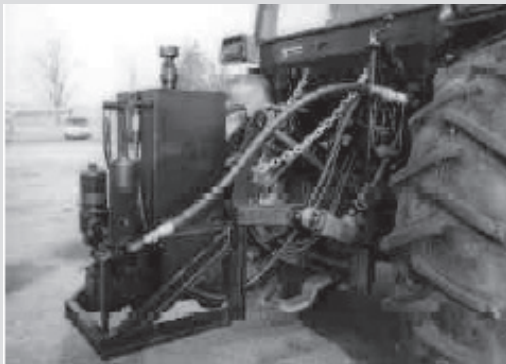
There are two basic options for powering the 1200 Series. Tractor or unimog vehicles power the brush from the vehicle PTO. Trucks and some loaders require a separate independent engine.

### PTO Power

- PTO power for the 1200 Series features a closed loop, variable displacement, piston pump mounted directly to the PTO.

### Independent Engine Power

- The closed loop, variable displacement, piston pump is mounted directly to the engine output shaft. The engine can be permanently mounted or quick disconnect. Engines from 110 HP to 300 HP are available to power the sweeper system. A weatherproof enclosure covers the engine and pumps.



## Airblast System

Many airports require an airblast system. Two sizes are available with a choice of mountings.

### High Capacity Fan

- The fan is a 5,000 CFM single inlet, double outlet, centrifugal blower. This high capacity fan provides air velocity up to 150 mph. A 10,000 CFM fan is also available with air velocity up to 225 mph. The blower is capable of moving water and sand off the runway and removing fresh fallen snow from runway lights in one pass.

### Hydrostatic Airblast Drive

- The airblast is powered by an independent, closed loop, hydrostatic system driven from a rear mounted engine. The hydrostatic motor is mounted directly to the fan blade shaft. The pump is connected to the sweeper engine. Direct power drive eliminates belts, chains and other machinery susceptible to high wear and high maintenance costs.

### Air Delivery

- The direction of the airblast automatically changes right or left when the brush is angled. Change the brush and airblast direction from the operators seat with the in-cab control.

### Choice of Mounting

- The airblast can be mounted in two locations depending on the prime mover. It can mount in front of the vehicle behind the brush, or on the rear of the vehicle.



PH: (800) 456-7100  
FX: (734) 996-9014

2800 North Zeeb Road  
Dexter, MI 48130  
United States of America

[www.paladinbrands.com](http://www.paladinbrands.com)



PALADIN LIGHT CONSTRUCTION