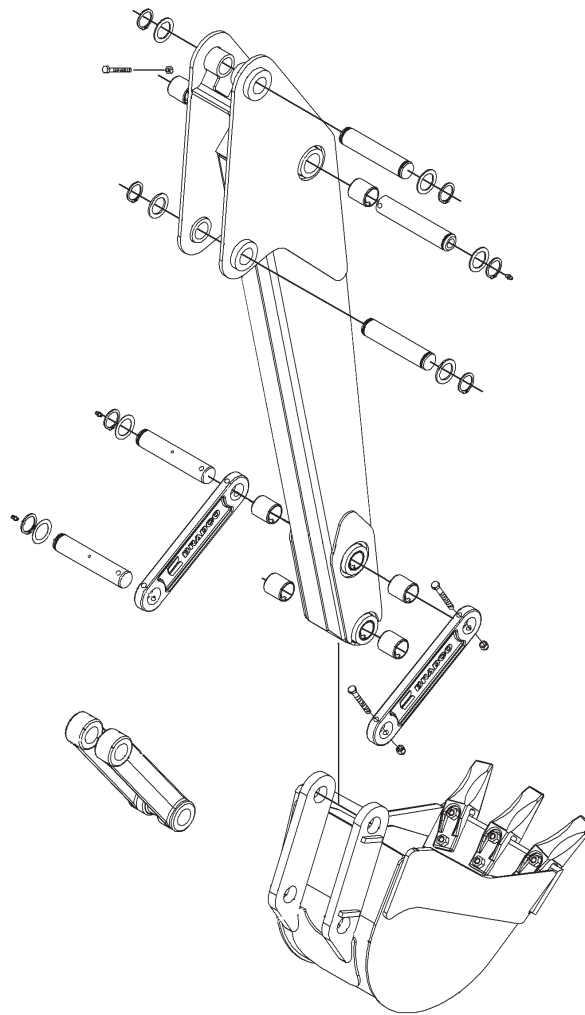


485 BACKHOE PARTS MANUAL

 **BRADCO** **FFC** **HARLEY** **THE MAJOR** **McMILLEN** **SWEEPSTER****PALADIN** LIGHT CONSTRUCTION**SERIAL NUMBER:** _____**MODEL NUMBER:** _____**Manual Number: PM708**
Part Number: 75608
Rev.

LIMITED WARRANTY

All new Bradco products are warranted to be free from defects in materials or workmanship which may cause failure under normal usage and service when used for the purpose intended.

In the event of failure within twenty four (24) months from initial retail sale, lease or rental date (excluding cable, ground engaging parts such as sprockets, digging chain, bearings, teeth, tamping and demolition heads, blade cutting edges, pilot bits, auger teeth, auger heads & broom bristles), if after examination, Bradco determines failure was due to defective material and/or workmanship, parts will be repaired or replaced. Bradco may request defective part or parts be returned prepaid to them for inspection at their place of business at Delhi, Iowa, or to a location specified by Bradco.

Any claims under this warranty must be made within fifteen (15) days after the Buyer learns of the facts upon which such claim is based. All claims not made in writing and received by Bradco within the time period specified above shall be deemed waived.

THIS WARRANTY IS IN LIEU OF ALL OTHER WARRANTIES EXPRESSED OR IMPLIED AND THERE ARE NO WARRANTIES OF MERCHANTABILITY OR OF FITNESS FOR A PARTICULAR PURPOSE. IN NO EVENT SHALL BRADCO BE LIABLE FOR CONSEQUENTIAL OR SPECIAL DAMAGE.

BRADCO'S LIABILITY FOR ANY AND ALL LOSSES AND DAMAGES TO BUYER, RESULTING FROM ANY CAUSE WHATSOEVER, INCLUDING BRADCO'S NEGLIGENCE, IRRESPECTIVE OF WHETHER SUCH DEFECTS ARE DISCOVERABLE OR LATENT, SHALL IN NO EVENT EXCEED THE PURCHASE PRICE OF THE PARTICULAR PRODUCTS WITH RESPECT TO WHICH LOSSES OR DAMAGES ARE CLAIMED, OR, AT THE ELECTION OF BRADCO, THE REPAIR OR REPLACEMENT OF DEFECTIVE OR DAMAGED PRODUCTS.

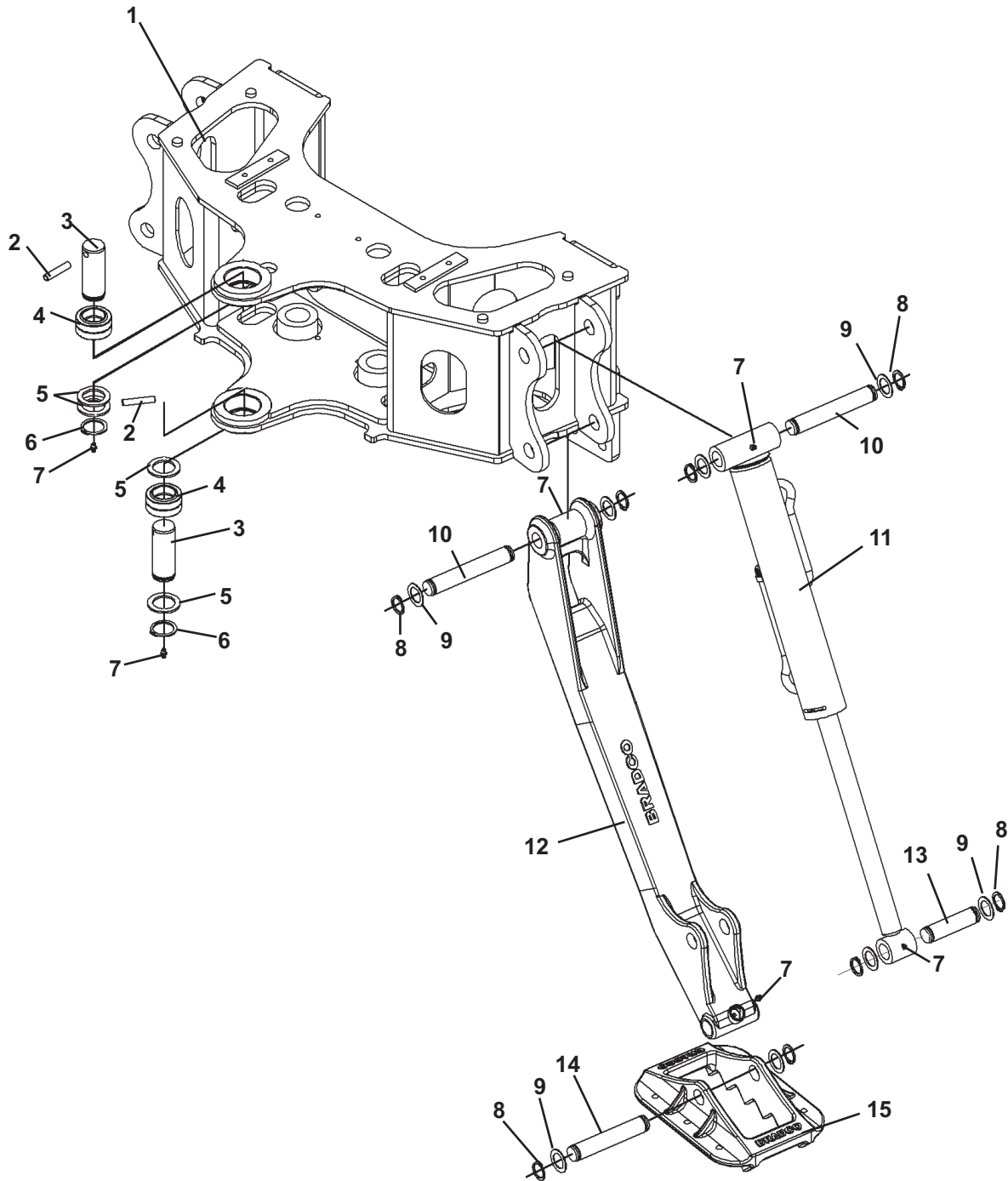
TABLE OF CONTENTS

MAINFRAME ASSEMBLY	#105300
MAINFRAME / STABILIZERS	4-5
SWING POST	6-7
3-POINT HITCH ADAPTER KIT	#108320
3-POINT HITCH ADAPTER.....	8-9
BOOM & DIPPER ASSEMBLY	#105301
BOOM.....	10-11
DIPPER	12-13
CONSOLE ASSEMBLY	#105302
CONSOLE	14-15
VALVE ASSEMBLY	#2264
VALVE	17
VALVE ASSEMBLY.....	18-19
CYLINDER ASSEMBLIES	
SWING CYLINDER #105328	20-21
STABILIZER CYLINDER #103649	22-23
BOOM CYLINDER #105322	24-25
DIPPER CYLINDER #105314	26-27
BUCKET CYLINDER #105306.....	28-29
MAINFRAME HOSE KIT	#38462
MAINFRAME HOSES	30-31
BOOM & DIPPER HOSE KIT	#38463
BOOM & DIPPER HOSES	32-33
BUCKET OPTIONS	34-35
STABILIZER PAD OPTIONS	36-37
DECAL SET	#40943
DECAL PLACEMENT	38
DECALS	39-40

MAINFRAME ASSEMBLY

ASSEMBLY #105300

DIAGRAM 1 OF 2



10684 8-18-06

75608

MAINFRAME ASSEMBLY

ASSEMBLY #105300

LIST 1 OF 2

<u>ITEM</u>	<u>REQ'D</u>	<u>PART NO.</u>	<u>DESCRIPTION</u>
1	1	105334	Mainframe
2	2	10035	Roll Pin
3	2	105377	Mainframe Pivot Pin 1.38" x 3.75"
4	2	6615	Self-Aligning Bushing
5	Varies	6623	Thrust Washer 1.38" x .031"
	Varies	64724	Thrust Washer 1.38" x .090"
	Varies	64725	Thrust Washer 1.38" x .125"
6	2	1650	Snap Ring
7	10	6616	Grease Fitting
8	16	6612	Snap Ring
9	Varies	57462	Thrust Washer 1.00" x .06
10	4	105367	Stabilizer Pivot Pin 1.00" x 6.31"
11	2	103649	Stabilizer Cylinder Assembly
	-	45478	Replacement Cylinder Seal Kit
12	2	102621	Stabilizer Arm
13	2	89978	Pivot Pin 1.00" x 3.25"
14	2	104459	Stabilizer Pad Pivot Pin 1.00" x 4.98"
15	2	102619	Stabilizer Pad (Optional Bolt-On Rubber Pad Kit #103676)

10685 8-18-06

MAINFRAME ASSEMBLY

ASSEMBLY #105300

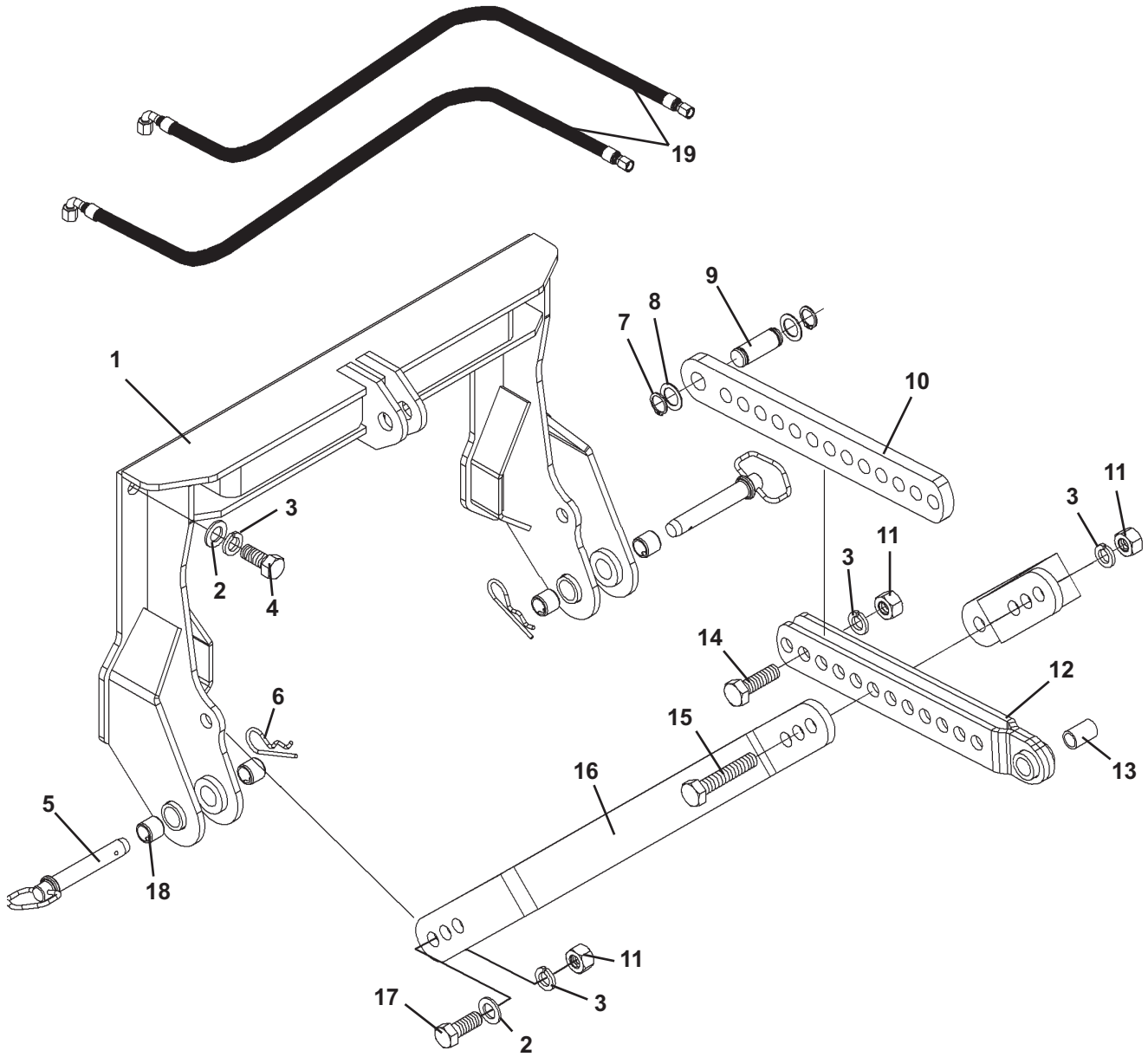
LIST 2 OF 2

<u>ITEM</u>	<u>REQ'D</u>	<u>PART NO.</u>	<u>DESCRIPTION</u>
1	4	1043	.38" UNC X 1.00" Hex Capscrew
2	4	1503	.38" Lock Washer
3	4	1514	.38" Flat Washer
4	4	81807	Spacer Tube
5	2	53031	90° Grease Fitting
6	2	105362	Cylinder Pivot Pin - Top 1.50" x 4.50"
7	4	82441	Needle Bearing
8	2	30164	Special Tee 6MBo-6MJ-6MJ
9	2	1652	Snap Ring
10	Varies	57693	Thrust Washer 1.25" x .078"
	Varies	64727	Thrust Washer 1.25" x .123"
	Varies	64728	Thrust Washer 1.25" x .031"
11	5	6616	Grease Fitting
12	2	104463	Cylinder Pin 1.25" x 5.00"
13	3	10035	Roll Pin
14	2	105365	Cylinder Pivot Pin - Bottom 1.50" x 3.12"
15	1	87363	Swing Lock Pin
16	1	105748	Swing Post
17	1	104466	Boom Cylinder Pin 1.25" x 3.00"
18	2	1976	Rotor Clip
19	1	105368	Boom Pivot Pin 1.38" x 8.19"
20	Varies	6623	Thrust Washer 1.38" x .031"
	Varies	64724	Thrust Washer 1.38" x .090"
	Varies	64725	Thrust Washer 1.38" x .125"
21	1	1650	Snap Ring
22	2	105328	Swing Cylinder Assembly (Includes (4) 86564 Bushings & (4) Needle Bearings)
	-	45703	Replacement Cylinder Seal Kit
23	2	68057	Thrust Washer, 1.50" x .071"

10687 8-18-06

3-POINT HITCH ADAPTER KIT

ASSEMBLY #108320



3-POINT HITCH ADAPTER KIT

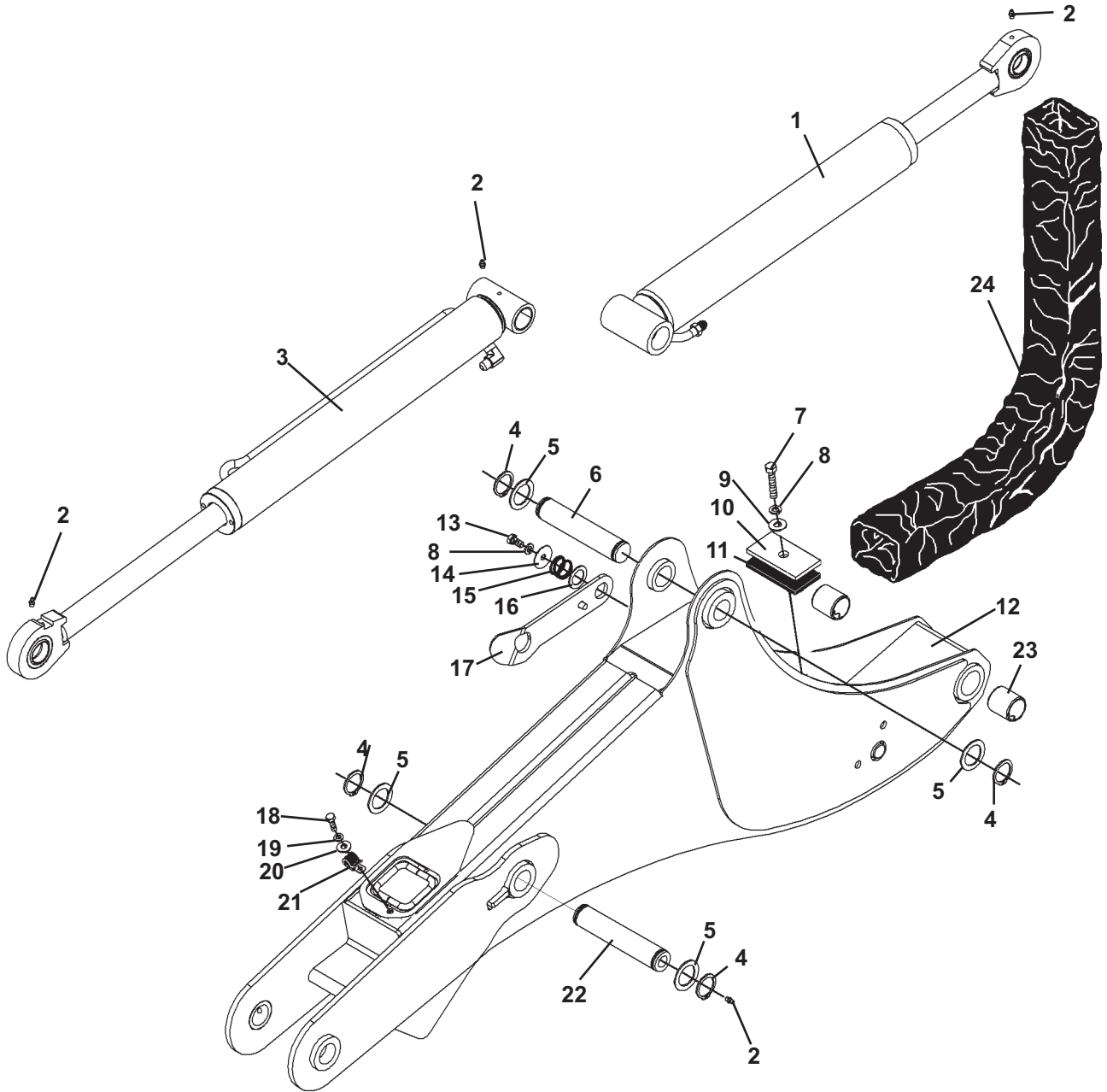
ASSEMBLY #108320

<u>ITEM</u>	<u>REQ'D</u>	<u>PART NO.</u>	<u>DESCRIPTION</u>
1	1	107615	3-Point Mount
2	10	1649	.75" Hard Flat Washer
3	12	1507	.75" Lock Washer
4	8	1138	.75" UNC X 1.75" Hex Capscrew
5	2	1987	.875" Hitch Pin - Cat. I Hitch (Includes Item #6)
	2	1988	1.125" Hitch Pin - Cat. II Hitch (Includes Item #6)
6	-	1985	Hair Pin - Cat. I Hitch
	-	1991	Hair Pin - Cat. II
7	2	6612	Snap Ring
8	2	57462	Thrust Washer
9	1	86620	Pivot Pin
10	1	107101	Single Link
11	4	1534	.75" UNC Lock Nut
12	1	107548	Double Link
13	1	87984	Spacer Tube (Remove for Cat. II Hitch)
14	1	1141	.75" UNC X 2.50" Hex Capscrew
15	1	1147	.75" UNC X 4.00" Hex Capscrew
16	2	107549	Hitch Arm Lock
17	2	1139	.75" UNC X 2.00" Hex Capscrew
18	4	106204	Bushing (Remove for Cat. II Hitch)
19	2	38490	Hose .50" X 40" 8MBo-8FJX 90°

10715 8-29-06

BOOM & DIPPER ASSEMBLY

ASSEMBLY #105301



BOOM & DIPPER ASSEMBLY

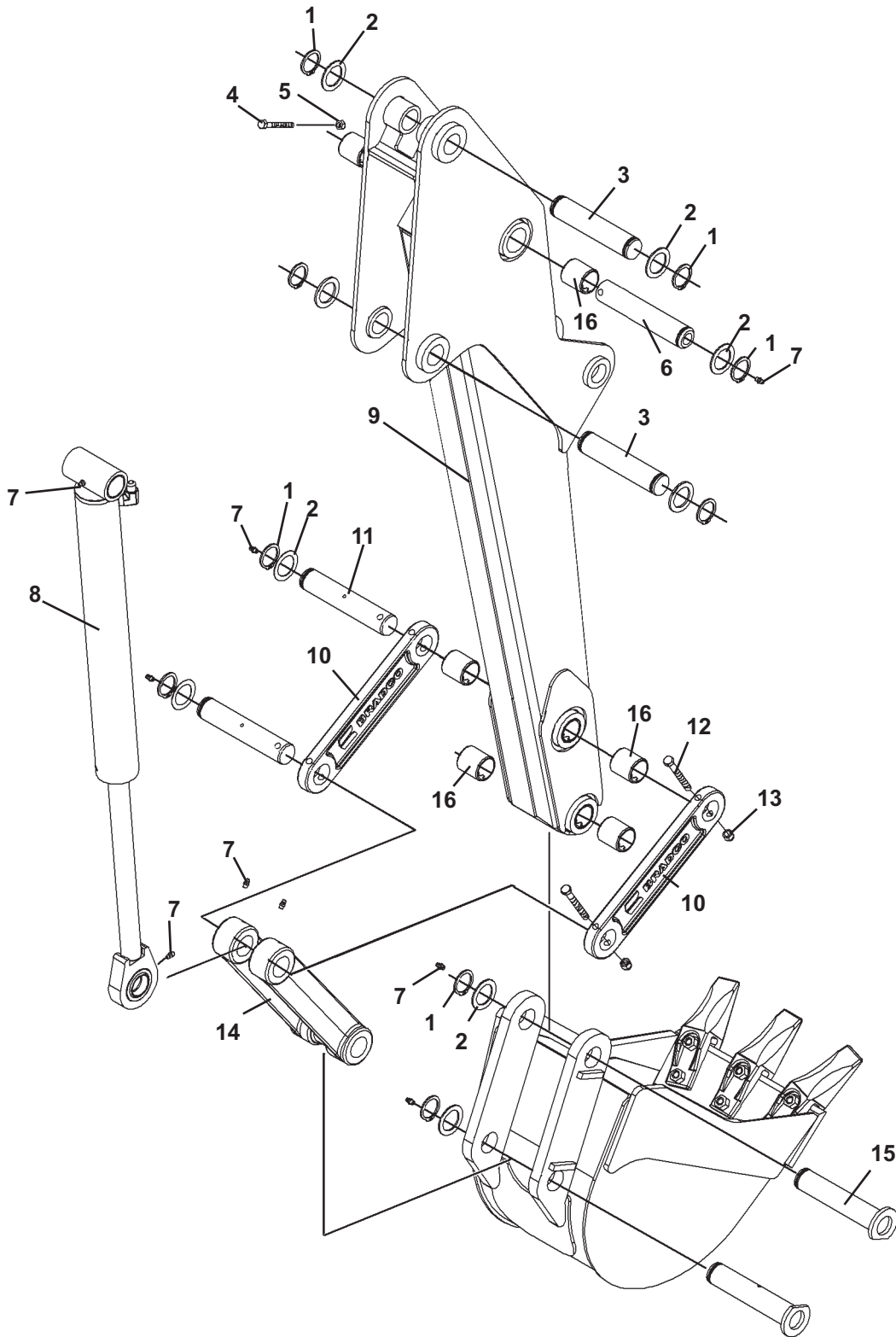
ASSEMBLY #105301

<u>ITEM</u>	<u>REQ'D</u>	<u>PART NO.</u>	<u>DESCRIPTION</u>
1	1	105322	Boom Cylinder Assembly (Includes (1) 62523 Bushing and (2) 85772 Bushings)
	-	45618	Replacement Cylinder Seal Kit
2	4	6616	Grease Fitting
3	1	105314	Dipper Cylinder Assembly (Includes (2) 85772 Bushings and (1) 6615 Bearing)
	-	45738	Replacement Cylinder Seal Kit
4	4	1650	Snap Ring
5	Varies	6623	Thrust Washer 1.38" x .031"
	Varies	64724	Thrust Washer 1.38" x .090"
	Varies	64725	Thrust Washer 1.38" x .125"
6	1	105369	Dipper Cylinder Pin 1.38" x 6.18"
7	1	1046	.38" UNC X 1.75" Hex Capscrew
8	2	1503	.38" Lock Washer
9	1	1514	.38" Flat Washer
10	1	81881	Hose Clamp Plate
11	1	81882	Rubber Spacer
12	1	105250	Boom (Includes (2) 81610 Bushings)
13	1	1042	.38" UNC X .75" Hex Capscrew
14	1	22298	Special Washer
15	1	105245	Compression Spring
16	1	57462	Thrust Washer 1.00"
17	1	105278	Boom Lock
18	1	1022	.31" UNC X 1.00" Hex Capscrew
19	1	1502	.31" Lock Washer
20	1	1513	.31" Flat Washer
21	1	82859	Double Hose Clamp
22	1	105372	Boom Cylinder Pin 1.38" x 7.06"
23	-	81610	Replacement Bushing (Included in Boom)
24	1	34078	Hose Sock 4" x 40"

10689 8-22-06

BOOM & DIPPER ASSEMBLY

ASSEMBLY #105301



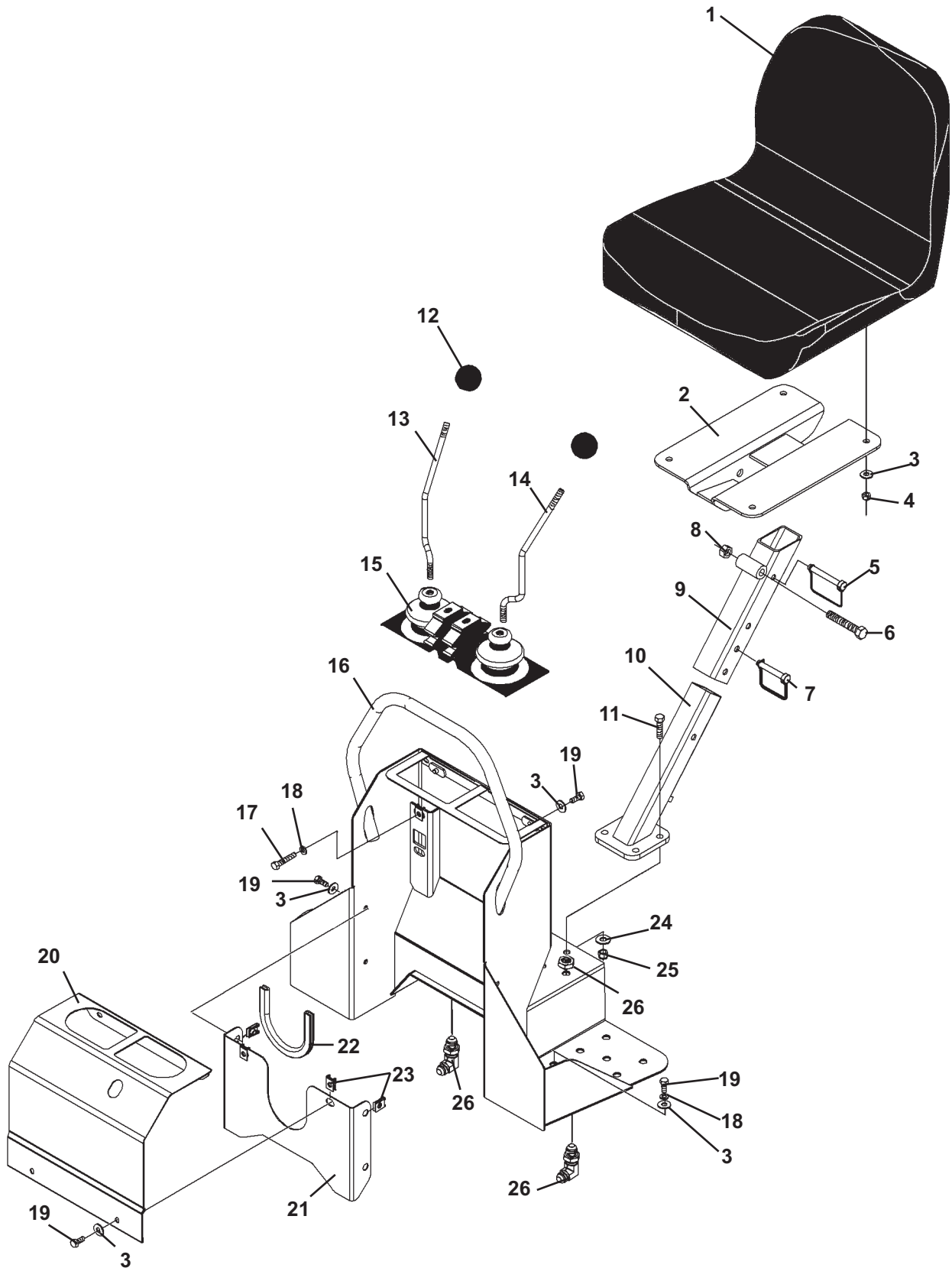
BOOM & DIPPER ASSEMBLY

ASSEMBLY #105301

<u>ITEM</u>	<u>REQ'D</u>	<u>PART NO.</u>	<u>DESCRIPTION</u>
1	9	1650	Snap Ring
2	Varies	6623	Thrust Washer 1.38" x .031"
	Varies	64724	Thrust Washer 1.38" x .090"
	Varies	64725	Thrust Washer 1.38" x .125"
3	2	105370	Dipper Cylinder Pin 1.38" x 6.31"
4	1	1029	.31" UNC X 2.75" Hex Capscrew
5	1	1753	.31" UNC Nylock Nut
6	1	105371	Boom Pivot Pin 1.38" x 7.38"
7	10	6616	Grease Fitting
8	1	105306	Bucket Cylinder Assembly (Includes (2) 85772 Bushings and (1) 6615 Bearing)
	-	45478	Replacement Cylinder Seal Kit
9	1	105267	Dipper (Includes (6) 81610 Bushings)
10	2	105391	Dipper Link
11	2	105373	Dipper Link Pivot Pin 1.38" x 7.13"
12	2	1052	.38" UNC X 3.25" Hex Capscrew
13	2	1536	.38" UNC Nylock Nut
14	1	105390	Bucket Link
15	2	105375	Bucket Pivot Pin 1.38" x 7.13"
16	-	81610	Replacement Bushing (Included in Dipper)

CONSOLE ASSEMBLY

ASSEMBLY #105302



CONSOLE ASSEMBLY

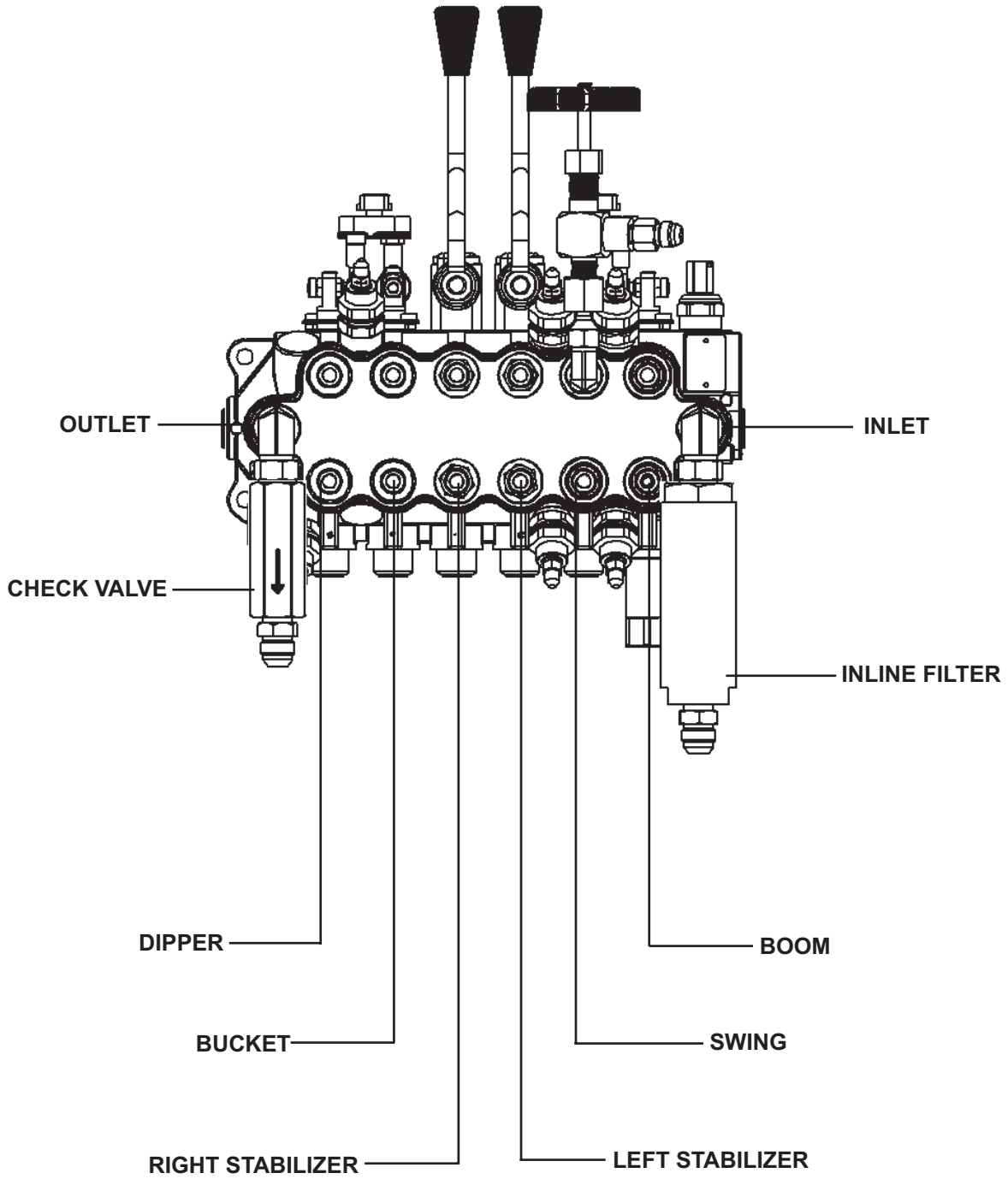
ASSEMBLY #105302

<u>ITEM</u>	<u>REQ'D</u>	<u>PART NO.</u>	<u>DESCRIPTION</u>
1	1	105988	Seat
2	1	107438	Seat Mounting
3	16	1513	.31" Lock Washer
4	4	1753	.31" UNC Nylock Nut
5	1	107439	Safety Snap Pin (3" Long)
6	1	1096	.50" UNC X 3.00" Hex Capscrew
7	1	105247	Safety Snap Pin (2.50" Long)
8	1	1841	.50" UNC Deformed Lock Nut
9	1	105241	Seat Mounting Tube
10	1	105240	Seat Pedestal
11	4	1044	.38" UNC X 1.25" Hex Capscrew
12	2	85838	Ball Knob
13	1	87952	Right Control Handle
14	1	87951	Left Control Handle
15	1	83235	Rubber Control Lever Boot
16	1	105347	Console
17	3	1025	.31" UNC X 1.75" Hex Capscrew
18	7	1502	.31" Lock Washer
19	12	1021	.31" UNC X .75" Hex Capscrew
20	1	105237	Console Cover
21	1	105238	Console Hose Cover
22	1	34128	Rubber Edging
23	9	1756	.31" UNC Spring Nut
24	4	1514	.38" Flat Washer
25	4	1536	.38" UNC Nylock Nut
26	2	3382	90° Bulkhead Fitting 8MJ-8MJ (Includes Nut)

10693 8-22-06

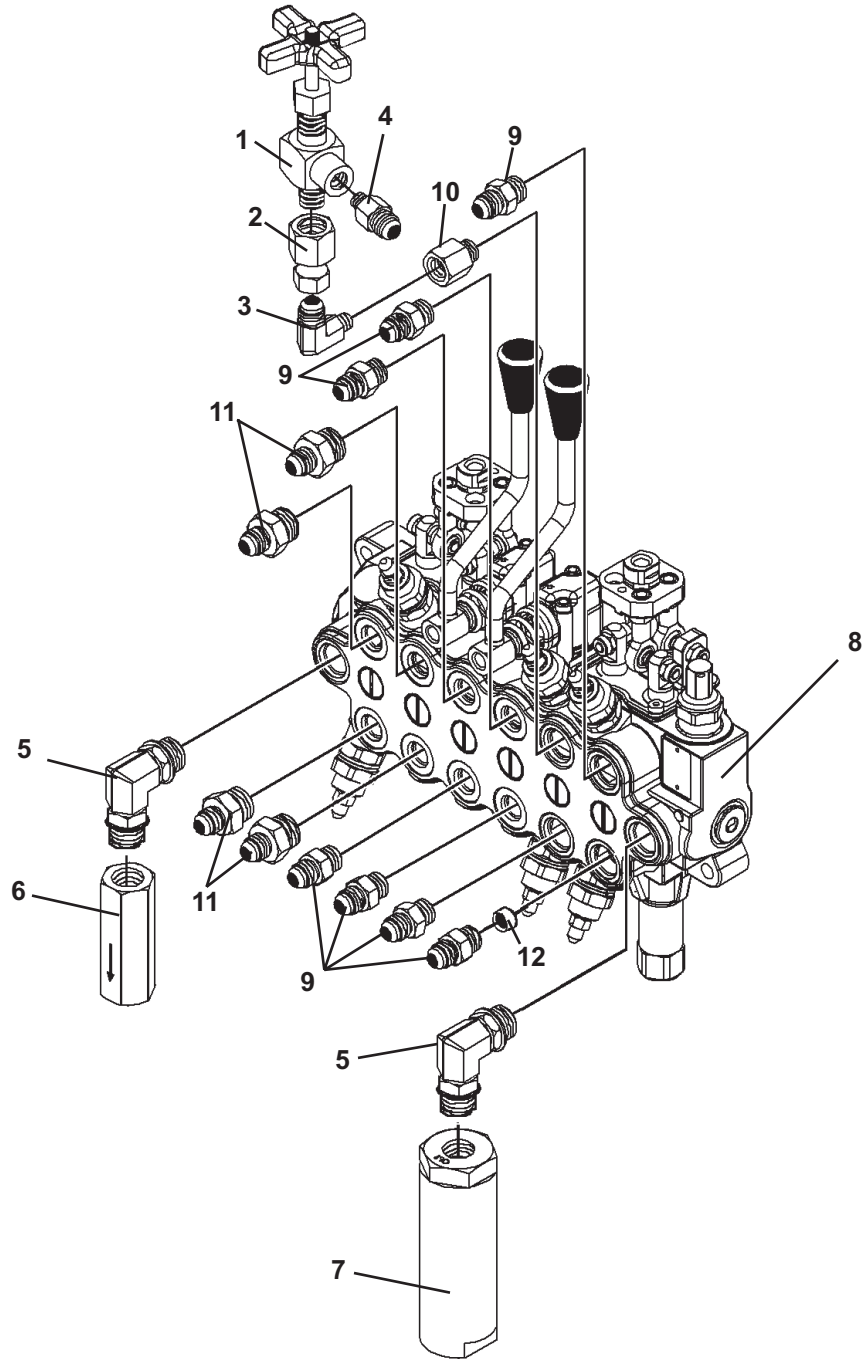
VALVE ASSEMBLY

ASSEMBLY #2264



VALVE ASSEMBLY

ASSEMBLY #2264



VALVE ASSEMBLY

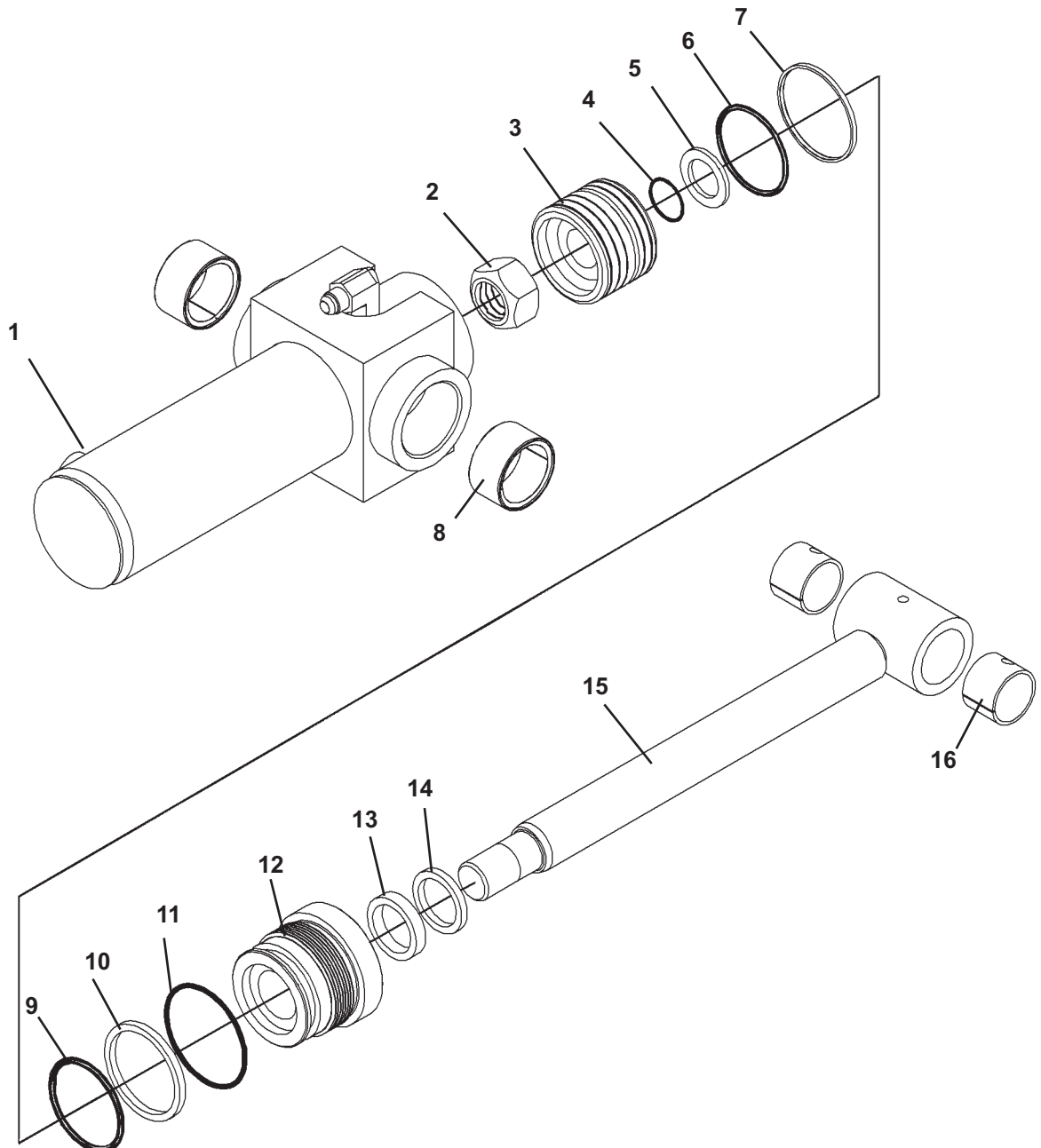
ASSEMBLY #2264

<u>ITEM</u>	<u>REQ'D</u>	<u>PART NO.</u>	<u>DESCRIPTION</u>
1	1	3185	Needle Valve
2	1	30187	Straight Connector 4FP-6FJX
3	1	3001	90° Elbow 4MP-6MJ
4	1	3137	Straight Connector 6MJ-4MP
5	2	30193	90° Elbow 8MBo-8MBo
6	1	107636	Check Valve (Hex) (Not Included in Valve Assembly #2264)
7	1	107635	Inline Filter (Round) (Not Included in Valve Assembly #2264)
8	1	105303	Valve - Bucher Monoblock (Includes Items #9 - #12)
9	7	3457	Replacement Connector 6MBo-6MJ (Included with Valve)
10	1	3461	Replacement Connector 6MBo-4FP (Included with Valve)
11	4	3269	Replacement Connector 8MBo-6MJ (Included with Valve)
12	1	45967	Restrictor Orifice (Included with Valve)

10696 8-22-06

SWING CYLINDER ASSEMBLY

ASSEMBLY #105328



SWING CYLINDER ASSEMBLY

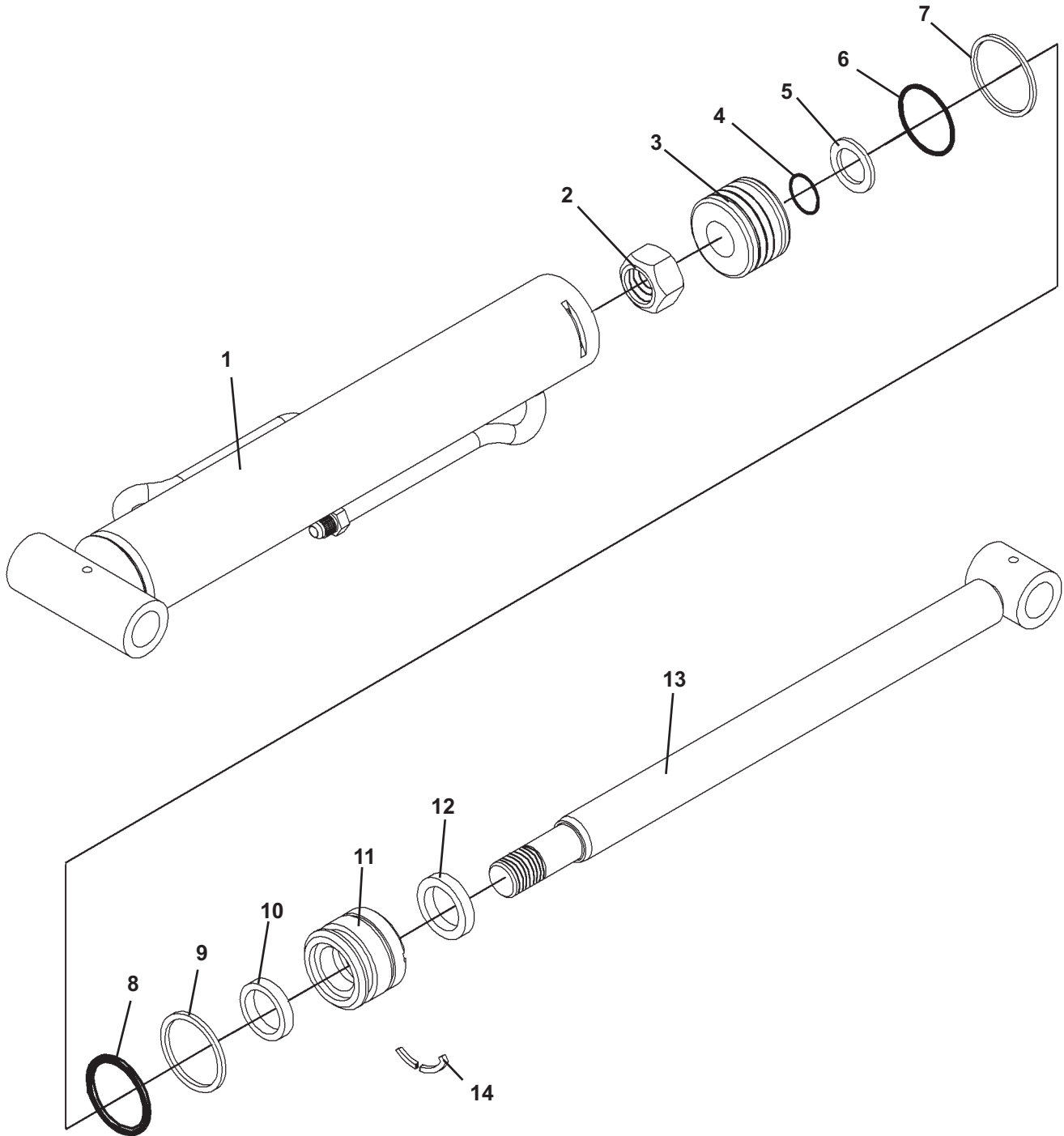
ASSEMBLY #105328

<u>ITEM</u>	<u>REQ'D</u>	<u>PART NO.</u>	<u>DESCRIPTION</u>
1	1	105329	Cylinder Tube
2	1	1483	Hex Nut (Torque to 230-325 ft. lbs.)
3	1	105333	Piston
4	1	4641*	O'Ring
5	1	5421	Washer
6	1	4645*	O'Ring
7	1	4644*	Piston Ring
8	2	82441	Needle Bearing
9	1	4509*	O'Ring
10	1	4510*	Back-Up Washer
11	1	45250*	O'Ring
12	1	77458	Gland
13	1	45219*	Poly-Pak Seal
14	1	45389*	Rod Wiper
15	1	105331	Cylinder Rod
16	2	86564*	Bushing

NOTE: Seal Kit #45617 includes all parts marked with an asterisk(*). Parts are not sold separately.

STABILIZER CYLINDER ASSEMBLY

ASSEMBLY #103649



STABILIZER CYLINDER ASSEMBLY

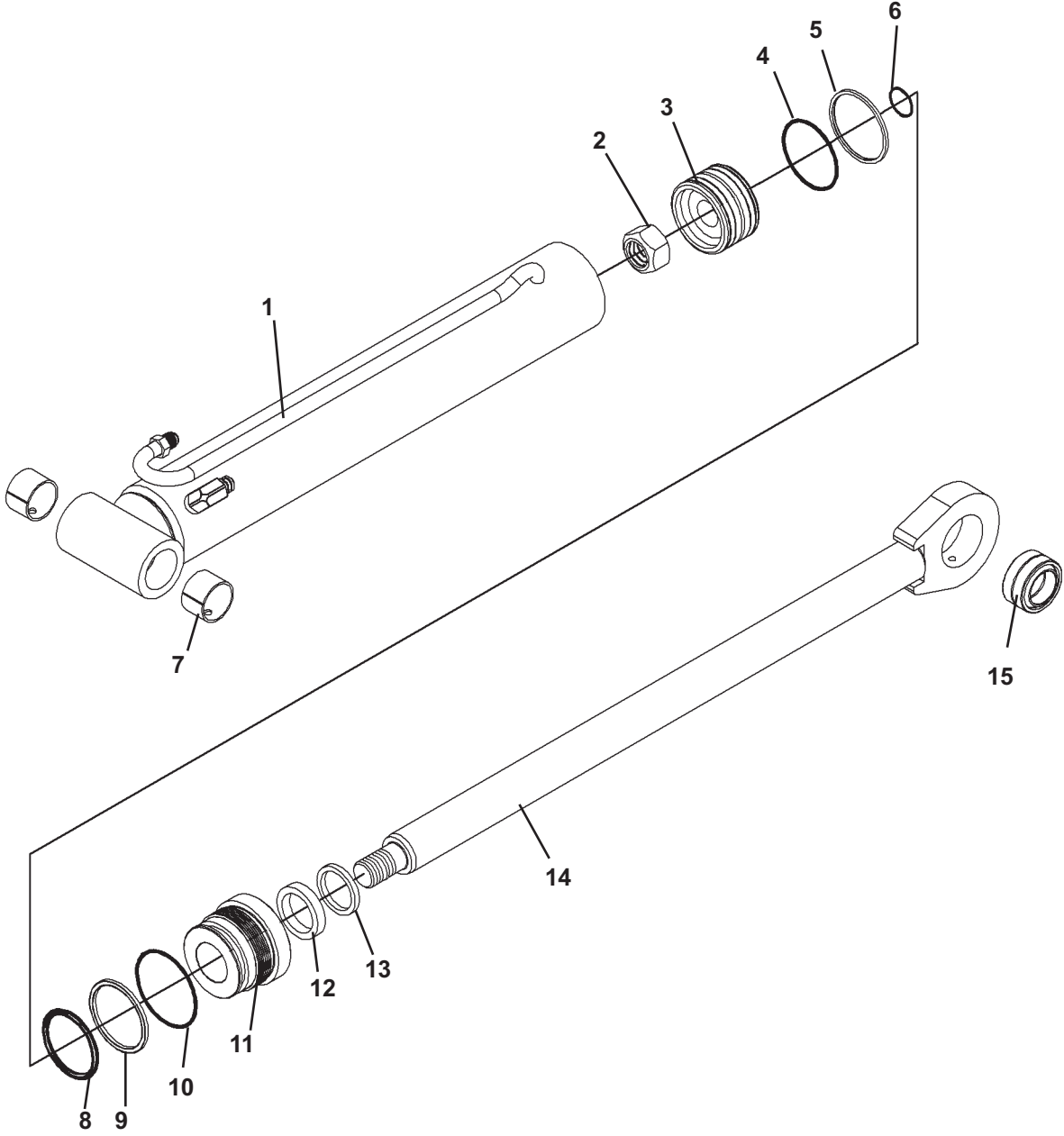
ASSEMBLY #103649

<u>ITEM</u>	<u>REQ'D</u>	<u>PART NO.</u>	<u>DESCRIPTION</u>
1	1	103651	Cylinder Tube
2	1	1483	Hex Nut (Torque to 230-325 ft. lbs.)
3	1	106372	Piston
4	1	4641*	O'Ring
5	1	5421	Washer
6	1	45443*	O'Ring
7	1	45701*	Piston Ring
8	1	45699*	O'Ring
9	1	45700*	Back-Up Washer
10	1	45219*	Poly-Pak Seal
11	1	86508	Gland
12	1	4974*	Rod Wiper
13	1	103650	Cylinder Rod
14	1	7165*	Gland Retainer Rod

NOTE: Seal Kit #45478 includes all parts marked with an asterisk(*). Parts are not sold separately.

BOOM CYLINDER ASSEMBLY

ASSEMBLY #105322



BOOM CYLINDER ASSEMBLY

ASSEMBLY #105322

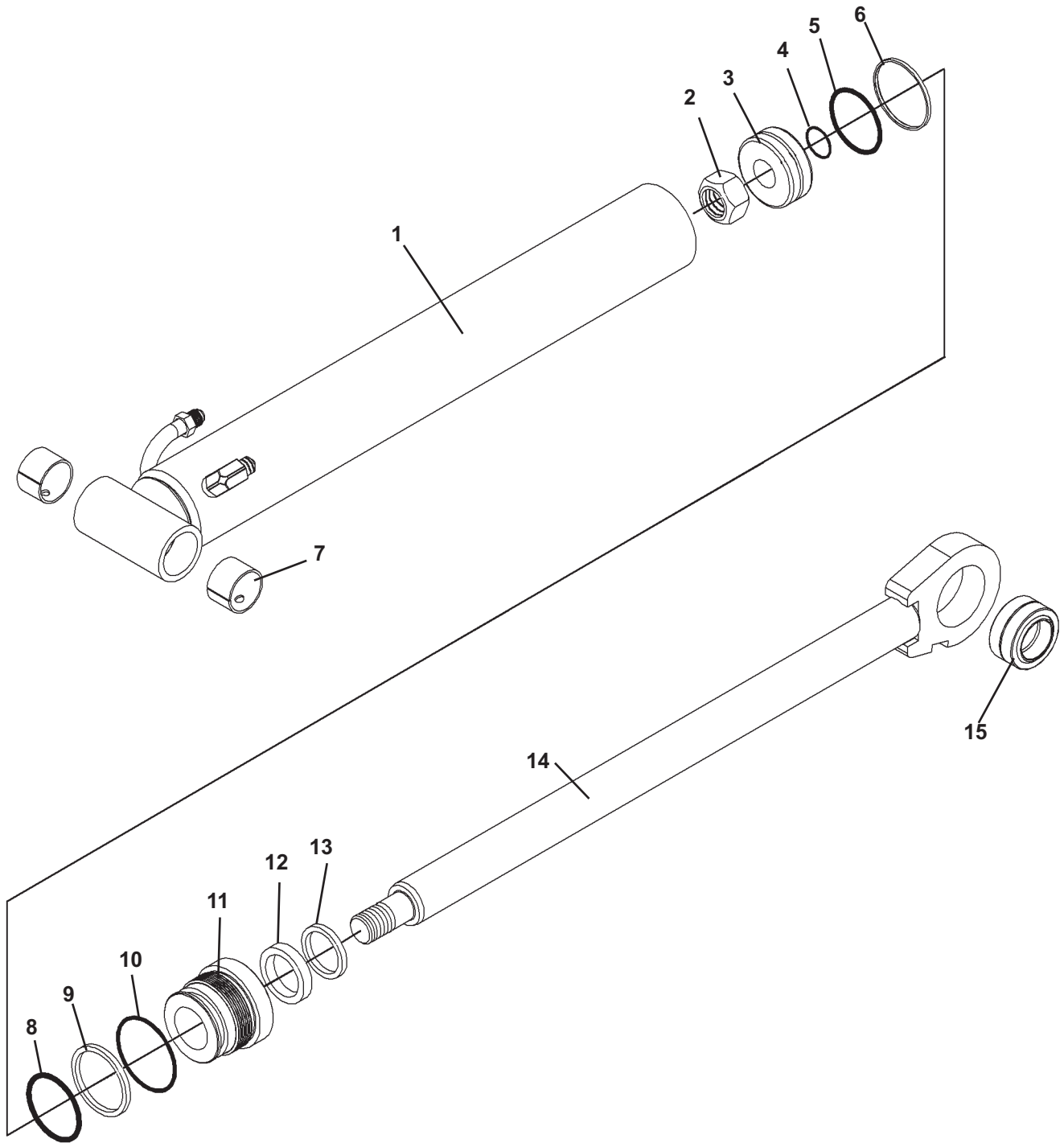
<u>ITEM</u>	<u>REQ'D</u>	<u>PART NO.</u>	<u>DESCRIPTION</u>
1	1	105323	Cylinder Tube
2	1	1483	Hex Nut (Torque to 230-325 ft. lbs.)
3	1	105320	Piston
4	1	45250*	O'Ring
5	1	45251*	Piston Ring
6	1	4641*	O'Ring
7	2	85772	Bushing
8	1	45557*	O'Ring
9	1	45249*	Back-Up Washer
10	1	4570*	O'Ring
11	1	82449	Gland
12	1	45225*	Poly-Pak Seal
13	1	45372*	Rod Wiper
14	1	105326	Cylinder Rod
15	1	62523	Self-Aligning Bushing

NOTE: Seal Kit #45618 includes all parts marked with an asterisk(*). Parts are not sold separately.

10702 8-23-06

DIPPER CYLINDER ASSEMBLY

ASSEMBLY #105314



DIPPER CYLINDER ASSEMBLY

ASSEMBLY #105314

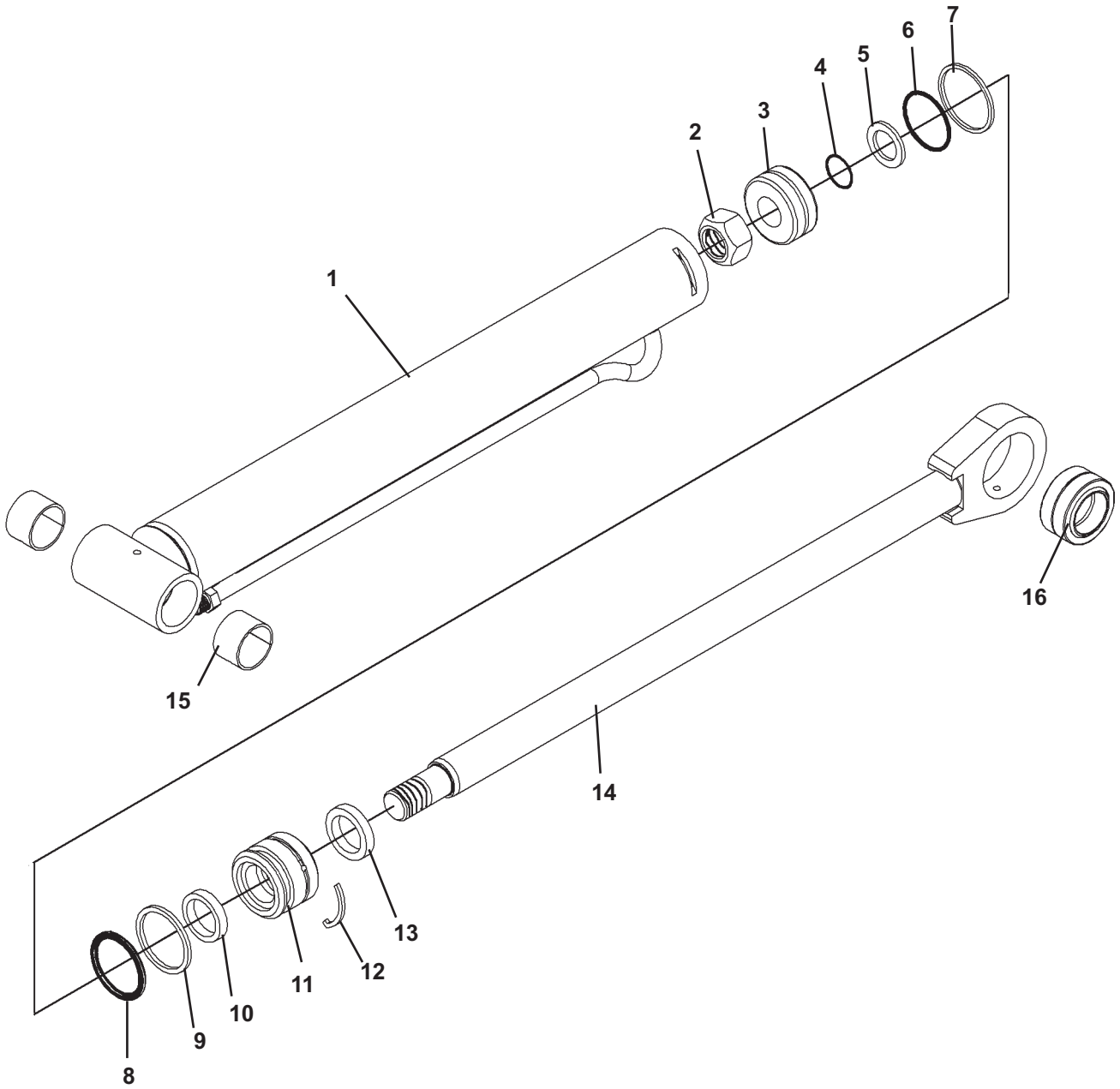
<u>ITEM</u>	<u>REQ'D</u>	<u>PART NO.</u>	<u>DESCRIPTION</u>
1	1	105315	Cylinder Tube
2	1	1483	Hex Nut (Torque to 230-325 ft. lbs.)
3	1	50252	Piston
4	1	4641*	O'Ring
5	1	4645*	O'Ring
6	1	4644*	Piston Ring
7	2	85772	Bushing
8	1	4509*	O'Ring
9	1	4510*	Back-Up Washer
10	1	45250*	O'Ring
11	1	86609	Gland
12	1	45225*	Poly-Pak Seal
13	1	45372*	Rod Wiper
14	1	105318	Cylinder Rod
15	1	6615	Bushing

NOTE: Seal Kit #45738 includes all parts marked with an asterisk(*). Parts are not sold separately.

10700 8-23-06

BUCKET CYLINDER ASSEMBLY

ASSEMBLY #105306



BUCKET CYLINDER ASSEMBLY

ASSEMBLY #105306

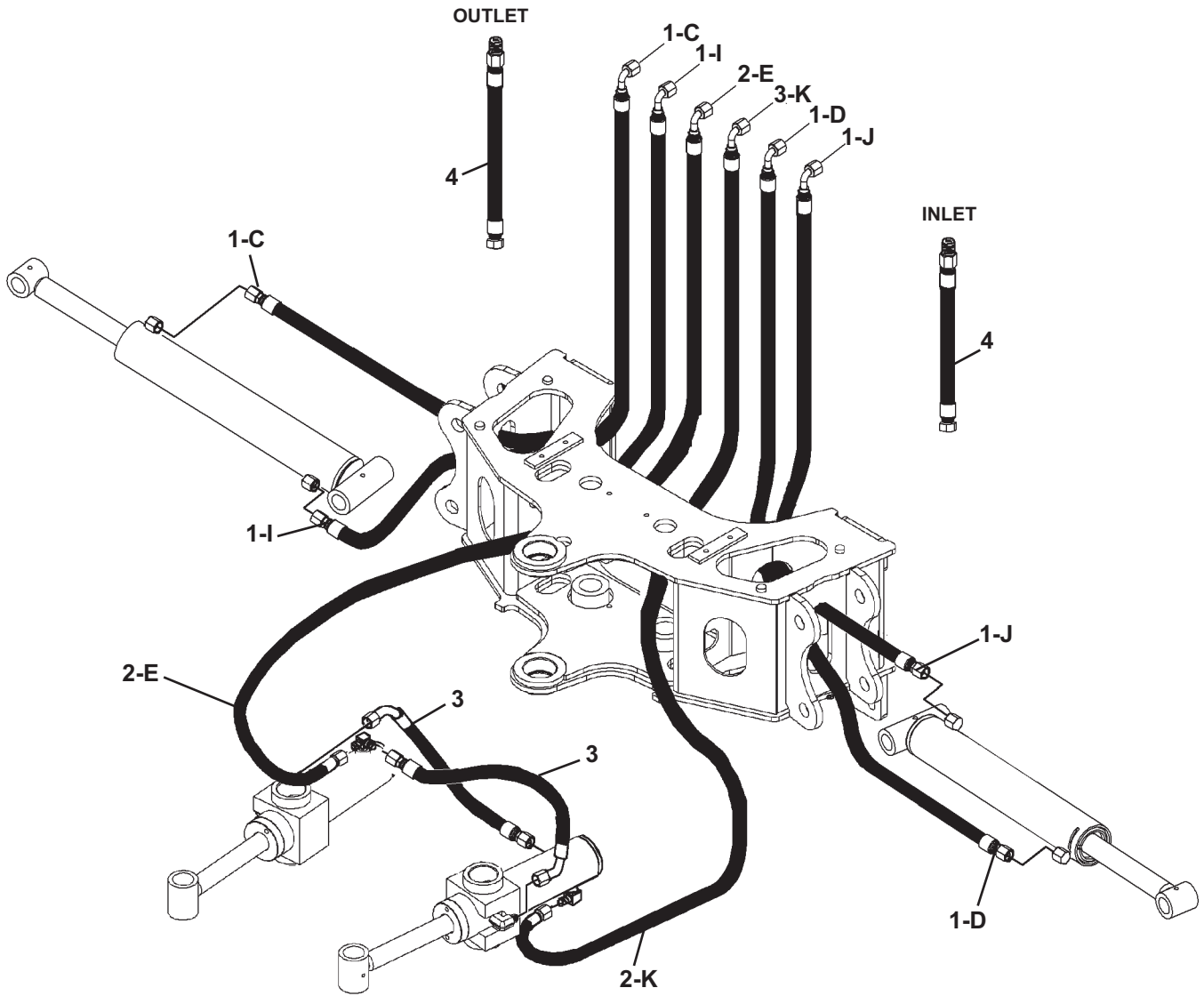
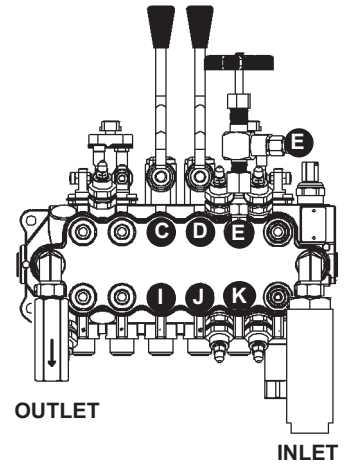
<u>ITEM</u>	<u>REQ'D</u>	<u>PART NO.</u>	<u>DESCRIPTION</u>
1	1	105309	Cylinder Tube
2	1	1483	Hex Nut (Torque to 230-325 ft. lbs.)
3	1	86509	Piston
4	1	4641*	O'Ring
5	1	5421	Washer
6	1	45443*	O'Ring
7	1	45701*	Piston Ring
8	1	45699*	O'Ring
9	1	45700*	Back-Up Washer
10	1	86508	Gland
11	1	45219*	Poly-Pak Seal
12	1	7165*	Gland Retainer Rod
13	1	4974*	Rod Wiper
14	1	105307	Cylinder Rod
15	2	85772	Bushing
16	1	6615	Self-Aligning Bearing

NOTE: Seal Kit #45478 includes all parts marked with an asterisk(*). Parts are not sold separately.

MAINFRAME HOSE SET

ASSEMBLY #38462

HYDRAULIC CONTROL VALVE



10705 8-24-06

MAINFRAME HOSE SET

ASSEMBLY #38462

<u>ITEM</u>	<u>REQ'D</u>	<u>PART NO.</u>	<u>DESCRIPTION</u>
1	4	38417	Hose Assembly .25" X 39" 6FJX 90° - 6FJX
2	2	38461	Hose Assembly .25" X 30" 6FJX 90° - 6FJX
3	2	38460	Hose Assembly .25" X 18" 6FJX 45° - 6FJX
4	2	38489	Hose Assembly .50" X 16" 8FJX - 8MBo

NOTE: Letters on the hose set diagram show the hydraulic hose routing between the backhoe control valve and the various hydraulic cylinders. Simply match the letter on the control valve port to the same letter on the hydraulic hose ends. Example: Hose labeled "C" runs from the upper right Stabilizer port on the hydraulic control valve - through the swing post (hose sock) and to the rod end fitting on the right stabilizer cylinder.

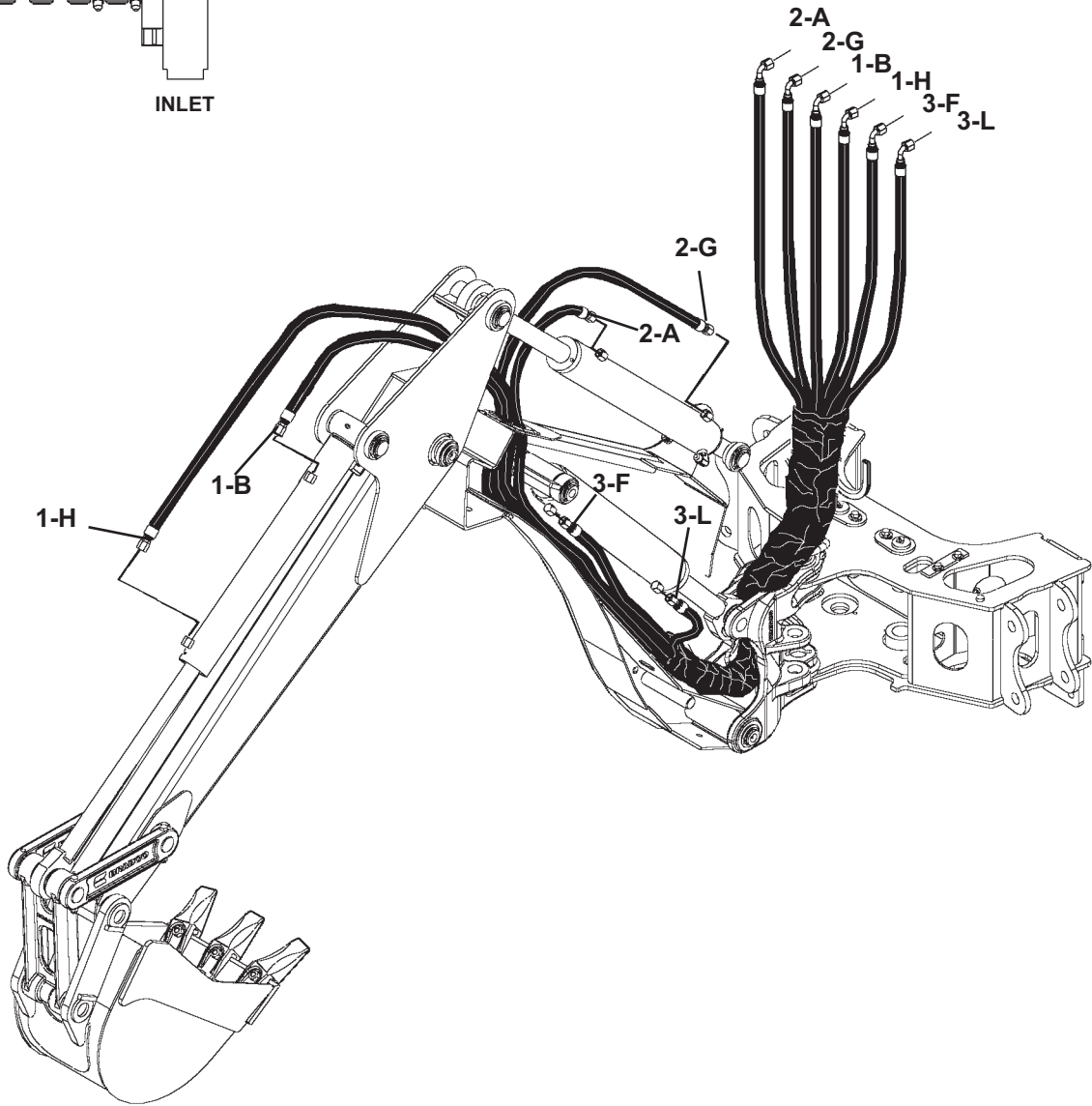
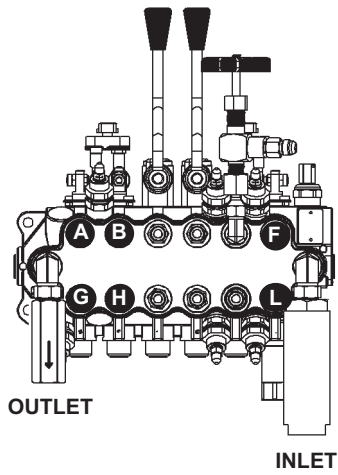
NOTE: The fittings on the hydraulic cylinders have been altered for clarity purposes. This will assist you in distinguishing between the rod end and the barrel end of the various hydraulic cylinders.

10706 8-24-06

BOOM AND DIPPER HOSE SET

ASSEMBLY #38463

HYDRAULIC CONTROL VALVE



BOOM AND DIPPER HOSE SET

ASSEMBLY #38463

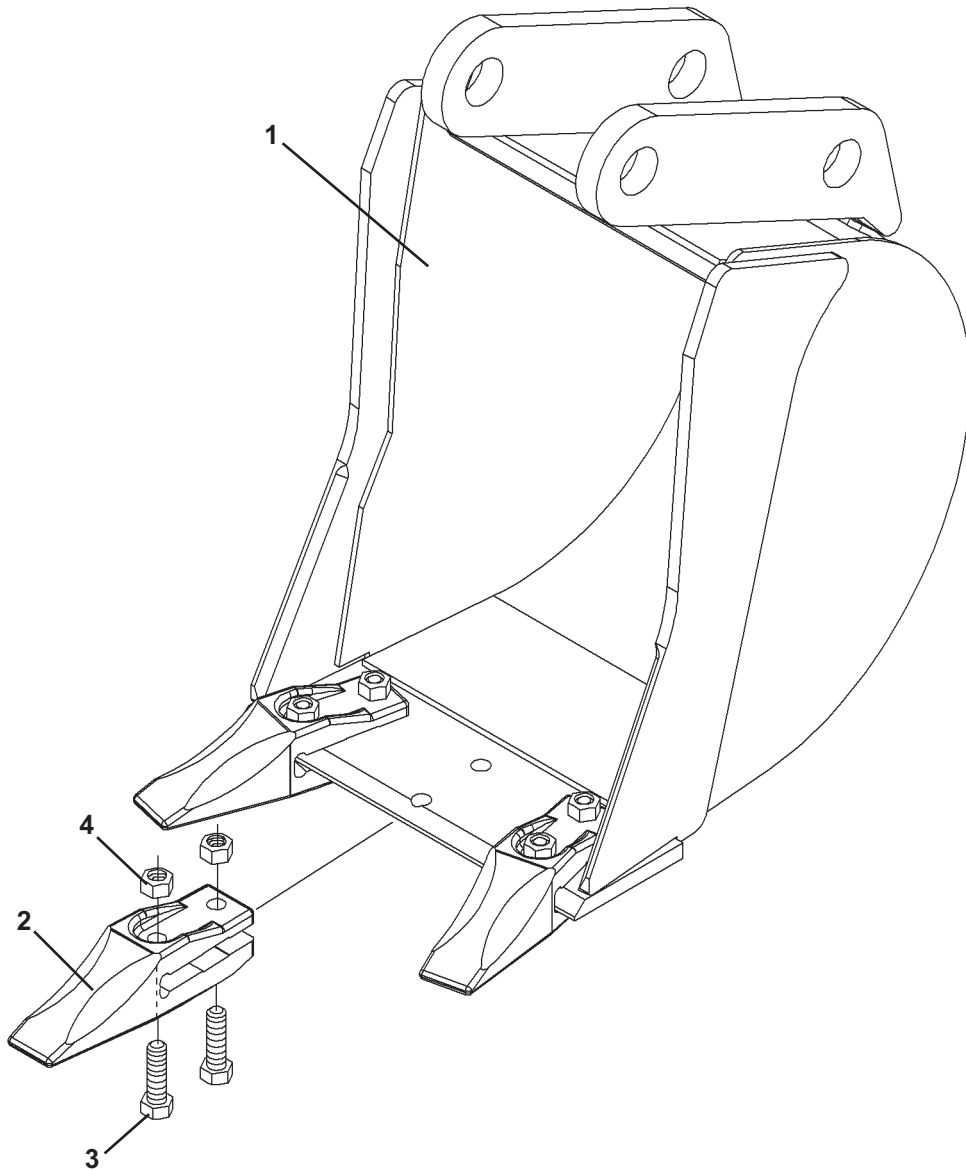
<u>ITEM</u>	<u>REQ'D</u>	<u>PART NO.</u>	<u>DESCRIPTION</u>
1	2	38458	Hose Assembly .25" X 109" 6FJX 90° - 6FJX
2	2	38457	Hose Assembly .25" X 106" 6FJX 90° - 6FJX
3	2	38476	Hose Assembly .25" X 69" 6FJX 90° - 6FJX

NOTE: Letters on the hose set diagram show the hydraulic hose routing between the backhoe control valve and the various hydraulic cylinders. Simply match the letter on the control valve port to the same letter on the hydraulic hose ends. Example: Hose labeled "L" runs from the lower Boom port on the hydraulic control valve - through the swing post (hose sock) and to the rod end fitting on the boom cylinder.

NOTE: The fittings on the hydraulic cylinders have been altered for clarity purposes. This will assist you in distinguishing between the rod end and the barrel end of the various hydraulic cylinders.

10708 8-28-06

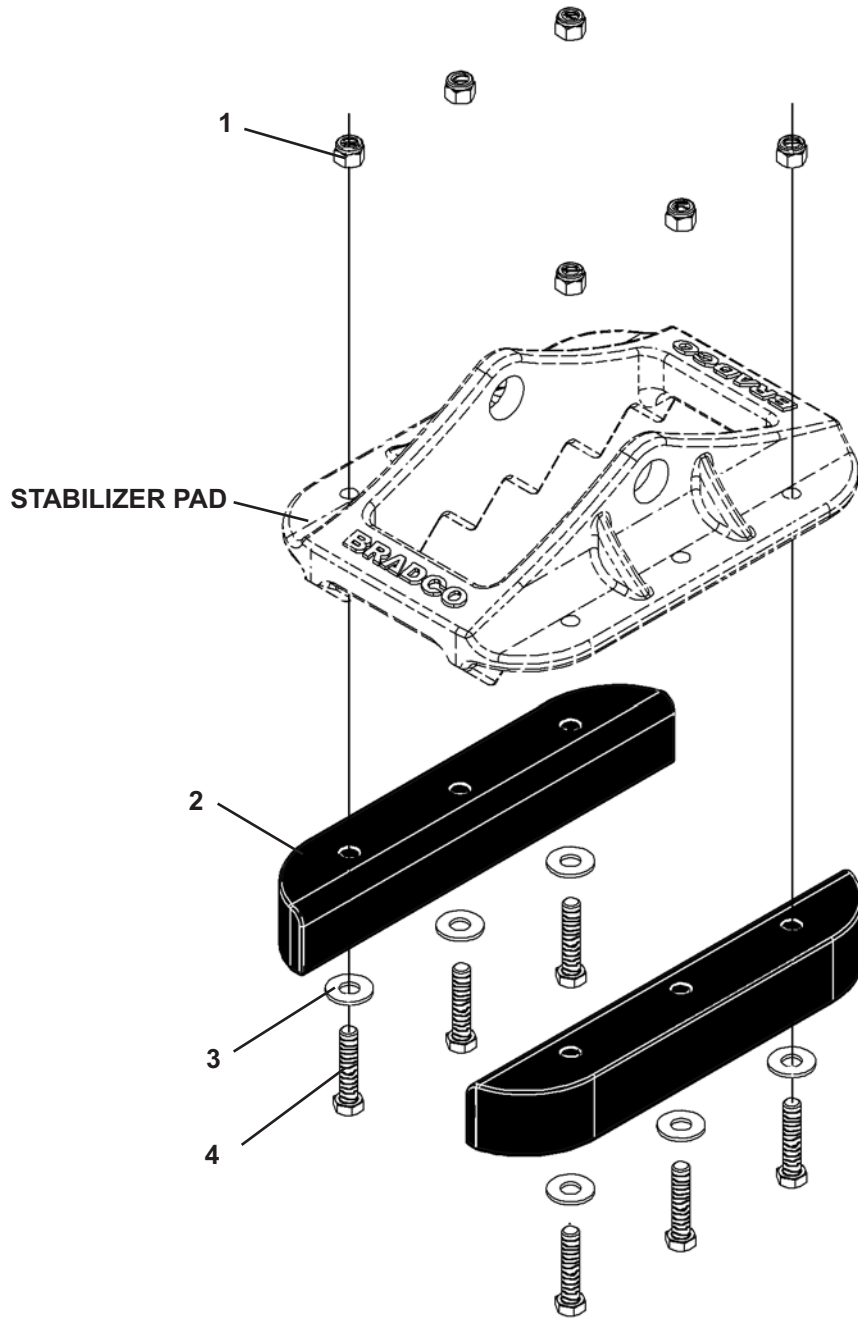
BUCKET OPTIONS



BUCKET OPTIONS

<u>ITEM</u>	<u>PART NO.</u>	<u>DESCRIPTION</u>
1	103110	10" Bucket Weldment (Requires 3 Teeth)
	103112	12" Bucket Weldment (Requires 3 Teeth)
	103116	16" Bucket Weldment (Requires 4 Teeth)
	103118	18" Bucket Weldment (Requires 4 Teeth)
	103124	24" Bucket Weldment (Requires 5 Teeth)
2	102831	Bolt-On Tooth
3	1091	.50" UNC X 1.75" Hex Capscrew
4	1841	.50" UNC Deformed Oval Lock Nut

SPABILIZER PAD OPTIONS



STABILIZER PAD OPTIONS

RUBBER PAD KIT #103676

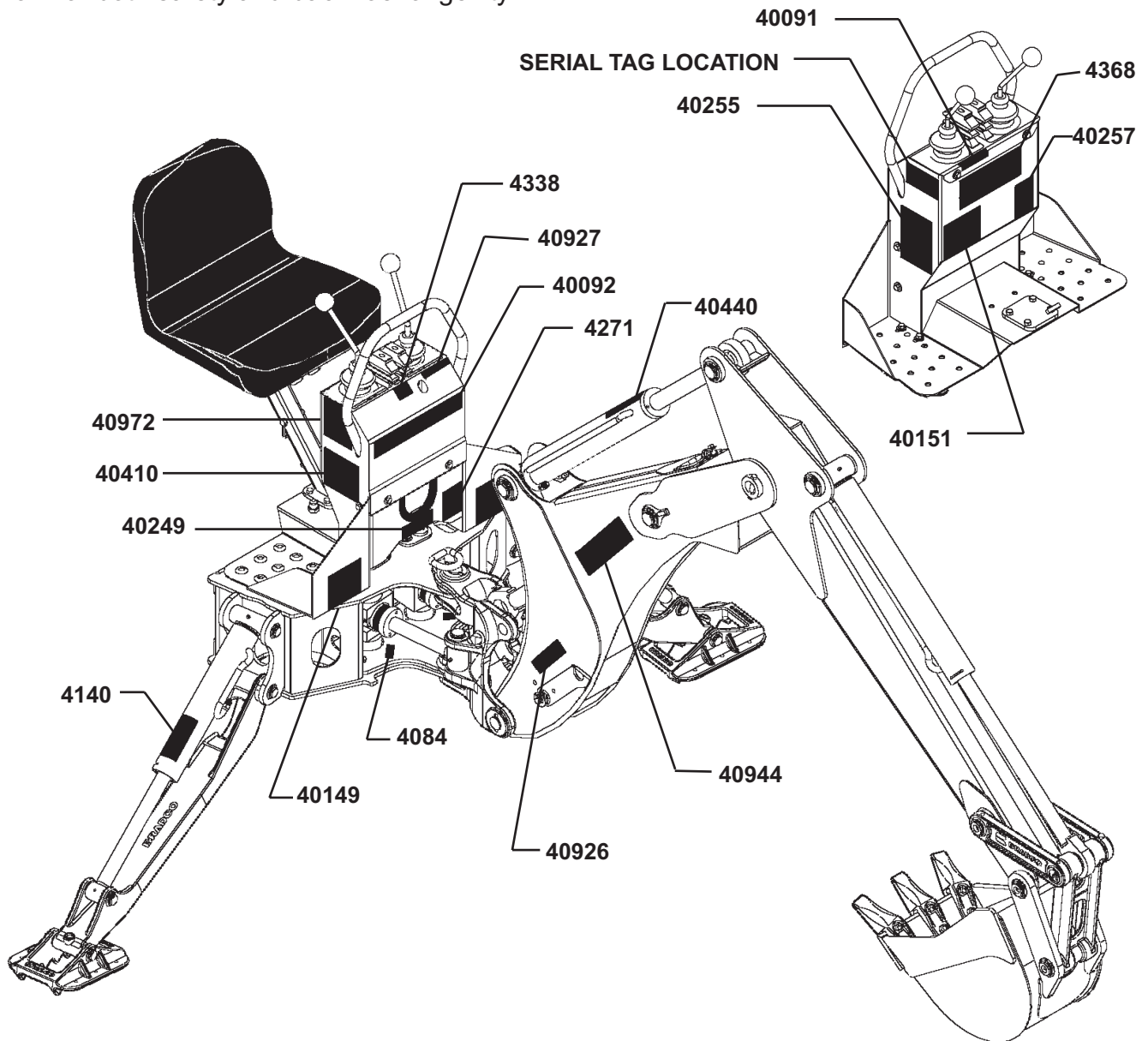
<u>ITEM</u>	<u>REQ'D</u>	<u>PART NO.</u>	<u>DESCRIPTION</u>
1	6	1536	.38" UNC Nylock Nut
2	2	102625	Rubber Pad
3	6	1514	.38" Flat Washer
4	6	1046	.38" UNC X 1.75" Hex Capscrew

DECALS

DECAL PLACEMENT

GENERAL INFORMATION

The diagrams on this page show the location of all the decals used on the 485 backhoe. The decals are identified by their part numbers, with the reductions of the actual decals located on the following pages. Use this information to order replacements for lost or damaged decals. Be sure to read all decals before operating the backhoe. They contain information you need to know for both safety and backhoe longevity.



IMPORTANT: Keep all safety decals clean and legible. Replace all missing, illegible or damaged safety decals. When replacing parts with safety decals attached, the safety decals must also be replaced.

REPLACING SAFETY DECALS: Clean the area of application with a nonflammable solvent, then wash the same area with soap and water. Allow the surface to dry. Remove the backing from the safety decal, exposing the adhesive surface. Apply the safety decal to the position shown in the diagram above, and smooth out any bubbles.

DECALS

IMPORTANT
TO PREVENT BACKHOE DAMAGE:

- DO NOT ATTACH TOW CHAIN TO DIPPER OR BUCKET.
- DO NOT REPEATEDLY SLAM SWING POST INTO SWING STOPS.

PREPARATION FOR STORAGE

LUBRICATE ALL GREASE POINTS. LEAVE AS MANY CYLINDERS IN CLOSED POSITION AS POSSIBLE. COVER ALL EXPOSED CYLINDER RODS WITH A LIGHT COAT OF GREASE. #40257

PART #40257
IMPORTANT



PART #40440
CALL BEFORE YOU DIG

WARNING

TO PREVENT SERIOUS INJURY OR DEATH:

- | Do not operate or work on this machine without reading and understanding Operator's Manual.
- | Avoid unsafe operation or maintenance.
- | Do not operate machine with guards and covers removed.
- | This machine was designed to be operated by one operator. Do not carry passengers on unit.
- | Before installing backhoe on your unit extend boom and dipperstick and lower bucket to ground.
- | Never use backhoe as manlift.
- | Operate backhoe control levers from operator's seat only. Lower stabilizers and bucket to ground before leaving operator's seat.
- | Engage boom lock and swing lock before transporting backhoe.

#40255

PART #40255
WARNING! OPERATIONAL

WARNING

HIGH-PRESSURE FLUID HAZARD

To prevent serious injury or death:

- Relieve pressure on system before repairing or adjusting or disconnecting.
- Wear proper hand and eye protection when searching for leaks. Use wood or cardboard instead of hands.
- Keep all components in good repair.

PART #40151
WARNING! HIGH PRESSURE FLUID

DANGER

To prevent serious injury or death from pinching:

- Keep all persons and objects clear while any part of this machine is in motion.

PART #40149
DANGER! PINCH POINT

CAUTION

485 BACKHOE AND 3- POINT LIMITATIONS

For Use On Category I and II Tractors:
35 - 60 Horsepower.
800 - 3800 Lbs. Rated Hitch Lift Capacity.
Up To 6000 Lbs. GVW.

Mounting This Backhoe On Larger Tractors May Result In Serious Damage To The Backhoe And Void Warranties.

Do Not Use 3-Point Quick Attaching Coupler To Mount Backhoe On Tractor.

Minimum Of 20% Of Tractor And Equipment Weight Must Be On The Tractor Front Wheels With The Backhoe In The Transport Position.

Sustained Heavy Use Of Backhoe May Result In Damage To The Tractor. #40972

PART #40972
WARNING! 3-POINT LIMITATIONS

IMPORTANT

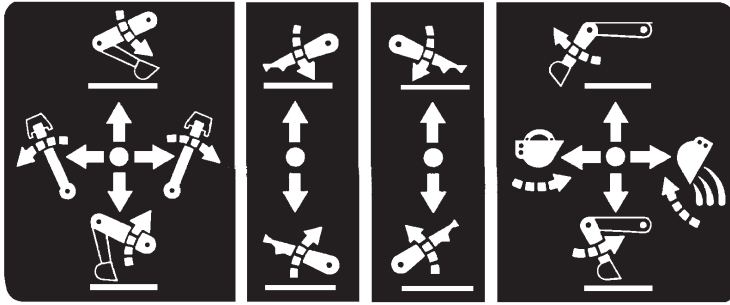
The backhoe bucket is capable of contacting this stabilizer and/or cylinder. Careful operation will avoid backhoe damage.

#4140

PART #4140
IMPORTANT

10710 8-29-06

DECALS



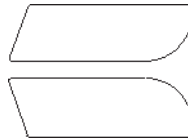
PART #4368
OPERATING CONTROLS DECAL



PART #43638
MADE IN USA



PART #4084
GREASE 8 HOURS



BRADCO

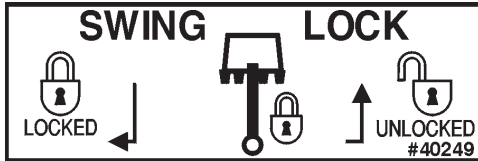
PART #40092
BRADCO LOGO



PART #40926
BOOM LOCK



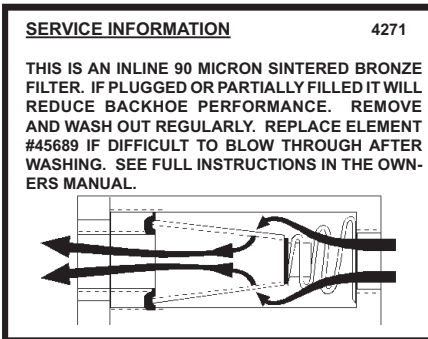
PART #40927
SWING SPEED CONTROL



PART #40249
SWING LOCK

485

PART #40944
485 MODEL NUMBER



PART #4271
INLINE FILTER



PART #40091
FLOAT

IMPORTANT NOTICE REGARDING 3-POINT HITCH BACKHOES.

BRADCO MAKES NO CLAIMS OR WARRANTY, IMPLIED OR OTHERWISE, as to the compatibility or structural integrity of any tractors 3-point hitch assembly or components when used with any BRADCO 3-point hitch type backhoe. Since many models of tractors have standard category hitches and backhoes have standard category attaching points, it is possible to mount tractor or backhoe combinations that are not compatible.

DEALERS AND/OR OWNERS MUST DETERMINE THAT COMPATIBILITY BETWEEN THE TRACTOR AND BACKHOE EXISTS.

Compatibility includes, but is not limited to items such as operator clearance, hitch component strength, tractor case strength and hydraulics.

Suggestions given as to hitch categories and horsepower ranges used with various models of backhoes are suggestions only and not recommendations as to suitability of any combination of tractors and backhoes.

BRADCO also manufactures solid 4-point mounting kits for many models of tractors. These kits do NOT mount to the 3-Point hitch. If in doubt about your hitch compatibility, solid 4-point mounting type kit and backhoe should be used.

PART #40410
IMPORTANT

10711 8-29-06