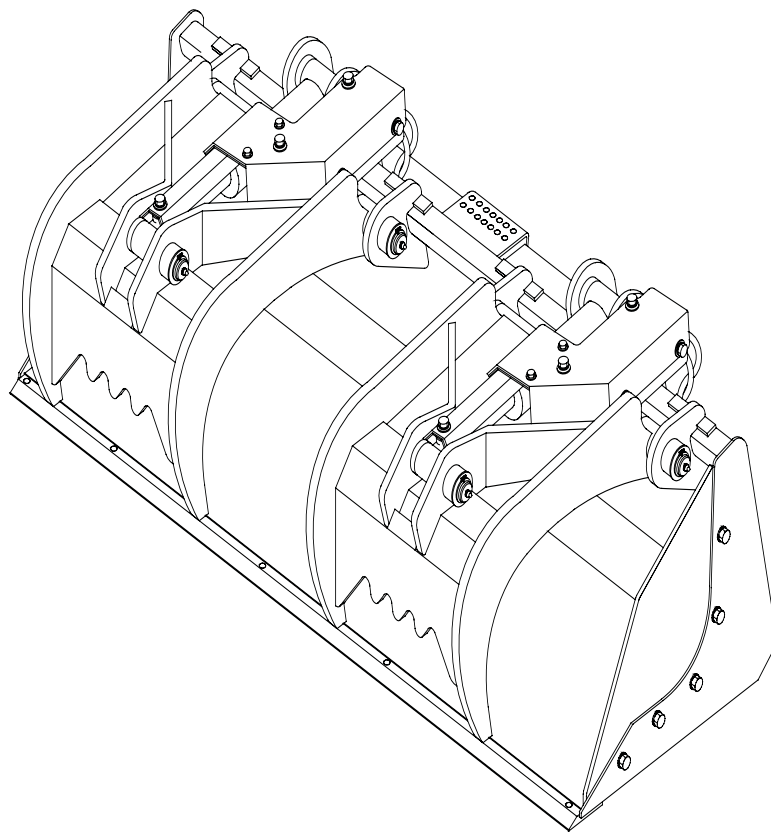




PATENTED SCRAP BUCKET



PALADIN LIGHT CONSTRUCTION



SERIAL NUMBER: _____

MODEL NUMBER: _____

Manual Number: MR35624

Models covered:

LAF5063, LAF5066, LAF5072, LAF5077;
LAF5073, LAF5078, LAF5082, LAF5087;
LAF5263, LAF5266, LAF5272, LAF5277;
LAF5273, LAF5278, LAF5282, LAF5287;
LAF5283 and LAF5294

Date: February 13, 2006

TABLE OF CONTENTS

Introduction, General Information, Serial Number.....	1
Owner and Operator Safety Information.....	2-5
Definitions of Safety Terms and Symbols, Accident Prevention.....	2
Safety Instructions.....	3-4
Safety Signs.....	5
Power Unit Specifications, Mounting.....	6
Hydraulic Connection.....	7
Operation, Maintenance.....	8
Service, Parts Illustration.....	9
Parts List.....	10-19
Supplemental.....	20
Specifications	21
Warranty	i

INTRODUCTION

Congratulations on your purchase of a new FFC Attachments **Scrap Bucket**. This product has been designed and built to pick up bulky, unusually shaped, or long materials that would not stay in an ordinary bucket. You or any other person who will be assembling, operating, maintaining, or working with this product are required to read and completely understand the information and instructions contained in this manual. If anyone does not fully understand every part of this manual, please obtain further assistance by contacting the dealer from which this product was purchased or by contacting FFC Attachments at the telephone number or address listed on the cover of this manual. Keep this manual available for reference whenever this product is being handled or used. Provide this manual to any new owners and/or operators.

This manual covers model(s)) **LAF5063, LAF5066, LAF5072, and LAF5077: (Standard Duty Utility Grade); LAF5073, LAF5078, LAF5082, and LAF5087: (Standard Duty Construction Grade); LAF5263, LAF5266, LAF5272, and LAF5277: (Heavy Duty Utility Grade);, LAF5273, LAF5278, LAF5282, and LAF5287: (Heavy Duty Construction Grade); and LAF5283 and LAF5294: (Extra Heavy Duty Construction Grade)**. The difference between the models is the width and design of the product, details of which are covered on the parts list and specifications page(s).

GENERAL INFORMATION

The purpose of this manual is to assist in assembling, mounting, operating, and maintaining your **Scrap Bucket**. Read this manual carefully to obtain valuable information and instructions that will help you achieve years of safe and dependable service.

The illustrations and data used in this manual were current at the time of printing, but due to possible engineering and/or production changes, this product may vary slightly in detail. FFC Attachments reserves the right to redesign and/or change components as may be necessary without notification to anyone.

Throughout this manual, references may be made to:

Power Unit	The engine driven machine to which this product must be attached.
Left, Right, Front, Rear	Directions that are determined in relation to the operator of the equipment when seated in the normal operating position.
IMPORTANT	Precautions that must be followed to prevent damage to equipment.
NOTICE	Precautions that must be followed to prevent substandard performance.


SERIAL NUMBER LOCATION

Always refer to the model and serial number when ordering parts or requesting information from your dealer. The serial number plate for this product is located **on the upper left portion of the bucket** of your **Scrap Bucket**.

Reference Information	
Model Number	Loader Make
Serial Number	Loader Model
Date Purchased	Loader Serial #

DEFINITION OF SAFETY TERMS AND SYMBOLS

Throughout this manual, the terms **DANGER**, **WARNING**, and **CAUTION** are used to indicate the degree of hazard to personnel if proper safety procedures are not followed. These words will be used in conjunction with the Safety Alert Symbol: a dark triangle containing a white exclamation mark.

	The Safety Alert Symbol means: ATTENTION! BECOME ALERT! YOUR SAFETY IS INVOLVED!
DANGER	Indicates an imminently hazardous situation which, if not avoided, WILL result in death or serious injury.
WARNING	Indicates a potentially hazardous situation which, if not avoided, could result in death or serious injury.
CAUTION	Indicates a potentially hazardous situation which, if not avoided, may result in minor or moderate injury OR may also be used to alert against unsafe practices that may result in personal injury

ACCIDENTS CAN BE PREVENTED WITH **YOUR HELP !**

No accident prevention program can be successful without the wholehearted cooperation of the person who is directly responsible for the operation of the equipment.

To read equipment accident reports from all over the country is to be convinced that a large number of accidents can be prevented only by operators who consistently anticipate the results of their actions and thus prevent accidents from ever occurring. No power-driven equipment, whether it is on the highway, in a farm field, or in an industrial plant, can be any safer than is allowed by the person who is at the controls.

If accidents are to be prevented (and accidents can be prevented), that prevention will come from equipment operators who accept their complete responsibility.

The designer, the manufacturer, and the safety engineer all help create a safe product, but the operator of that product can wipe out their combined efforts with a single careless act.

The best safety device is a careful operator. FFC Attachments and your dealer ask that **YOU** be that careful, responsible equipment operator.

YOU ARE THE KEY TO SAFETY BECAUSE:

YOU are responsible for the SAFE operation and maintenance of **YOUR Scrap Bucket.**

YOU are responsible to familiarize yourself, and anyone else who will assemble, operate, maintain, or work around this product, with the SAFETY information contained in this manual.

YOU are responsible to read ALL information contained in this manual to any operators or maintenance personnel who are not fully able to read the written English language. Whether **YOU** read the manual as written or translate it into another language, **YOU** must make certain that all operators and maintenance personnel have a complete understanding of the full and exact contents of this manual. Translations of this manual into other languages are available by submitting a written request to FFC Attachments.

YOU can reduce the risk of injury or death by following all safety precautions and by using good safety practices.

SAFETY INSTRUCTIONS

WORK SAFELY - A CAREFUL OPERATOR IS THE BEST INSURANCE AGAINST ACCIDENTS !!

WARNING SECTION



WARNING

Obey all the safety instructions listed in this section and throughout this manual. Failure to obey instructions in this section could result in death or serious injury.

- Use properly grounded electrical outlets & tools.
- Use the right tool for the job at hand.
- Make sure that your tools are in good condition for performing the desired function.
- When using tools, wear the protective equipment specified by the tool manufacturer. (i.e. hardhat, safety glasses, work gloves, protective shoes, etc.)

BEFORE ATTEMPTING ANY TYPE OF ASSEMBLY, OPERATION, MAINTENANCE, OR OTHER WORK ON OR NEAR THIS PRODUCT:

- **READ AND COMPLETELY UNDERSTAND THIS MANUAL.**
- **READ AND COMPLETELY UNDERSTAND THE MANUALS PROVIDED WITH YOUR *power unit, loader, and quick-attach.***
- Read and understand all safety signs on this product and on your power unit, loader, and quick-attach.
- Know all your controls and know how to quickly stop all power unit movement, the Scrap Bucket movement, and the engine in case of an emergency.
- Know and obey all applicable government rules, O.S.H.A. regulations, local laws and other professional guidelines for your operation.
- Make sure that anyone who will be assembling, mounting, maintaining, repairing, removing, and/or storing this product:
 - has been instructed in the safe operation of this product and of the power unit, loader, and quick-attach to which this product is attached.
 - is physically and mentally capable of the safe operation of this type of equipment.
 - is not under the influence of drugs or alcohol.
 - is carefully supervised from a safe distance, especially if such person is inexperienced.
 - wears appropriate protective equipment (i.e. hardhat, safety glasses, work gloves, protective shoes, respirator, ear protection, etc.).
 - does not wear loose fitting clothing, loose or uncovered hair, or any accessories (jewelry, necktie, scarf, wrist watch, etc.) that can catch in moving parts.
 - has annually reviewed all safety instructions.
- Know and follow good work practices when assembling, mounting, maintaining, repairing, removing, and storing this product:
 - Work on a level surface in a well-lit area.
 - Keep the area clean and dry.

WHEN YOUR POWER UNIT IS USED DURING ANY TYPE OF ASSEMBLY, OPERATION, MAINTENANCE, OR OTHER WORK ON OR NEAR THIS PRODUCT:

- Before leaving the operator's station or before beginning any type of work on this product, lower this product to the ground, apply your power unit's parking brake, stop the engine, remove the starter key, wait for all moving parts to stop, and then relieve all pressure in the hydraulic lines. Refer to your power unit's operator's manual for instructions on how to relieve hydraulic pressure in lines.
- Know your loader's safe lifting and operating capacity and the weight of this product. See the specifications in this manual for the weight of this product and refer to your power unit's and your loader's operator's manuals for safe operating limits. Lift capacity may be reduced if using a quick-attach.
- Never allow anyone, except the operator, to be around the power unit or this product when either is in motion. Do not startup unless others are clear of the work area.
- Do not allow riders on this product or the power unit.
- Do not stand or climb on this product when raised.
- Do not place any part of your body under any part of this product unless this product is securely resting on adequate blocking or on the ground.
- Do not use blocking made of concrete blocks, logs, buckets, barrels or any other material that could suddenly collapse or shift positions. Do not use wood or steel blocking that shows any signs of material decay. Do not use blocking that is warped, twisted, or tapered.
- Never operate controls from the ground. Operate the controls only from the operator's station.
- Never leave equipment unattended with the engine running or with this product raised on the loader.
- Be aware of the added weight and width of this product. Reduce travel speeds accordingly, especially when traveling over rough ground.
- Keep this product close to the ground and under control when transporting.

SAFETY INSTRUCTIONS

WORK SAFELY - A CAREFUL OPERATOR IS THE BEST INSURANCE AGAINST ACCIDENTS !!

WARNING SECTION (CONTINUED)



WARNING

Obey all the safety instructions listed in this section and throughout this manual. Failure to obey instructions in this section could result in death or serious injury.

WHEN DEALING WITH HYDRAULICS DURING ANY TYPE OF ASSEMBLY, OPERATION, MAINTENANCE, OR OTHER WORK ON OR NEAR THIS PRODUCT:

- Hydraulic fluid under pressure can penetrate the skin and cause serious injury or death. Hydraulic leaks under pressure may not be visible!
- If any fluid penetrates the skin, GET IMMEDIATE MEDICAL ATTENTION!!
- Wear safety glasses, protective clothing, and use a sound piece of cardboard or wood when searching for hydraulic leaks. DO NOT USE YOUR HANDS!
- Before connecting or disconnecting hydraulic hoses, read your power unit's operator's manual for detailed instructions on connecting and disconnecting hydraulic attachments.
- Make certain that all parts meet the specifications for this product when installing or replacing hydraulic hoses or fittings.
- After connecting hydraulic lines:
 - Slowly and carefully raise the loader and cycle the rollback / dump cylinders to check hose clearances and to check for any interference.
 - Operate the hydraulics on this product to check hose clearances and to check for any interference.
 - Make certain that the hoses cannot interfere with or actuate the quick-attach mechanism.
 - Make certain that hoses will not be pinched, or get tangled, in any equipment.
- Refer to your power unit's operator's manual and this manual for procedures and intervals, then inspect and maintain the entire hydraulic system to insure that the fluid remains clean, that all devices function properly, and that there are no fluid leaks.

WHEN MOUNTING THIS PRODUCT TO YOUR POWER UNIT:

- Refer to the operator's manuals of your power unit, your loader, and your quick-attach for special or detailed mounting instructions.
- This product should fit onto the quick-attach or loader arms of your power unit the same as the original products that were designed by your loader / quick-attach manufacturer.
- If this product does not fit properly, contact FFC Attachments before operating.
- Never place your finger into the mounting plate or loader holes. A slight movement of the power unit or this product could cause serious injury.

BEFORE EACH USE, THOROUGHLY INSPECT THIS PRODUCT AND:

- Make certain that all safety signs are in place and legible. Refer to the safety sign page in this manual for the placement of safety signs for this product.
- Replace all damaged or excessively worn parts and hardware only with genuine FFC Attachments parts or with properly rated fasteners, hydraulic hoses, or fittings.
- Make certain that all locking pins, latches, and connection devices are properly installed and secured.
- Make certain that all protective guards, canopies, doors, etc. are in place and secure.

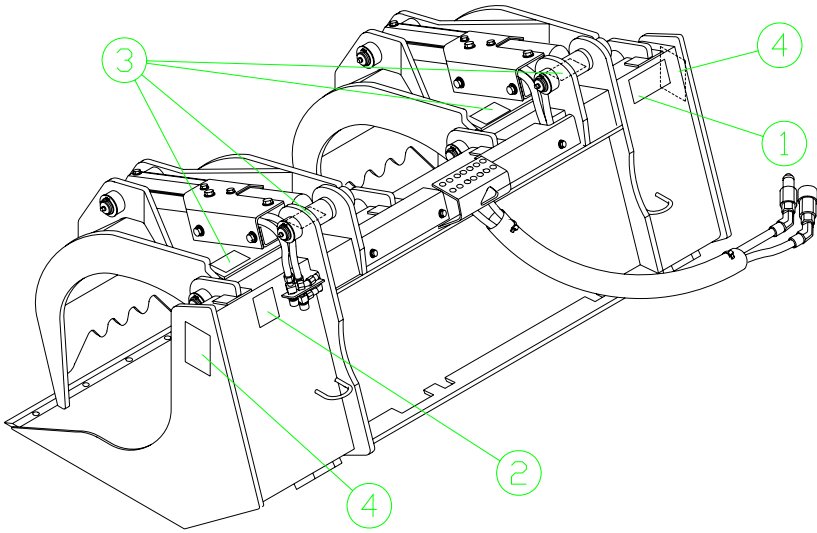
WHEN OPERATING THIS PRODUCT IN ACCORDANCE WITH DESIGN INTENTIONS:

- THE GRAPPLE MOVES QUICKLY! Do not allow anyone near the grapple.
- Never get between the grapple and the bucket.
- Do not lift any load that is taller than the height of the fully opened grapple.
- Do not roll back this product so far that the load falls toward the operator.

WHEN ADJUSTING, SERVICING OR REPAIRING THIS PRODUCT:

- Make no modifications to your Scrap Bucket.
- When making repairs, use only genuine FFC Attachments parts or, for fasteners, hydraulic hoses, or hydraulic fittings, use only properly rated parts.
- Replacement parts, for parts with safety signs attached, must also have safety signs attached.

SAFETY SIGN LOCATIONS



ITEM	QTY.	PART# - DESCRIPTION
1	1	RDL3141 – Read Manual
2	1	RDL3129 – Hydraulics
3	4	RDL3127 – Pinch Point
4	2	RDL3125 - Grapple

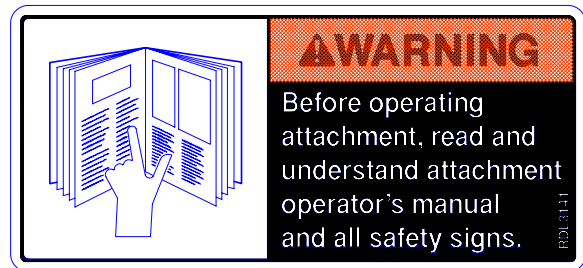
INSTRUCTIONS

- Keep all safety signs clean and legible.
- Replace all missing, illegible, or damaged safety signs.
- Replacement parts for parts with safety signs attached must also have safety signs attached.
- Safety signs are available, free of charge, from your dealer or from FFC Attachments.

PLACEMENT OR REPLACEMENT OF SAFETY SIGNS

1. Clean the area of application with non-flammable solvent, and then wash the same area with soap and water.
2. Allow the surface to fully dry.
3. Remove the backing from the safety sign, exposing the adhesive surface.
4. Apply the safety sign to the position shown in the diagram above and smooth out any bubbles.

ITEM 1



ITEM 2



ITEM 3



ITEM 4



POWER UNIT SPECIFICATIONS

IMPORTANT

Exceeding any of the recommended power unit specifications
CAN result in damage to this product and
WILL void all FFC Attachments warranties

DESCRIPTION	SPECIFICATIONS		
	LAF5063, LAF5066, LAF5072, LAF5077, LAF5263, LAF5266, LAF5272, LAF5277	LAF5073, LAF5078, LAF5082, LAF5087, LAF5273, LAF5278, LAF5282, LAF5287	LAF5283, LAF5294
Weight of Power Unit without Scrap Bucket	8,000 lbs. maximum	11,000 lbs. maximum	32,000 lbs. maximum
Operating Capacity of Power Unit's loader	2,500 lbs. maximum	3,750 lbs. maximum	5,000 lbs. maximum
Lift capacity of Power Unit's loader or Static Tip Load Straight	5,000 lbs. maximum	7,500 lbs. maximum	10,000 lbs. maximum
Hydraulic Pressure Output	4,000 psi. maximum	4,000 psi. maximum	4,000 psi. maximum
Rear Ballast	As required to maintain full power unit stability. (note the Shipping Weight on page 16, the see the operators manual(s) for your power unit, loader, and quick-attach for ballasting needs.)		

SCRAP BUCKET MOUNTING



SAFETY FIRST!! READ AND UNDERSTAND THE SAFETY INSTRUCTIONS (pages 2-5 of this manual) BEFORE BEGINNING ANY SCRAP BUCKET MOUNTING

1. Place this product on a firm, level surface that is large enough to safely accommodate this product, your power unit and all workers involved in the mounting process.
2. Refer to the operator's manual(s) for your power unit, loader, and quick-attach and follow the mounting instructions contained therein.
3. Carefully raise the loader and cycle the tilt cylinders to check clearances and to verify that all mounting procedures have been successfully completed.

IMPORTANT

Lubricate all grease fittings before connecting this product to your power unit's hydraulic system. Refer to SCRAP BUCKET MAINTENANCE and follow the instructions.

SCRAP BUCKET HYDRAULIC CONNECTION



SAFETY FIRST!! READ AND UNDERSTAND THE SAFETY INSTRUCTIONS (pages 2-5 of this manual) BEFORE BEGINNING ANY SCRAP BUCKET HYDRAULIC CONNECTION

1. You must purchase and install two hydraulic hoses that have fittings permanently attached to each end. These hoses and fittings must meet the following specifications: (NOTE: If your Scrap Bucket was supplied with hoses, skip to step 4.)
 - Inside Diameter:..... 0.375" (3/8")
 - Minimum Operating Pressure:..... 4,000 psi.
 - Hose End Fittings:..... One hose end must be a #6 female JIC fitting. The fitting for the other end can be whatever you determine to be the most beneficial to making the connection to your power unit.
 - Length:..... You must make this determination based upon recommendations provided in your power unit's operator's manual. The hoses must be long enough to avoid applying any tension to them (i.e. stretching) in all operating positions of this product. The hoses must not be excessively long either, because this could cause the hoses to drag on the ground, be pinched in the equipment, become entangled in moving parts, etc., any of which will shorten the life of the hose and could cause injury to the operator or others near the equipment.
2. Remove all the protective plastic caps from the hose ends and this product's connection fittings.
3. Make certain that the male and female threads, as well as the inside of the hoses, are clean, then place the #6 hose ends on/in to the fittings on this product and tighten to 21 ft. lbs., + or - 1.0 ft. lbs. (#6 is 9/16" dia. with 18 tpi.)
4. Make the connection to your power unit using the appropriate method below for your power unit:
 - If your power unit has male or female threads for connecting the hydraulic hoses to the auxiliary hydraulic lines, make certain that the threads, as well as the inside of the fittings and hoses, are clean, then secure the hoses to the fittings using the torque specified in your power unit's operator's manual.
 - If your power unit has quick-couplers for connecting the hydraulic hoses to the auxiliary hydraulic lines, you may need to purchase the proper quick-coupler fittings that you must install on the free ends of the two hoses. In most cases, the owner's manual for your power unit will describe the exact type of fitting that is needed for your hydraulic coupling system, but in no case should any fitting have an allowable operating pressure of less than 4,000 psi. Once all the quick-coupler fittings are properly installed, then the hoses can be coupled to the power unit's hydraulic valve body or auxiliary hydraulic lines as per the instructions found in your power unit's operator's manual.
5. Carefully raise the loader and cycle the tilt cylinders to check hose clearances and to check for any interference. Operate the hydraulic cylinder(s) on this product to make the same checks.
6. Cycle the hydraulic cylinder(s) on this product several times from fully retracted to fully extended until all air has been completely removed from the cylinder(s).

NOTICE When shipped, the hydraulic cylinder(s) on this product contained air or an air-fluid mixture. Also, there are orifices beneath the port(s) in the hydraulic cylinder barrel(s) that will restrict the exit of that air. Failure to remove all the air from the hydraulic cylinder(s) can cause uneven, jerky cylinder movement when the hydraulic controls are being operated and unwanted cylinder movement when those controls are not being operated.

SCRAP BUCKET OPERATION



SAFETY FIRST!! READ AND UNDERSTAND THE SAFETY INSTRUCTIONS (pages 2-5 of this manual) BEFORE BEGINNING ANY SCRAP BUCKET OPERATION



WARNING

Failure to obey the following procedures could result in death or serious injury

- **THE GRAPPLE MOVES QUICKLY! Do not allow anyone near the grapple.**
- **Never get between the grapple and the bucket.**
- **Do not lift any load that is taller than the height of the fully opened grapple.**
- **Do not roll back this product so far that the load falls toward the operator.**

POSITIONING THE LOAD

1. Approach the load so that the weight will be centered on the floor of the bucket. If the load has a heavy side, then that side should be closest to the rear of the bucket rather than near the bucket edge.
If the grapple is ever used as a rake to drag materials into a position for being picked up, **the grapple must be completely open**. Applying a raking-type force to the partially open grapple will greatly magnify the fluid pressure in the hydraulic hoses, fittings, and cylinders and may cause those components to fail.

IMPORTANT

Using the partially open grapple as a rake

**CAN result in damage to this product and
WILL void all FFC Attachments warranties**

2. Make certain that the bucket is completely under the load and make certain that the bucket floor is level.
3. Close the grapple to the fullest extent possible.
4. Lift the load slightly and make sure that the load is secure. If the load appears to be unstable, lower the load, open the grapple, reposition the load to attain full stability, and repeat steps 2 through 4 until full stability is achieved.

TRANSPORTING THE LOAD

1. Raise the load to the **minimum** height required for the terrain that must be crossed with the load.
2. Operate the power unit so that:
 - the load always remains level,
 - accelerating, turning, and breaking are done very gradually, and
 - any obstacles, bumps, or holes in the intended path are avoided.
3. Frequently check the load to make sure that the load has not become unstable.

SCRAP BUCKET MAINTENANCE



SAFETY FIRST!! READ AND UNDERSTAND THE SAFETY INSTRUCTIONS (pages 2-5 of this manual) BEFORE BEGINNING ANY SCRAP BUCKET MAINTENANCE

BEFORE EACH USE

- Make sure all nuts and bolts are in place and properly tightened.
- Make sure all other fasteners are in place and performing their specified functions.
- Make sure all hydraulic fittings are tightened to specifications and that there are no leaks in any fittings or hoses. (SEE THE HYDRAULIC CONNECTION SECTION).
- Make sure all safety signs are in place, are clean, and are legible. (SEE SAFETY SIGN SECTION).
- Replace any damaged and excessively worn parts.

AFTER EVERY 10 HOURS OF USE

- Grease (8) fittings: one on the end of each hydraulic cylinder pin and one on each end of each grapple pin.

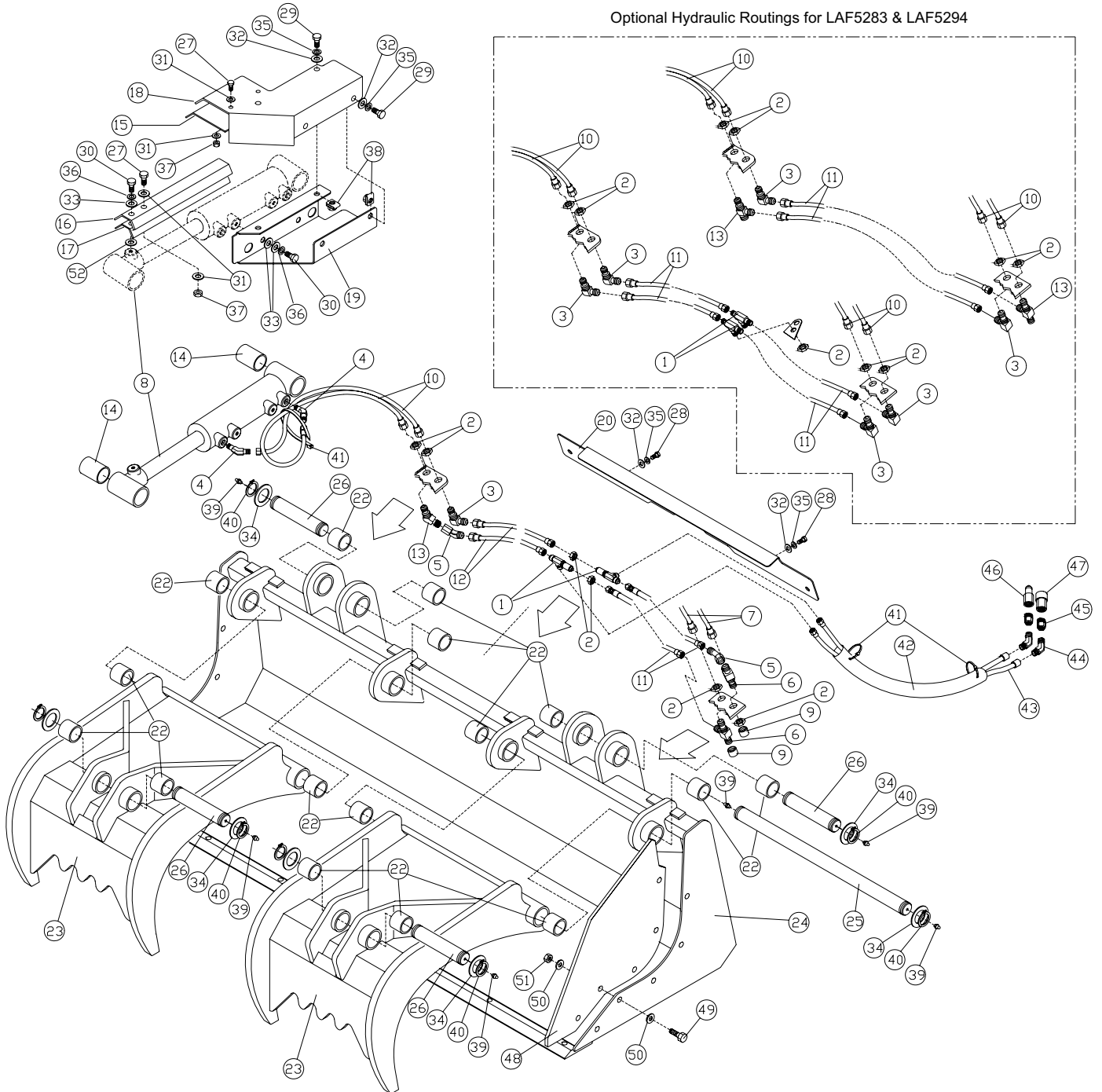
SCRAP BUCKET SERVICE



SAFETY FIRST!! READ AND UNDERSTAND THE SAFETY INSTRUCTIONS (pages 2-5 of this manual) BEFORE BEGINNING ANY SCRAP BUCKET SERVICE

- If a grapple pivot pin or a cylinder pin ever needs to be replaced, completely remove and replace one pin before starting on any other pin.

PARTS ILLUSTRATION



SCRAP BUCKET PARTS LIST

ITEM	QTY.	LAF5063 63"	LAF5066 66"	LAF5072 72"	LAF5077 77"	DESCRIPTION
						Hydraulic Fitting and components:
1	2				LAF4275	Bulkhead Run Tee: (3) 6MJ Fittings
2	6				LAF4098	Bulkhead Jam Nut: 5/16", 18 tpi.
3	1				LAF4157	Bulkhead Elbow: 90°, 6MJ-6MJ
4	4				LAF4246	Hydraulic Elbow: 45°, 6MB-6MJ
5	2				LAF4261	Hydraulic Elbow: 45°, 6MJ-6FJX
6	2				LAF4275	Bulkhead Run Tee: (3) 6MJ Fittings
7	2				LAF4302	Hydraulic Hose: ¼" x 19", 6FJ-6FJ
8	2				LAF4796	Hydraulic Cylinder
9	2				LAF4483	Cap: 6FJ
10	2				LAF4485	Hydraulic Hose: ¼" x 17-1/4", 6FJ-6FJ
11	2				LAF4486	Hydraulic Hose: ¼" x 23-1/2", 6FJ-6FJ
12	2				03-10019	Hydraulic Hose: ¼" x 13-1/4", 6FJ-6FJ
13	1				LAF4504	Hydraulic Fitting: 45° Bulkhead Elbow, 6MJ-6MJ
20	1				13-50012	Hose Guard (varies by model)
22	16				LAF9544	Spring Bushing: 1-1/4" ID-1-1/2"OD x 1-1/2"
23	2	Contact FFC to obtain the correct item.				Grapple
24	1	LAF9519	LAF9520	LAF9545	LAF9518	Bucket
25	2				LAF9387	Grapple Pivot Pin
26	4				LAF9388	Cylinder Pin
28	4				RHW1205	Grade 5 Hex Head Cap Screw: 3/8" x 1"
32	4				RHW5262	Grade 5 Flat Washer: 3/8", USS
34	12				RHW5972	Machinery Bushing: 1¼" ID x1-7/8" OD, 1/8" thick
35	4				RHW6202	Grade 5 Lock Washer: 3/8"
39	8				RHW8090	Grease Zerk: ¼", 28 tpi, Self-Tapping
40	12				RHW8167	Retaining Ring: 1-¼" ID
41	4				RMR5002	Nylon Cable Ties: ¼" x 11"
42	1	Contact FFC to obtain the correct item.				Hydraulic Hose Protector: 1-7/8"
43	2	Contact FFC to obtain the correct item.				Hydraulic Hose
44	2	Contact FFC to obtain the correct item.				Hydraulic Elbow (Not required for all models)
45	2	Contact FFC to obtain the correct item.				Hydraulic Adapter (Not required for all models)
46	1	Contact FFC to obtain the correct item.				Hydraulic Coupler: Male Connection
47	1	Contact FFC to obtain the correct item.				Hydraulic Coupler: Female Connection
						OPTIONAL ENDPLATE EXTENSION KIT (LAF5251)
48	2				LAF9516	Endplate Extension Plate
49	8				RHW1405	Grade 5 Hex Head Cap Screw: ½" x 1½"
50	16				RHW5462	Grade 5 Flat Washer: ½", USS
51	8				RHW7403	Grade 5 Lock Nut: ½", 13 tpi

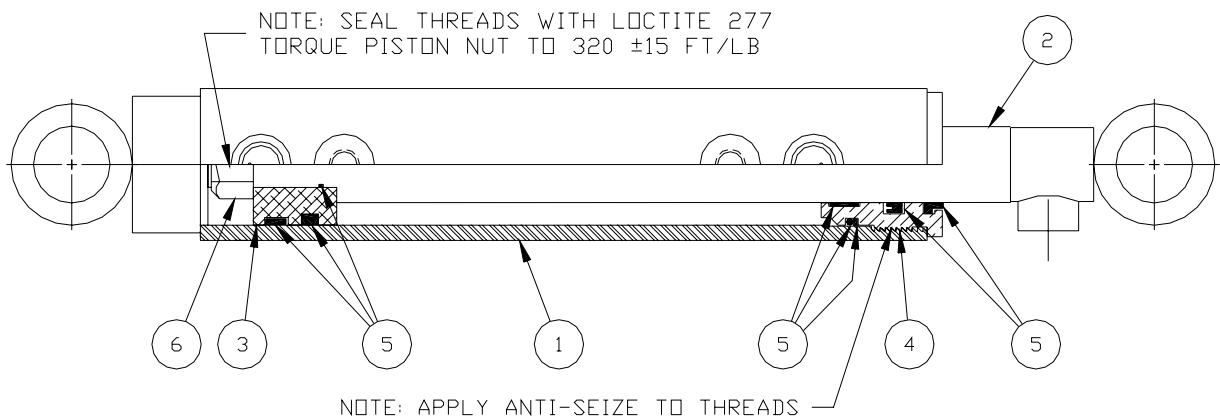
NOTE: All parts are the same as the LAF5077 except for those parts numbered under the other models.

SCRAP BUCKET PARTS LIST (Continued)

ITEM	QTY.	LAF5063 63"	LAF5066 66"	LAF5072 72"	LAF5077 77"	DESCRIPTION
						OPTIONAL 110 GRAPPLE HOSE/CYLINDER GUARD KIT (10050)
15	2				LAF9533	Cylinder Cover Top Liner
16	2				LAF9532	Cylinder Guard
17	2				LAF9531	Cylinder Guard Liner
18	2				LAF9530	Cylinder Guard Top (varies by model)
19	2				LAF9529	Cylinder Guard Bottom (varies by model)
27	6				RHW1004	Grade 5 Hex Head Cap Screw: 1/4" x 3/4"
29	8				RHW1207	Grade 5 Hex Head Cap Screw: 3/8" x 1-1/4"
30	6				RHW1403	Grade 5 Hex Head Cap Screw: 1/2" x 1"
31	12				RHW5062	Grade 5 Flat Washer: 1/4", USS
32	8				RHW5262	Grade 5 Flat Washer: 3/8", USS
33	10				RHW5462	Grade 5 Flat Washer: 1/2", USS
35	8				RHW6202	Grade 5 Lock Washer: 3/8"
36	6				RHW6402	Grade 5 Lock Washer: 1/2"
37	6				RHW7003	Grade 5 Lock Nut: 1/4", 20 tpi
38	8				RHW7210	Clip Nut: 3/8", 16 tpi
						NUMBERS FROM HYDRAULIC CYLINDER ILLUSTRATION (LAF4796 below.)
1	1				LAF4801	Barrel: 2" I.D. x 8" Stroke With Parallel Cross Tube End
2	1				LAF4800	Shaft: 1 1/4" Dia. With Cross Tube End
3	1				LAF4618	Piston: 2" OD
4	1				LAF4619	Head: 2" O.D, Nominal
5	1				LAF4617	Seal Kit (Includes All Seals, O-Rings, Etc.)
6	1				LAF4802	Nut 0600

NOTE: All parts are the same as the LAF5077 except for those parts numbered under the other models.

HYDRAULIC CYLINDER ILLUSTRATION (LAF4796)



SCRAP BUCKET PARTS LIST

ITEM	QTY.	LAF5073 73"	LAF5078 78"	LAF5082 82"	LAF5087 87"	DESCRIPTION
						Hydraulic Fitting and components:
1	2				LAF4275	Bulkhead Run Tee: (3) 6MJ Fittings
2	6				LAF4098	Bulkhead Jam Nut: 5/16", 18 tpi.
3	1				LAF4157	Bulkhead Elbow: 90°, 6MJ-6MJ
4	4				LAF4246	Hydraulic Elbow: 45°, 6MB-6MJ
5	2				LAF4261	Hydraulic Elbow: 45°, 6MJ-6FJX
6	2				LAF4275	Bulkhead Run Tee: (3) 6MJ Fittings
7	2				LAF4302	Hydraulic Hose: ¼" x 19", 6FJ-6FJ
8	2				LAF4797	Hydraulic Cylinder
9	2				LAF4483	Cap: 6FJ
10	2				LAF4302	Hydraulic Hose: ¼" x 19", 6FJ-6FJ
11	2				LAF4486	Hydraulic Hose: ¼" x 23-1/2", 6FJ-6FJ
12	2				03-10019	Hydraulic Hose: ¼" x 13-1/4", 6FJ-6FJ
13	1				LAF4504	Hydraulic Fitting: 45° Bulkhead Elbow, 6MJ-6MJ
20	1				13-50012	Hose Guard (varies by model)
22	16				LAF9602	Spring Bushing: 1-3/4" ID-1-1/2"OD x 2"
23	2				LAF9603	Grapple
24	1	LAF9604	LAF9562	LAF9589	LAF9561	Bucket
25	2				LAF9384	Grapple Pivot Pin
26	4				LAF9385	Cylinder Pin
28	4				RHW1205	Grade 5 Hex Head Cap Screw: 3/8" x 1"
32	4				RHW5262	Grade 5 Flat Washer: 3/8", USS
34	12				RHW5970	Machinery Bushing: 11/2" ID x2-1/4" OD, 10 ga.
35	4				RHW6202	Grade 5 Lock Washer: 3/8"
39	8				RHW8090	Grease Zerk: ¼", 28 tpi, Self-Tapping
40	12				RHW8166	Retaining Ring: 1-1/2" ID
41	4				RMR5002	Nylon Cable Ties: ¼" x 11"
42	1	Contact FFC to obtain the correct item.				Hydraulic Hose Protector: 1-7/8"
43	2	Contact FFC to obtain the correct item.				Hydraulic Hose
44	2	Contact FFC to obtain the correct item.				Hydraulic Elbow (Not required for all models)
45	2	Contact FFC to obtain the correct item.				Hydraulic Adapter (Not required. for all models)
46	1	Contact FFC to obtain the correct item.				Hydraulic Coupler: Male Connection
47	1	Contact FFC to obtain the correct item.				Hydraulic Coupler: Female Connection
						OPTIONAL ENDPLATE EXTENSION KIT (LAF5250)
48	2				LAF9556	Endplate Extension Plate
49	8				RHW1405	Grade 5 Hex Head Cap Screw: ½" x 1¾"
50	16				RHW5462	Grade 5 Flat Washer: ½", USS
51	8				RHW7403	Grade 5 Lock Nut: ½", 13 tpi

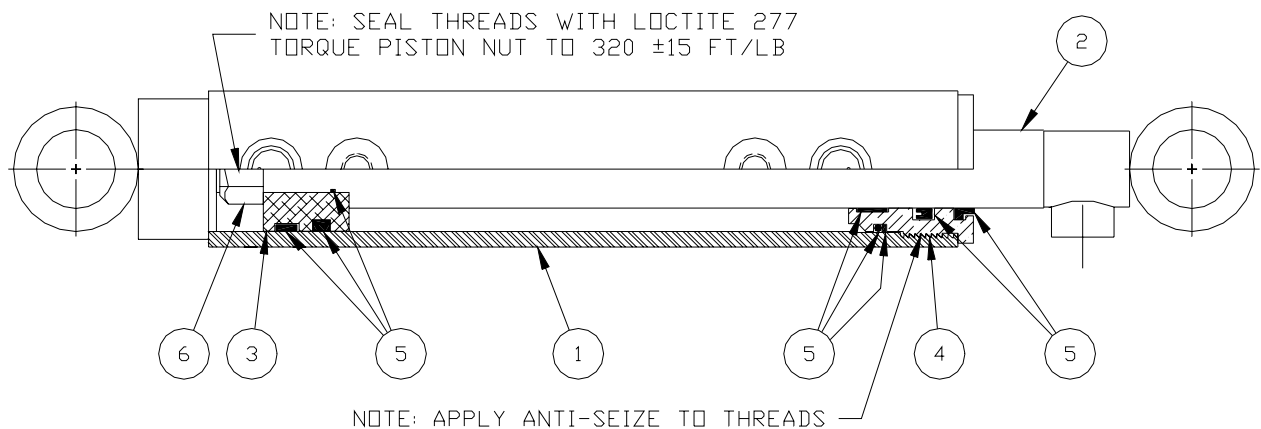
NOTE: All parts are the same as the LAF5087 except for those parts numbered under the other models.

SCRAP BUCKET PARTS LIST (Continued)

ITEM	QTY.	LAF5073 73"	LAF5078 78"	LAF5082 82"	LAF5087 87"	DESCRIPTION
						OPTIONAL 120 GRAPPLE HOSE/CYLINDER GUARD KIT (LAF5004)
15	2				LAF9571	Cylinder Cover Top Liner
16	2				LAF9572	Cylinder Guard
17	2				LAF9573	Cylinder Guard Liner
18	2				LAF9592	Cylinder Guard Top (varies by model)
19	2				LAF9593	Cylinder Guard Bottom (varies by model)
27	6				RHW1004	Grade 5 Hex Head Cap Screw: 1/4" x 3/4"
29	8				RHW1207	Grade 5 Hex Head Cap Screw: 3/8" x 1-1/4"
30	6				RHW1403	Grade 5 Hex Head Cap Screw: 1/2" x 1"
31	12				RHW5062	Grade 5 Flat Washer: 1/4", USS
32	8				RHW5262	Grade 5 Flat Washer: 3/8", USS
33	10				RHW5462	Grade 5 Flat Washer: 1/2", USS
35	8				RHW6202	Grade 5 Lock Washer: 3/8"
36	6				RHW6402	Grade 5 Lock Washer: 1/2"
37	6				RHW7003	Grade 5 Lock Nut: 1/4", 20 tpi
38	8				RHW7210	Clip Nut: 3/8", 16 tpi
						NUMBERS FROM HYDRAULIC CYLINDER ILLUSTRATION (LAF4797 below.)
1	1				LAF4804	Barrel: 2-1/2" I.D. x 8" Stroke With Parallel Cross Tube End
2	1				LAF4803	Shaft: 1 3/4" Dia. With Cross Tube End
3	1				LAF4806	Piston: 2-1/2"
4	1				LAF4543	Head: 2-1/2" O.D, Nominal
5	1				LAF4789	Seal Kit (Includes All Seals, O-Rings, Etc.)
6	1				LAF4805	Nut 1100

NOTE: All parts are the same as the LAF5087 except for those parts numbered under the other models.

HYDRAULIC CYLINDER ILLUSTRATION (LAF4797)



SCRAP BUCKET PARTS LIST

ITEM	QTY.	LAF5263 63"	LAF5266 66"	LAF5272 72"	LAF5277 77"	DESCRIPTION
						Hydraulic Fitting and components:
1	2				LAF4275	Bulkhead Run Tee: (3) 6MJ Fittings
2	6				LAF4098	Bulkhead Jam Nut: 5/16", 18 tpi.
3	1				LAF4157	Bulkhead Elbow: 90°, 6MJ-6MJ
4	4				LAF4246	Hydraulic Elbow: 45°, 6MB-6MJ
5	2				LAF4261	Hydraulic Elbow: 45°, 6MJ-6FJX
6	2				LAF4275	Bulkhead Run Tee: (3) 6MJ Fittings
7	2				LAF4302	Hydraulic Hose: ¼" x 19", 6FJ-6FJ
8	2				LAF4661	Hydraulic Cylinder
9	2				LAF4483	Cap: 6FJ
10	2				LAF4485	Hydraulic Hose: ¼" x 17-1/4", 6FJ-6FJ
11	2				LAF4486	Hydraulic Hose: ¼" x 23-1/2", 6FJ-6FJ
12	2				03-10019	Hydraulic Hose: ¼" x 13-1/4", 6FJ-6FJ
13	1				LAF4504	Hydraulic Fitting: 45° Bulkhead Elbow, 6MJ-6MJ
14	4				LAF9517	Spring Bushing: 1-1/4" ID-1-1/2"OD x 2-1/2"
15	2				LAF9533	Cylinder Cover Top Liner
16	2				LAF9532	Cylinder Guard
17	2				LAF9531	Cylinder Guard Liner
18	2				LAF9530	Cylinder Guard Top (varies by model)
19	2				LAF9529	Cylinder Guard Bottom (varies by model)
20	1				13-50012	Hose Guard (varies by model)
22	16				LAF9544	Spring Bushing: 1-1/4" ID-1-1/2"OD x 1-1/2"
23	2	Contact FFC to obtain the correct item.				Grapple
24	1	LAF9519	LAF9520	LAF9545	LAF9518	Bucket
25	2				LAF9543	Grapple Pivot Pin
26	4				LAF9542	Cylinder Pin
27	6				RHW1004	Grade 5 Hex Head Cap Screw: ¼" x ¾"
28	4				RHW1205	Grade 5 Hex Head Cap Screw: 3/8" x 1"
29	8				RHW1207	Grade 5 Hex Head Cap Screw: 3/8" x 1-1/4"
30	6				RHW1403	Grade 5 Hex Head Cap Screw: ½" x 1"
31	12				RHW5062	Grade 5 Flat Washer: ¼", USS
32	12				RHW5262	Grade 5 Flat Washer: 3/8", USS
33	10				RHW5462	Grade 5 Flat Washer: 1/2", USS
34	12				RHW5972	Machinery Bushing: 1¼" ID x1-7/8" OD, 1/8" thick
35	12				RHW6202	Grade 5 Lock Washer: 3/8"
36	6				RHW6402	Grade 5 Lock Washer: ½"
37	6				RHW7003	Grade 5 Lock Nut: ¼", 20 tpi
38	8				RHW7210	Clip Nut: 3/8", 16 tpi
39	8				RHW8090	Grease Zerk: ¼", 28 tpi, Self-Tapping
40	12				RHW8167	Retaining Ring: 1-¼" ID
41	4				RMR5002	Nylon Cable Ties: ¼" x 11"
42	1	Contact FFC to obtain the correct item.				Hydraulic Hose Protector: 1-7/8"
43	2	Contact FFC to obtain the correct item.				Hydraulic Hose
44	2	Contact FFC to obtain the correct item.				Hydraulic Elbow (Not required for all models)
45	2	Contact FFC to obtain the correct item.				Hydraulic Adapter (Not required for all models)
46	1	Contact FFC to obtain the correct item.				Hydraulic Coupler: Male Connection
47	1	Contact FFC to obtain the correct item.				Hydraulic Coupler: Female Connection
52	2				RHW5432	Grade 5 Flat Washer: ½", SAE

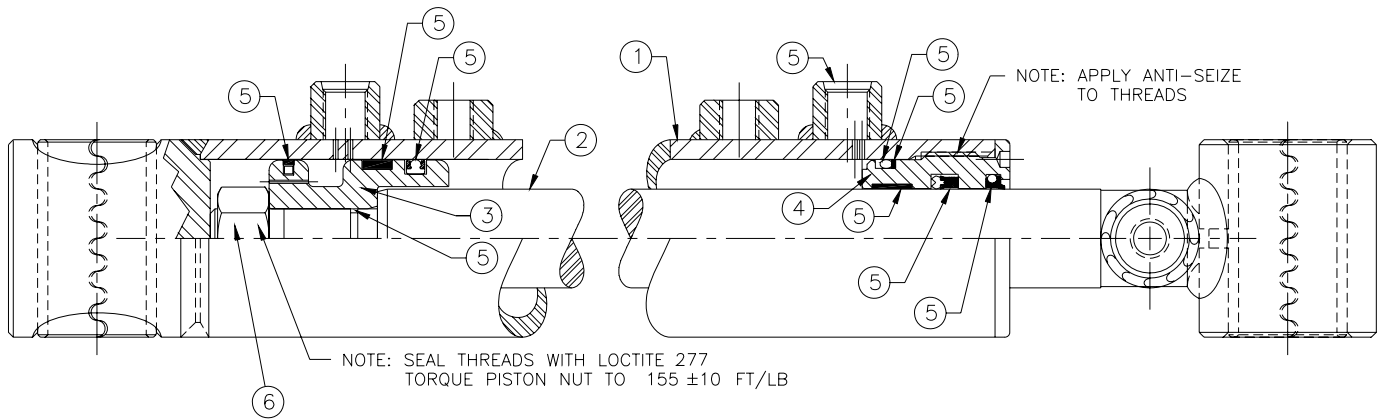
NOTE: All parts are the same as the LAF5277 except for those parts numbered under the other models.

SCRAP BUCKET PARTS LIST (Continued)

ITEM	QTY.	LAF5263 63"	LAF5266 66"	LAF5272 72"	LAF5277 77"	DESCRIPTION
						OPTIONAL ENDPLATE EXTENSION KIT (LAF5251)
48	2				LAF9516	Endplate Extension Plate
49	8				RHW1405	Grade 5 Hex Head Cap Screw: 1/2" x 1 1/2"
50	16				RHW5462	Grade 5 Flat Washer: 1/2", USS
51	8				RHW7403	Grade 5 Lock Nut: 1/2", 13 tpi
						NUMBERS FROM HYDRAULIC CYLINDER ILLUSTRATION (LAF4661 below.)
1	1				LAF4662	Barrel: 2" I.D. x 8" Stroke With Parallel Cross Tube End
2	1				LAF4663	Shaft: 1 1/4" Dia. With Cross Tube End
3	1				LAF4664	Piston: 2" OD
4	1				LAF4619	Head: 2" O.D, Nominal
5	1				LAF4617	Seal Kit (Includes All Seals, O-Rings, Etc.)
6	1				LAF4129	Nut: 3/4" Dia. 16 TPI, Grade 8

NOTE: All parts are the same as the LAF5277 except for those parts numbered under the other models.

HYDRAULIC CYLINDER ILLUSTRATION (LAF4661)



SCRAP BUCKET PARTS LIST

ITEM	QTY.	LAF5273 73"	LAF5278 78"	LAF5282 82"	LAF5287 87"	DESCRIPTION
						Hydraulic Fitting and components:
1	2				LAF4275	Bulkhead Run Tee: (3) 6MJ Fittings
2	6				LAF4098	Bulkhead Jam Nut: 5/16", 18 tpi.
3	1				LAF4157	Bulkhead Elbow: 90°, 6MJ-6MJ
4	4				LAF4246	Hydraulic Elbow: 45°, 6MB-6MJ
5	2				LAF4261	Hydraulic Elbow: 45°, 6MJ-6FJX
6	2				LAF4275	Bulkhead Run Tee: (3) 6MJ Fittings
7	2				LAF4302	Hydraulic Hose: ¼" x 19", 6FJ-6FJ
8	2				LAF4773	Hydraulic Cylinder
9	2				LAF4483	Cap: 6FJ
10	2				LAF4302	Hydraulic Hose: ¼" x 19", 6FJ-6FJ
11	2				LAF4486	Hydraulic Hose: ¼" x 23-1/2", 6FJ-6FJ
12	2				03-10019	Hydraulic Hose: ¼" x 13-1/4", 6FJ-6FJ
13	1				LAF4504	Hydraulic Fitting: 45° Bulkhead Elbow, 6MJ-6MJ
14	4				LAF9559	Spring Bushing: 1-3/4" ID-1-1/2"OD x 3"
15	2				LAF9571	Cylinder Cover Top Liner
16	2				LAF9572	Cylinder Guard
17	2				LAF9573	Cylinder Guard Liner
18	2				LAF9592	Cylinder Guard Top (varies by model)
19	2				LAF9593	Cylinder Guard Bottom (varies by model)
20	1				13-50012	Hose Guard (varies by model)
22	16				LAF9602	Spring Bushing: 1-3/4" ID-1-1/2"OD x 2"
23	2				LAF9603	Grapple
24	1	LAF9604	LAF9562	LAF9589	LAF9561	Bucket
25	2				LAF9606	Grapple Pivot Pin
26	4				LAF9607	Cylinder Pin
27	6				RHW1004	Grade 5 Hex Head Cap Screw: ¼" x ¾"
28	4				RHW1205	Grade 5 Hex Head Cap Screw: 3/8" x 1"
29	8				RHW1207	Grade 5 Hex Head Cap Screw: 3/8" x 1-1/4"
30	6				RHW1403	Grade 5 Hex Head Cap Screw: ½" x 1"
31	12				RHW5062	Grade 5 Flat Washer: ¼", USS
32	12				RHW5262	Grade 5 Flat Washer: 3/8", USS
33	10				RHW5462	Grade 5 Flat Washer: 1/2", USS
34	12				RHW5970	Machinery Bushing: 1 1/2" ID x 2-1/4" OD, 10 ga.
35	12				RHW6202	Grade 5 Lock Washer: 3/8"
36	6				RHW6402	Grade 5 Lock Washer: ½"
37	6				RHW7003	Grade 5 Lock Nut: ¼", 20 tpi
38	8				RHW7210	Clip Nut: 3/8", 16 tpi
39	8				RHW8090	Grease Zerk: ¼", 28 tpi, Self-Tapping
40	12				RHW8166	Retaining Ring: 1-1/2" ID
41	4				RMR5002	Nylon Cable Ties: ¼" x 11"
42	1	Contact FFC to obtain the correct item.				Hydraulic Hose Protector: 1-7/8"
43	2	Contact FFC to obtain the correct item.				Hydraulic Hose
44	2	Contact FFC to obtain the correct item.				Hydraulic Elbow (Not required for all models)
45	2	Contact FFC to obtain the correct item.				Hydraulic Adapter (Not required. for all models)
46	1	Contact FFC to obtain the correct item.				Hydraulic Coupler: Male Connection
47	1	Contact FFC to obtain the correct item.				Hydraulic Coupler: Female Connection

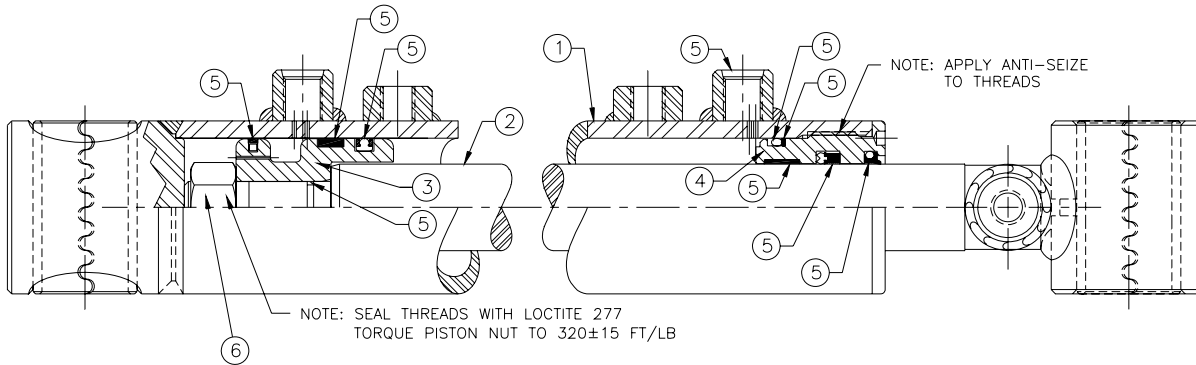
NOTE: All parts are the same as the LAF5287 except for those parts numbered under the other models.

SCRAP BUCKET PARTS LIST (Continued)

ITEM	QTY.	LAF5273 73"	LAF5278 78"	LAF5282 82"	LAF5287 87"	DESCRIPTION
OPTIONAL ENDPLATE EXTENSION KIT (LAF5250)						
48	2				LAF9556	Endplate Extension Plate
49	8				RHW1406	Grade 5 Hex Head Cap Screw: 1/2" x 1 3/4"
50	16				RHW5462	Grade 5 Flat Washer: 1/2", USS
51	8				RHW7403	Grade 5 Lock Nut: 1/2", 13 tpi
NUMBERS FROM HYDRAULIC CYLINDER ILLUSTRATION (LAF4773 below.)						
1	1				LAF4786	Barrel: 2-1/2" I.D. x 8" Stroke With Parallel Cross Tube End
2	1				LAF4787	Shaft: 1 3/4" Dia. With Cross Tube End
3	1				LAF4788	Piston: 2-1/2"
4	1				LAF4543	Head: 2-1/2" O.D, Nominal
5	1				LAF4789	Seal Kit (Includes All Seals, O-Rings, Etc.)
6	2				LAF4104	Grade 8 Nut: 1" 14 tpi.

NOTE: All parts are the same as the LAF5287 except for those parts numbered under the other models.

HYDRAULIC CYLINDER ILLUSTRATION (LAF4773)



SCRAP BUCKET PARTS LIST

ITEM	QTY.	LAF5283 82"	LAF5294 93"	DESCRIPTION
				Hydraulic Fittings and Components:
1	2		LAF4097	Bulkhead Branch Tee: (3) 6MJ Fittings
2	6		LAF4098	Bulkhead Jam Nut: 5/16", 18 tpi.
3	1		LAF4157	Bulkhead Elbow: 90°, 6MJ-6MJ
4	4		LAF4246	Hydraulic Elbow: 45°, 6MB-6MJ
5*	4	(See NOTE below)	LAF4261	Hydraulic Elbow: 45°, 6MJ-6FJX
6	2		LAF4275	Bulkhead Run Tee: (3) 6MJ Fittings
7	2		LAF4485	Hydraulic Hose: 1/4" x 17-1/4", 6FJ-6FJ
8	2		LAF4773	Hydraulic Cylinder
9			Not Used	
10	2		LAF4485	Hydraulic Hose: 1/4" x 17-1/4", 6FJ-6FJ
11	2		LAF4487	Hydraulic Hose: 1/4" x 14", 6FJ-6FJ
12	2		LAF4487	Hydraulic Hose: 1/4" x 14", 6FJ-6FJ
13	1		LAF4157	Bulkhead Elbow: 90°, 6MJ-6MJ
14	4		LAF9559	Spring Bushing: 1-3/4" ID-1-1/2"OD x 3"
15	2		LAF9571	Cylinder Cover Top Liner
16	2		LAF9572	Cylinder Guard
17	2		LAF9573	Cylinder Guard Liner
18	1 each		LAF9592 (left) LAF9524 (right)	Cylinder Guard Top
19	1 each		LAF9593 (left) LAF9525 (right)	Cylinder Guard Bottom
20			Not Used	
21			Not Used	
22	16		LAF9602	Spring Bushing: 1-3/4" ID-1-1/2"OD x 2"
23	2		LAF9603	Grapple
24	1	LAF9590	LAF9560	Bucket
25	2		LAF9606	Grapple Pivot Pin
26	4		LAF9607	Cylinder Pin
27	6		RHW1004	Grade 5 Hex Head Cap Screw: 1/4" x 3/4"
28			Not Used	
29	8		RHW1207	Grade 5 Hex Head Cap Screw: 3/8" x 1-1/4"
30	6		RHW1403	Grade 5 Hex Head Cap Screw: 1/2" x 1"
31	12		RHW5062	Grade 5 Flat Washer: 1/4", USS
32	8		RHW5262	Grade 5 Flat Washer: 3/8", USS
33	10		RHW5462	Grade 5 Flat Washer: 1/2", USS
34	12		RHW5970	Machinery Bushing: 11/2" ID x2-1/4" OD, 10 ga. thick
35	8		RHW6202	Grade 5 Lock Washer: 3/8"
36	6		RHW6402	Grade 5 Lock Washer: 1/2"
37	6		RHW7003	Grade 5 Lock Nut: 1/4", 20 tpi
38	8		RHW7210	Clip Nut: 3/8", 16 tpi
39	8		RHW8090	Grease Zerk: 1/4", 28 tpi, Self-Tapping
40	12		RHW8166	Retaining Ring: 1-1/2" ID
41	2		RMR5002	Nylon Cable Ties: 1/4" x 11"
42		Not Supplied by FFC		
43		Not Supplied by FFC		
44		Not Supplied by FFC		
45		Not Supplied by FFC		
46		Not Supplied by FFC		
47		Not Supplied by FFC		

NOTE: All parts are the same as the LAF5294 except for those parts numbered under the other models.

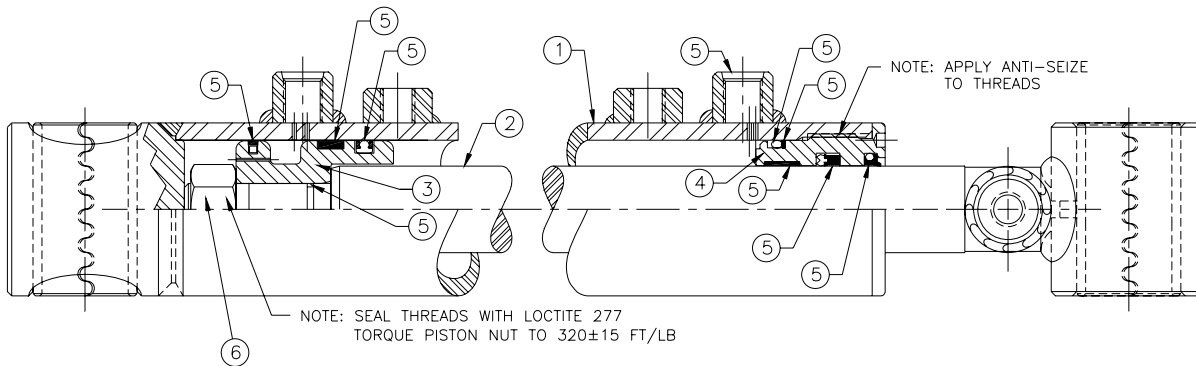
*NOTE: Item (5) is installed above the bulkhead plate for these models rather than as shown on the Parts Illustration (page 9).

SCRAP BUCKET PARTS LIST (Continued)

ITEM	QTY.	LAF5283 82"	LAF5294 93"	DESCRIPTION
OPTIONAL ENDPLATE EXTENSION KIT (LAF5252)				
48	2		LAF9515	Endplate Extension Plate
49	8		RHW1406	Grade 5 Hex Head Cap Screw: 1/2" x 1 3/4"
50	16		RHW5462	Grade 5 Flat Washer: 1/2", USS
51	8		RHW7403	Grade 5 Lock Nut: 1/2", 13 tpi
NUMBERS FROM HYDRAULIC CYLINDER ILLUSTRATION (LAF4773 below.)				
1	1		LAF4786	Barrel: 2-1/2" I.D. x 8" Stroke With Parallel Cross Tube End
2	1		LAF4787	Shaft: 1 3/4" Dia. With Cross Tube End
3	1		LAF4788	Piston: 2-1/2"
4	1		LAF4543	Head: 2-1/2" O.D, Nominal
5	1		LAF4789	Seal Kit (Includes All Seals, O-Rings, Etc.)
6	2		LAF4104	Grade 8 Nut: 1" 14 tpi.

NOTE: All parts are the same as the LAF5294 except for those parts numbered under the other models.

HYDRAULIC CYLINDER ILLUSTRATION (LAF4773)



SUPPLEMENTAL

IMPORTANT Failure to install Flow Restrictor Valve as specified below **CAN** result in damage to the power unit and **WILL** void all FFC Attachments warranties.

MODELS:

CASE 021D, 221D and 321D

NEW HOLLAND LW50.B, LW60.B, LW70.B and LW80.B

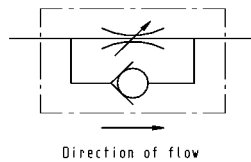
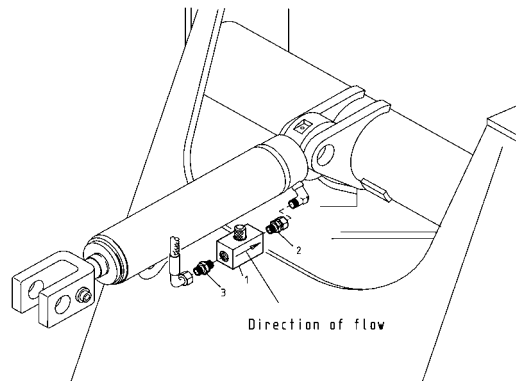
Action Required

Install the Flow Restrictor Valve as shown below. The amount of flow restriction this valve provides is adjustable. Turning the knurled knob on the valve clockwise increases the flow restriction which reduces the speed of the bucket cylinder retraction. Turning the knurled knob counter-clockwise decreases the flow restriction which increases the speed of the bucket cylinder retraction. The bucket cylinder extension speed is not affected by this adjustment. After installation, adjust the valve so the attachment will not dump too fast and slam against the stops.

Parts Information

The Adjustable Flow Restrictor Valve Kit (FFC Attachments) part number is 03-10009 (Case part #424240A1). This valve is made up of the following parts:

Item.	Qty.	Part No.	Designation
1	1	424239A1	Valve, Adjustable Flow Restrictor
2	1	421409A1	Union
3	1	420798A1	Union



SCRAP BUCKET SPECIFICATIONS

Model Number	Overall Width	Overall Height		Overall Depth	Shipping Weight
		Closed	Open		
STANDARD DUTY UTILITY					
LAF5063	64-9/16"	28-1/8"	48-1/4"	38-1/2"	874 lbs.
LAF5066	66-1/4"	28-1/8"	48-1/4"	38-1/2"	888 lbs.
LAF5072	73-3/4"	28-1/8"	48-1/4"	38-1/2"	932 lbs.
LAF5077	78-3/4"	28-1/8"	48-1/4"	38-1/2"	961 lbs.
STANDARD DUTY CONSTRUCTION					
LAF5073	74"	28-11/16"	48-13/16"	40-1/4"	1246 lbs.
LAF5078	79"	28-11/16"	48-13/16"	40-1/4"	1281 lbs.
LAF5082	83"	28-11/16"	48-13/16"	40-1/4"	1309 lbs.
LAF5087	88"	28-11/16"	48-13/16"	40-1/4"	1344 lbs.
HEAVY DUTY UTILITY					
LAF5263	64-9/16"	28-1/8"	48-1/4"	38-1/2"	907 lbs.
LAF5266	66-1/4"	28-1/8"	48-1/4"	38-1/2"	921 lbs.
LAF5272	73-3/4"	28-1/8"	48-1/4"	38-1/2"	965 lbs.
LAF5277	78-3/4"	28-1/8"	48-1/4"	38-1/2"	994 lbs.
HEAVY DUTY CONSTRUCTION					
LAF5273	74"	28-11/16"	48-13/16"	40-1/4"	1279 lbs.
LAF5278	79"	28-11/16"	48-13/16"	40-1/4"	1314 lbs.
LAF5282	83"	28-11/16"	48-13/16"	40-1/4"	1342 lbs.
LAF5287	88"	28-11/16"	48-13/16"	40-1/4"	1377 lbs.
EXTRA HEAVY DUTY CONSTRUCTION					
LAF5283	83"	31-3/4"	51-3/4"	38-7/8"	1465 lbs.
LAF5294	94"	31-3/4"	51-3/4"	38-7/8"	1545 lbs.
All replacement hydraulic hoses and fittings must have a minimum rated working pressure of 4,000 psi.					

TORQUE SPECIFICATIONS FOR STANDARD MACHINE HARDWARE (FOR REFERENCE ONLY)

Bolt Size	SAE Grade Bolt	Torque Ft./Lbs
1/4" - 20	5	8
3/8" - 16	5	30
1/2" - 13	5	75



PALADIN LIGHT CONSTRUCTION

Warranty Registration Form and Delivery Inspection Report

IMPORTANT! Warranty **Void** if card is not returned with 10 days.
All Applicable sections **must** be filled in.

This section to be filled out and signed by Dealer at time of delivery.

Warranty Registration

Customer's Name _____	Dealer's Name _____
Address _____	Address _____
City _____ State _____ Zip _____	City _____ State _____ Zip _____
Phone _____	CHECK ONE:
Loader / Tractor Model _____	Construction Use _____
Delivery Date _____	Agricultural Use _____
Model or Part # _____	Landscape Use _____
Serial # _____	Other: _____

Dealer Inspection *(check items applicable)*

- | | |
|--|--|
| _____ All Decals installed (see operator's manual) | _____ Review Operating and Safety Instructions |
| _____ Hydraulic fittings tight and free of leaks | _____ Guards and covers in place and secure |
| _____ Fasteners tight | _____ Does Product Function Properly |

I have thoroughly instructed the buyer on the above described equipment. This review included: The Operator's manual content, equipment care, adjustments, safe operation and applicable warranty policy.

Date _____ Dealer's Rep. signature _____

This section to be completed and signed by the customer

	1 Excellent	2 Good	3 Average	4 Unsatisfactory	5 Poor
QUALITY ASSURANCE RATING					
Question:		FFC		Local Dealer	
Quality of Product: Appearance		_____			
Construction		_____			
Quality of Service		_____		_____	
Value (Priced Fairly)		_____		_____	
Does it perform as claimed		_____			

The above described equipment and Operator's Manual have been received by me and I have been thoroughly instructed as to care, adjustments, safe operation and applicable warranty policy.

Date: _____ Owner's signature _____

NOTE! Make one copy each for the dealer's and owner's records. Mail original to FFC Attachments.



PALADIN LIGHT CONSTRUCTION

FFC LIMITED 12 MONTH WARRANTY

Thank you for purchasing a FFC product. Warranty protection is valid only when this Warranty Registration is completed and signed by the customer and dealer, and mailed to FFC. I hereby acknowledge that I have received a copy of the owners Limited Warranty and I accept the terms therein.

For a period of 12 months from date of delivery of product to the original user, FFC, warrants each product to be free from manufacturing defects, subject to the limitations contained in this policy.

This warranty does not apply to defect caused, in whole or in part, by unreasonable use while in the possession of the user, including, but not limited to: failure to properly set up product; failure to provide reasonable and necessary maintenance; normal wear; routine tune ups or adjustments; improper handling or accidents; operation at speed or load conditions contrary to published specification; improper or insufficient lubrication; improper storage. This warranty is also not a guarantee that the performance of each product will meet the expectations of the purchaser.

FFC shall not be liable for consequential damages of any kind, including, but not limited to: consequential labor costs or transportation charges in connection with the replacement or repair of defective parts; lost time or expense which may have accrued because of said defects. In no event shall FFC, Inc.'s total liability hereunder exceed the product purchase price.

FFC makes no warranty with respect to trade accessories or any component or accessory of the product which was not manufactured by FFC, including any purchased components on any kind. These are subject to the warranties of their respective manufacturers. The warranty will be considered void if the product or any part of the product is modified or repaired in any way not expressly authorized by FFC, or if closed components are disassembled prior to return. Closed components include, but are not limited to: gearboxes, hydraulic pumps, motors, cylinders, and actuators.

Our obligation under the warranty is expressly limited, at our option, to the replacement or repair at FFC, of Lee, Illinois, or at a service facility designated by us, or such part or parts as inspection shall disclosed to have been defective. We are not responsible for unauthorized repairs or replacements. Any implied or statutory warranties, including any warranty of merchantability or fitness for a particular purpose, are expressly limited to the duration of this written warranty. We make no other express or implied warranty, nor is anyone authorized to make any in our behalf. This warranty cannot be extended, broadened, or changed except in writing by an authorized officer of FFC.