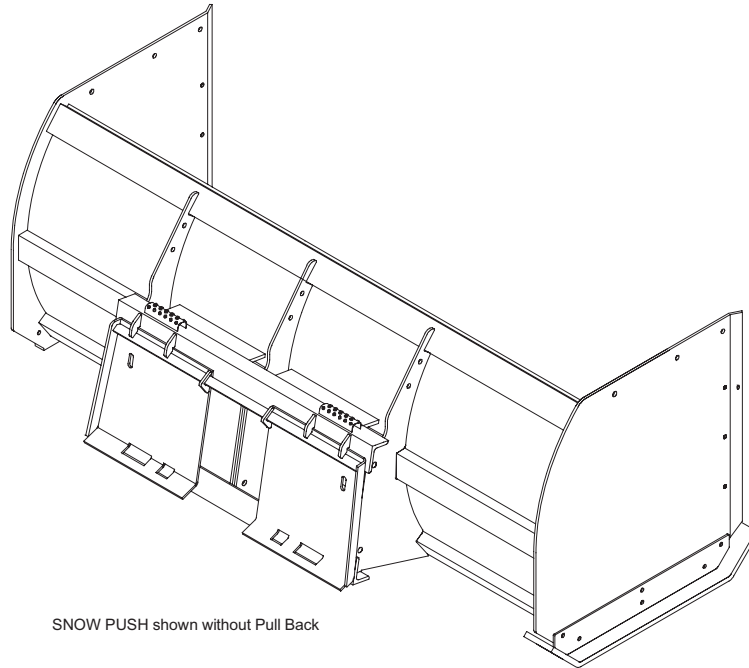




PATENTED
SNOW PUSH



SNOW PUSH shown without Pull Back

FFC SERIAL NUMBER: _____

MACHINE SERIAL NUMBER: _____

Manual Number: MR35630
Models: LAF3620, LAF3619, LAF3618, LAF3617
LAF3652 and LAF3654
11016, 11020 and 11024

Including Instructions for:
Optional Pull Back & Pull Back Rubber Edge Kit
(LAF models only).

Release Date: December 21, 2005

TABLE OF CONTENTS

Introduction, General Information, Serial Number	1
Owner and Operator Safety Information	2-5
Definitions of Safety Terms and Symbols, Accident Prevention.....	2
Safety Instructions	3-4
Safety Signs	5
Power Unit Specifications, Mounting	6
Setup	6-8
Operation, Maintenance.....	9
Service, Storage	10
Parts Illustration (LAF Models).....	11
Parts List (LAF Models)	12-14
Parts Illustration & List (Large Loader Models).....	15
Specifications	16
Warranty	i

INTRODUCTION

Congratulations on your purchase of a new FFC **Snow Push**. This product has been designed and built to push loose material forward, primarily snow and manure. This product, when equipped with the optional Pull Back, can also be used for pulling loose material backward. You or any other person who will be assembling, operating, maintaining, or working with this product are required to read and completely understand the information and instructions contained in this manual. If anyone does not fully understand every part of this manual, please obtain further assistance by contacting the dealer from which this product was purchased or by contacting FFC at the telephone number or address listed on the cover of this manual. Keep this manual available for reference whenever this product is being handled or used. Provide this manual to any new owners and/or operators.

This manual covers model(s) **LAF3620, LAF3619, LAF3618, LAF3617, LAF3652, LAF3654, 11016, 11020, and 11024**. The difference between the models is the width of the product, details of which are covered on the parts list and specifications page(s).

GENERAL INFORMATION

The purpose of this manual is to assist in assembling, mounting, operating, and maintaining your **Snow Push**. Read this manual carefully to obtain valuable information and instructions that will help you achieve years of safe and dependable service.

The illustrations and data used in this manual were current at the time of printing, but due to possible engineering and/or production changes, this product may vary slightly in detail. FFC reserves the right to redesign and/or change components as may be necessary without notification to anyone.

Throughout this manual, references may be made to:

Power Unit	The engine-driven machine to which this product must be attached.
Right, Left, Front, Rear	Directions that are determined in relation to the operator of the equipment when seated in the normal operation position.
IMPORTANT	Precautions that must be followed to prevent damage to equipment.
NOTICE	Precautions that must be followed to prevent substandard performance.

SERIAL NUMBER LOCATION

Always refer to the model and serial number when ordering parts or requesting information from your dealer. The serial number plate for this product is located on the upper left rear face of the moldboard of your Snow Push.

Reference Information	
Model Number	Loader Make
Serial Number	Loader Model
Date Purchased	Loader Serial Number

DEFINITION OF SAFETY TERMS AND SYMBOLS

Throughout this manual, the terms **DANGER**, **WARNING**, and **CAUTION** are used to indicate the degree of hazard to personnel if proper safety procedures are not followed. These words will be used in conjunction with the Safety Alert Symbol: a dark triangle containing a white exclamation mark.



The Safety Alert Symbol means:

ATTENTION!

BECOME ALERT!

YOUR SAFETY IS INVOLVED!

DANGER

Indicates an imminently hazardous situation which, if not avoided, **WILL** result in death or serious injury.

WARNING

Indicates a potentially hazardous situation which, if not avoided, could result in death or serious injury.

CAUTION

Indicates a potentially hazardous situation which, if not avoided, may result in minor or moderate injury;
OR

may also be used to alert against unsafe practices that may result in personal injury.

ACCIDENTS CAN BE PREVENTED WITH **YOUR HELP !**

No accident prevention program can be successful without the wholehearted cooperation of the person who is directly responsible for the operation of the equipment.

To read equipment accident reports from all over the country is to be convinced that a large number of accidents can be prevented only by operators who consistently anticipate the results of their actions and thus prevent accidents from ever occurring. No power-driven equipment, whether it is on the highway, in a farm field, or in an industrial plant, can be any safer than is allowed by the person who is at the controls.

If accidents are to be prevented (and accidents can be prevented), that prevention will come from equipment operators who accept their complete responsibility.

The designer, the manufacturer, and the safety engineer all help create a safe product, but the operator of that product can wipe out their combined efforts with a single careless act.

The best safety device is a careful operator. FFC and your dealer ask that **YOU** be that careful, responsible equipment operator.

YOU ARE THE KEY TO SAFETY BECAUSE:

YOU are responsible for the SAFE operation and maintenance of **YOUR** Snow Push.

YOU are responsible to familiarize yourself, and anyone else who will assemble, operate, maintain, or work around this product, with the SAFETY information contained in this manual.

YOU are responsible to read ALL information contained in this manual to any operators or maintenance personnel who are not fully able to read the written English language. Whether **YOU** read the manual as written or translate it into another language, **YOU** must make certain that all operators and maintenance personnel have a complete understanding of the full and exact contents of this manual. Translations of this manual into other languages are available by submitting a written request to FFC.

YOU can reduce the risk of injury or death by following all safety precautions and by using good safety practices.

SAFETY INSTRUCTIONS

WORK SAFELY - A CAREFUL OPERATOR IS THE BEST INSURANCE AGAINST ACCIDENTS !!

WARNING SECTION



WARNING

Obey all the safety instructions listed in this section and throughout this manual. Failure to obey instructions in this section could result in death or serious injury.

BEFORE ATTEMPTING ANY TYPE OF ASSEMBLY, OPERATION, MAINTENANCE, OR OTHER WORK ON OR NEAR THIS PRODUCT:

- **READ AND COMPLETELY UNDERSTAND THIS MANUAL.**
- **READ AND COMPLETELY UNDERSTAND THE MANUALS PROVIDED WITH YOUR POWER UNIT, LOADER, and QUICK-ATTACH.**
- Read and understand all safety signs on this product and on your power unit, loader, and quick-attach.
- Know all your controls and know how to quickly stop all power unit movement, the Snow Push movement, and the engine in case of an emergency.
- Know and obey all applicable government rules, O.S.H.A. regulations, local laws and other professional guidelines for your operation.
- Make sure that anyone who will be assembling, mounting, maintaining, repairing, removing, and/or storing this product:
 - has been instructed in the safe operation of this product and of the power unit, loader, and quick-attach to which this product is attached.
 - is physically and mentally capable of the safe operation of this type of equipment.
 - is not under the influence of drugs or alcohol.
 - is carefully supervised from a safe distance, especially if such person is inexperienced.
 - wears appropriate protective equipment (i.e. hardhat, safety glasses, work gloves, protective shoes, respirator, ear protection, etc.).
 - does not wear loose fitting clothing, loose or uncovered hair, or any accessories (jewelry, necktie, scarf, wrist watch, etc.) that can catch in moving parts.
 - has annually reviewed all safety instructions.
- Know and follow good work practices when assembling, mounting, maintaining, repairing, removing, and storing this product:
 - Work on a level surface in a well-lit area.
 - Keep the area clean and dry.
 - Use properly grounded electrical outlets & tools.

- Use the right tool for the job at hand.
- Make sure that your tools are in good condition for performing the desired function.
- When using tools, wear the protective equipment specified by the tool manufacturer. (i.e. hardhat, safety glasses, work gloves, protective shoes, etc.)

WHEN YOUR POWER UNIT IS USED DURING ANY TYPE OF ASSEMBLY, OPERATION, MAINTENANCE, OR OTHER WORK ON OR NEAR THIS PRODUCT:

- Before leaving the operator's station or before beginning any type of work on this product, lower this product to the ground, apply your power unit's parking brake, stop the engine, remove the starter key, wait for all moving parts to stop, and then relieve all pressure in the hydraulic lines. Refer to your power unit's operator's manual for instructions on how to relieve hydraulic pressure in lines.
- Know your loader's safe lifting and operating capacity and the weight of this product. See the specifications in this manual for the weight of this product and refer to your power unit's and your loader's operator's manuals for safe operating limits. Lift capacity may be reduced if using a quick-attach.
- Never allow anyone, except the operator, to be around the power unit or this product when either is in motion. Do not startup unless others are clear of the work area.
- Do not allow riders on this product or the power unit.
- Do not stand or climb on this product when raised.
- Never lift the lowest portion of this product higher than necessary for the work being performed.
- Do not place any part of your body under any part of this product unless this product is securely resting on adequate blocking or on the ground.
- Do not use blocking made of concrete blocks, logs, buckets, barrels or any other material that could suddenly collapse or shift positions. Do not use wood or steel blocking that shows any signs of material decay. Do not use blocking that is warped, twisted, or tapered.
- Never operate controls from the ground. Operate the controls only from the operator's station.
- Never leave equipment unattended with the engine running or with this product raised on the loader.
- Be aware of the added weight and width of this product. Reduce travel speeds accordingly, especially when traveling over rough ground.
- Keep this product close to the ground and under control when transporting.

SAFETY INSTRUCTIONS

WORK SAFELY - A CAREFUL OPERATOR IS THE BEST INSURANCE AGAINST ACCIDENTS !!

WARNING SECTION (CONTINUED)



WARNING

Obey all the safety instructions listed in this section and throughout this manual. Failure to obey instructions in this section could result in death or serious injury.

WHEN MOUNTING THIS PRODUCT TO YOUR POWER UNIT:

- Refer to the operator's manuals of your power unit, your loader, and your quick-attach for special or detailed mounting instructions.
- This product should fit onto the quick-attach or loader arms of your power unit the same as the original products that were designed by your loader / quick-attach manufacturer.
- If this product does not fit properly, contact FFC before operating.
- Never place your finger into the mounting plate or loader holes. A slight movement of the power unit or this product could cause serious injury.

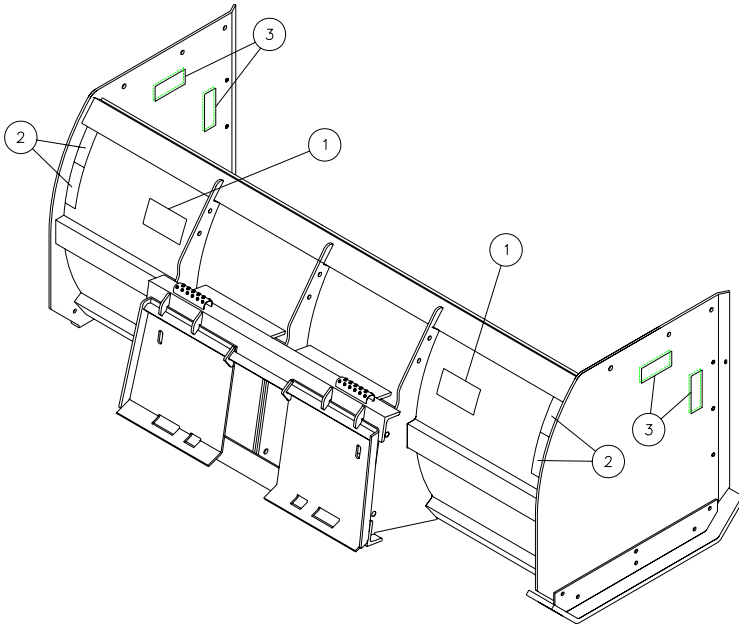
BEFORE EACH USE, THOROUGHLY INSPECT THIS PRODUCT AND:

- Make certain that all safety signs are in place and legible. Refer to the safety sign page in this manual for the placement of safety signs for this product.
- Replace all damaged or excessively worn parts and hardware only with genuine FFC parts or with properly rated fasteners.
- Make certain that all locking pins, latches, and connection devices are properly installed and secured.
- Make certain that all protective guards, canopies, doors, etc. are in place and secure.

WHEN ADJUSTING, SERVICING OR REPAIRING THIS PRODUCT:

- Make no modifications to your Snow Push.
- When making repairs, use only genuine FFC parts or, for fasteners, use only properly rated parts.
- Replacement parts, for parts with safety signs attached, must also have safety signs attached.

SAFETY SIGN LOCATIONS



ITEM	QTY.	PART # - DESCRIPTION
1	2	50-0723 – Read Manual
2	4	RDL3131 – Red Reflective Tape
3	8	RDL3132 – Amber Reflective Tape

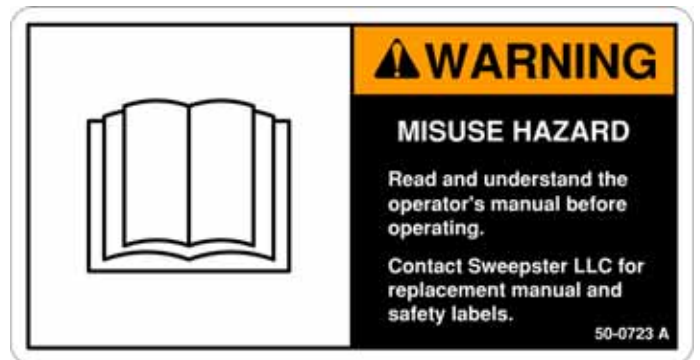
INSTRUCTIONS

- Keep all safety signs clean and legible.
- Replace all missing, illegible, or damaged safety signs.
- Replacement parts for parts with safety signs attached must also have safety signs attached.
- Safety signs are available, free of charge, from your dealer or from FFC.

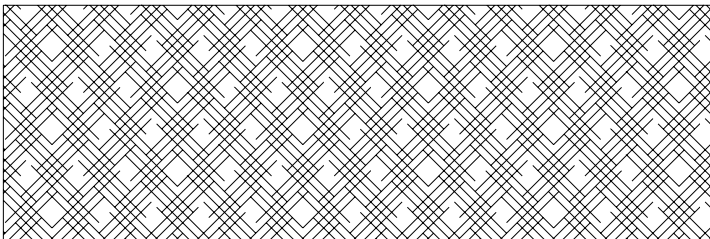
PLACEMENT OR REPLACEMENT OF SAFETY SIGNS

1. Clean the area of application with non-flammable solvent, and then wash the same area with soap and water.
2. Allow the surface to fully dry.
3. Remove the backing from the safety sign, exposing the adhesive surface.
4. Apply the safety sign to the position shown in the diagram above and smooth out any bubbles.

ITEM 1



ITEM 2 (red) & ITEM 3 (amber)



IMPORTANT

POWER UNIT SPECIFICATIONS
Exceeding any of the maximum recommended power unit specifications **CAN** result in damage to this product and **WILL** void all FFC warranties

LAF MODELS:

DESCRIPTION	SPECIFICATIONS
Weight of Power Unit without Snow Push	32,000 lbs. maximum
Operating Capacity of Power Unit's loader	5,000 lbs. maximum
Lift Capacity of Power Unit's loader	10,000 lbs. maximum
Rear Ballast	As required to maintain full power unit stability. (note the Shipping Weight on page 10, then see the operator's manual(s) for your power unit, loader, and quick-attach for ballasting needs).

LARGE LOADER MODELS:

DESCRIPTION	MINIMUM LOADER BUCKET CAPACITY
16' 11016	2.5 yards
20' 11020	4.5 yards
24' 11024	5.5 yards

SNOW PUSH MOUNTING



SAFETY FIRST!! READ AND UNDERSTAND THE SAFETY INSTRUCTIONS (pages 2-5 of this manual) BEFORE BEGINNING ANY SNOW PUSH MOUNTING

1. Place this product on a firm, level surface that is large enough to safely accommodate this product, your power unit and all workers involved in the mounting process.
2. Refer to the operator's manual(s) for your power unit, loader, and quick-attach and follow the mounting instructions contained therein.
3. Carefully raise the loader and cycle the tilt cylinders to check clearances and to verify that all mounting procedures have been successfully completed.

SNOW PUSH SETUP



SAFETY FIRST!! READ AND UNDERSTAND THE SAFETY INSTRUCTIONS (pages 2-5 of this manual) BEFORE BEGINNING ANY SNOW PUSH SETUP

LAF MODEL WIDE SNOW PUSH INSTALLATION (If not assembled prior to delivery.)

1. Place the left and right Moldboard Weldments together on a flat level surface. Assemble, using (10) 5/8" diameter by 2" long bolts, (20) flat washers, (10) lock washers, and (10) hex nuts. Tighten the nuts to 150 ft. lbs.
2. Install the mounting plate to the rear of the Moldboard using (4) 5/8" diameter by 2" long bolts, (8) flat washers, (4) lock washers, and (4) hex nuts, on the right (2) back plate ribs. The center and left ribs will use (6) 5/8" diameter by 2-1/4" long bolts, (12) flat washers, (6) lock washers, and (6) hex nuts. The left (2) ribs will also require (4) large spacer washers. Tighten the nuts to 150 ft. lbs.
3. The rubber edge can then be installed. Use the "Adjusting/Replacing the rubber edge" instructions found in the SNOW PUSH SERVICE section.

PULL BACK INSTALLATION for LAF models only (If not assembled prior to delivery.)

1. Park your power unit on a level surface with your Snow Push properly attached.
2. Place your power unit's transmission in "Park" and engage the parking brake.
3. Lower your Snow Push down on to the level surface in the normal operating position.
4. Shut off your power unit's engine, remove the starter key, wait for all moving parts to come to a stop, and relieve all pressure in the hydraulic lines.



SAFETY FIRST!! READ AND UNDERSTAND THE SAFETY INSTRUCTIONS (pages 2-5 of this manual) BEFORE BEGINNING ANY SNOW PUSH SETUP

5. Loosely connect a side wear shoe to the inside face of one of the two side plates using (3) ½” diameter by 1¾” long bolts, (6) ½” flat washers, (3) ½” lock washers, and (3) ½” hex nuts. Slide the side wear shoe forward as far as possible and tighten the nuts to 75 ft. lbs. Repeat for the other side wear shoe.
6. Restart your power unit, raise your loader as required, roll your Snow Push forward 90°, and lower your Snow Push down upon the side wear shoes that were just installed above. Repeat the shut down procedure in step 4 above.

For 6’, 7’, 8’, and 10’ Models only:

7. Place the pull back weldment in position and secure each arm (one for the 6’ model and two for all other models) to the appropriate moldboard rib with (2) 5/8” diameter by 2¼” long bolts, (4) 5/8” flat washers, (2) lock washers, and (2) 5/8” hex nuts. Secure each end plate of the pull back weldment to the corresponding end plate of your Snow Push with (2) 5/8” diameter by 2” long bolts, (4) 5/8” flat washers, (2) lock washers, and (2) 5/8” hex nuts. Tighten the nuts to 150 ft. lbs.

For 12’ and 14’ Models Only:

8. Remove the (2) 5/8” diameter by 2” long bolts between the moldboard weldments at the rear top center where the pull back weldment will be mounted.
9. Install both Pull Back Weldments in position and loosely mount the outer arms and the end plates. Position the other Pull Back weldment and place (2) Spacer Plates and (2) Spacer Washers between the left and right Mold Board Weldment and loosely assemble the left and right pull back weldments using (3) 5/8” Diameter by 2-1/2” long bolts, (6) flat washers, (3) lock washers, and (3) hex nuts.
10. Mount the center arms to the center ribs on the moldboard using (2) 5/8” diameter by 2-1/2” long bolts, (4) flat washers, (2) lock washers, and (2) nuts. Tighten all the nuts to 150 ft. lbs. on the pull back kit.
11. Restart your power unit, raise your loader as required, roll your Snow Push back 90°, and lower your Snow Push down upon the base of your Snow Push in the normal operating position. Repeat the shut down procedure in step 4.
12. Loosen the nuts securing the side wear shoes, align the base of the shoes with base of the pull back weldment and retighten the nuts to 75 ft. lbs.

PULL BACK RUBBER EDGE KIT INSTALLATION

1. Repeat steps 1 through 4 from the PULL BACK INSTALLATION instructions.
2. Lay the rubber edge on top of the pull back weldment.
3. Lay the rubber edge strap on top of the rubber edge and loosely secure both to the pull back weldment with the appropriate number of ½” diameter by 2½” long bolts, ½” flat washers, and ½” center dent lock nuts.
4. Adjust the rubber edge so that a maximum of 1” of the rubber edge is exposed in front of the steel plate on the pull back weldment and tighten the nuts to 75 ft. lbs.

BUCKET-LIP MOUNT INSTRUCTIONS LAF MODELS

1. Place this product on a firm, level surface that is large enough to safely accommodate this product, your power unit and all workers involved in the mounting process.

IMPORTANT

Lifting this product before Step 7 (below)

CAN result in damage to this product and **WILL** void all FFC warranties.

2. Carefully raise the loader arms and slowly drive forward inserting the edge of your bucket between the rectangular tubings on the Snow Push mounting.
3. Slowly roll the bucket downward (dumping) until the bucket edge is touching the lower tubes and the top of the bucket floor is touching the upper tubes, keeping the edge as close to the back of the Snow Push as possible. This will make the distance between the chain links on the Snow Push and the Chain Loops on you bucket as close as possible.
4. Shut off your power unit’s engine, remove the starter key, wait for all moving parts to come to a stop, and relieve all pressure in the hydraulic lines.
5. Each of the center most chains should then be inserted though the chain loops on your bucket and then reattach to itself keeping the chain as tight as possible.
6. If the bucket is wider than 80” ID, then also connect the outer two chains as well.



SAFETY FIRST!! READ AND UNDERSTAND THE SAFETY INSTRUCTIONS (pages 2-5 of this manual) BEFORE BEGINNING ANY SNOW PUSH SETUP

7. Restart your power unit. Carefully raise the loader and cycle the rollback cylinders to verify that all mounting procedures have been successfully completed.

BUCKET LIP MOUNT INSTRUCTIONS LARGE LOADER MODELS

1. Place this product on a firm, level surface that is large enough to safely accommodate this product, your power unit and all workers involved in the mounting process.

IMPORTANT

Lifting this product before Step 7 (below)

CAN result in damage to this product and **WILL** void all FFC warranties.

2. Carefully raise the loader arms and slowly drive forward inserting the edge of your bucket between the cutout slots in the Snow Push mounting ears.
3. Slowly roll the bucket downward (dumping) until the bucket edge is touching the bottom of edges the cutouts and the top of the bucket floor is touching the upper edges, keeping the bucket edge as close to the back of the Snow Push as possible. This will make the distance between the chain links on the Snow Push and the Grab Hooks on your bucket as close as possible.

INSTALLING THE BINDER KIT

4. Shut off your power unit's engine, remove the starter key, wait for all moving parts to come to a stop, and relieve all pressure in the hydraulic lines.
5. Grab Hooks are to be welded to the side or back corners of the power unit's bucket. The location should be chosen so the chains will be parallel to the ground when attached. This allows for easy centering of the Snow Push on the bucket.
6. Attach one end of 3/8" Transport Chain sections to the right and left end of the Snow Push using 7/16" Shackles. Drop the opposite ends into the Grab Hooks on the bucket leaving enough slack to attach Ratchet Binders and allow for centering of the Snow Push. Tighten Ratchet Binders.
7. Restart your power unit. Carefully raise the loader and cycle the rollback cylinders to verify that all mounting procedures have been successfully completed. If the Snow Push is off center repeat Step #4 and adjust slack in chains to center the Snow Push. Make sure to re-tighten Ratchet Binders.

SNOW PUSH OPERATION



SAFETY FIRST!! READ AND UNDERSTAND THE SAFETY INSTRUCTIONS (pages 2-5 of this manual) BEFORE BEGINNING ANY SNOW PUSH OPERATION

IMPORTANT

Moving hardened or compacted materials or failing to properly adjust the rubber edge **CAN** result in damage to this product and **WILL** void all FFC warranties.

This product is designed to push loose material only. With the optional pull back attachment, loose material may also be pulled while backing with your power unit.

The rubber edge(s) should never be positioned to where more than 1" of rubber for 1" edge or 2" for 1-1/2" thick edge, is beyond the steel backing.

SNOW PUSH MAINTENANCE



SAFETY FIRST!! READ AND UNDERSTAND THE SAFETY INSTRUCTIONS (pages 2-5 of this manual) BEFORE BEGINNING ANY SNOW PUSH MAINTENANCE

BEFORE EACH USE

- Make sure that all nuts and bolts are in place and properly tightened.
- Make sure that all other fasteners are in place and are performing their specified function.
- Make sure that all safety signs are in place, are clean, and are legible.
(SEE THE SAFETY SIGN SECTION ON PAGE 5.)
- Replace any damaged parts and excessively worn parts.

SNOW PUSH SERVICE



SAFETY FIRST!! READ AND UNDERSTAND THE SAFETY INSTRUCTIONS (pages 2-5 of this manual) BEFORE BEGINNING ANY SNOW PUSH SERVICE

ADJUSTING / REPLACING THE RUBBER EDGE

1. Park your power unit on a level surface with this product properly attached.
2. Place your power unit's transmission in "Park" and engage the parking brake.
3. Lower your Snow Push down on to the level surface.
 - a) If adjusting / replacing the rubber edge on your Snow Push, roll your Snow Push forward 90°, and lower your Snow Push down upon the front edge of the side plates or, if equipped with the Pull Back option, down upon the side wear shoes.
 - b) If adjusting / replacing the rubber edge on the Pull Back weldment, lower your Snow Push down in the normal operating position.
4. Shut off your power unit's engine, remove the starter key, wait for all moving parts to come to a stop, and relieve all pressure in the hydraulic lines.
5. Loosen the nuts that secure the rubber edge and:
 - a) If adjusting the rubber edge, move the rubber edge so that a maximum of 1" (for 1" thick rubber or 2" for 1-1/2" thick rubber edge) of the rubber edge is exposed beyond the steel plate. Where the rubber edge is worn down at an angle from front to back, the 1" maximum means a 1" maximum from the bottom of the rubber edge as measured along the face that is next to the steel plate.
 - b) If replacing the rubber edge, remove the rubber edge strap and the old rubber edge.
 - i. Dispose of the old rubber edge in an environmentally suitable manner.
 - ii. Lay the new rubber edge on top of the weldment.
 - iii. Lay the rubber edge strap on top of the new rubber edge and loosely secure both to the steel plate with the appropriate number of 1/2" diameter bolts, 1/2" flat washers, and 1/2" center dent lock nuts.
 - iv. Adjust the rubber edge so that a maximum of 1" or 2" of the rubber edge is exposed beyond the steel plate.
6. Retighten the nuts to 75 ft. lbs. LAF models and 150 ft. lbs. on large loader models.

SNOW PUSH STORAGE



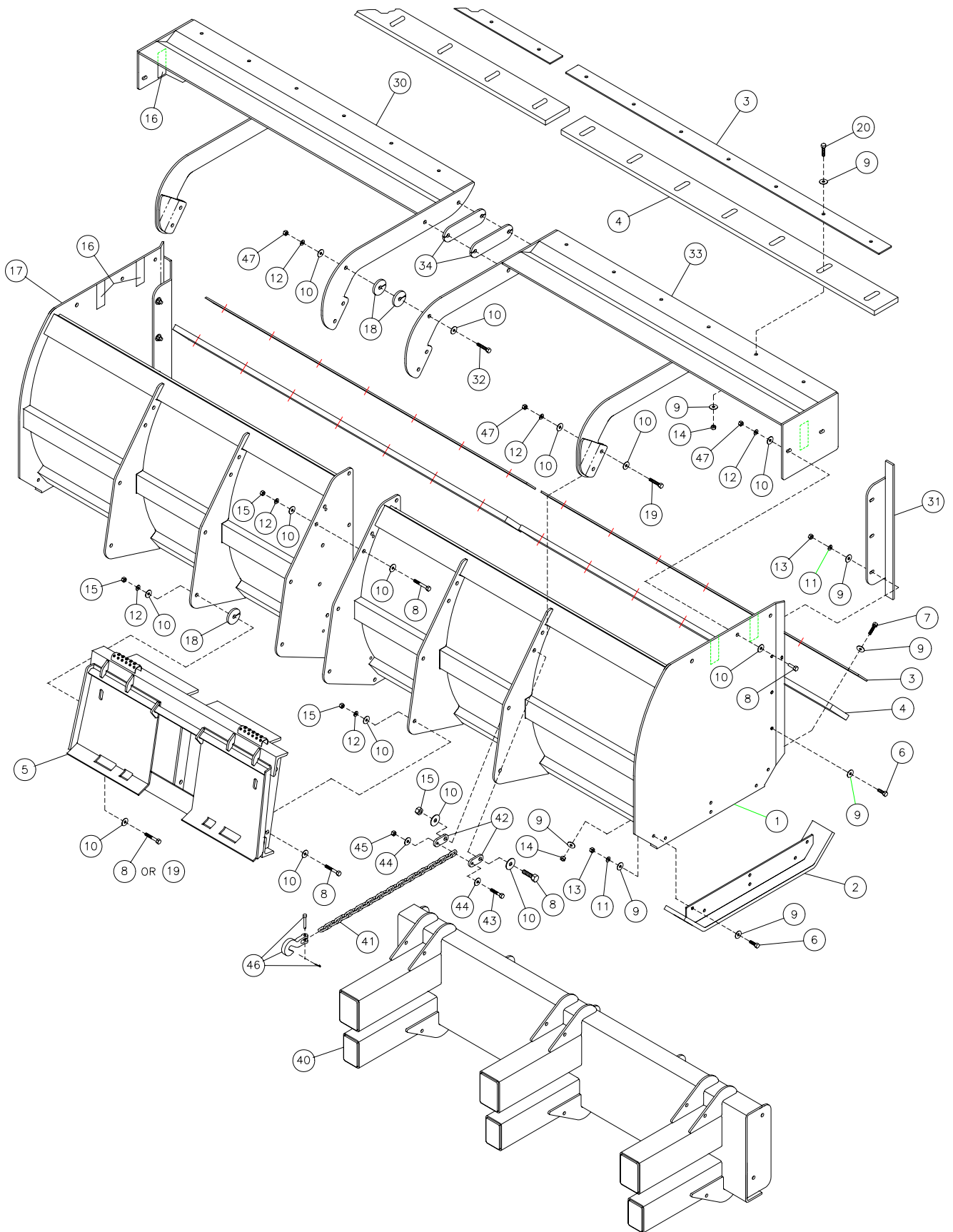
SAFETY FIRST!! READ AND UNDERSTAND THE SAFETY INSTRUCTIONS (pages 2-5 of this manual) BEFORE BEGINNING ANY SNOW PUSH STORAGE

NOTICE

Prolonged pressure on the rubber edge will deform the rubber edge and decrease the effectiveness of the scraping action.

When removing this product from your power unit, place your Snow Push such that there is no pressure on the rubber edge. Prolonged pressure on the rubber edge will deform the rubber edge and decrease the effectiveness of the scraping action.

PARTS ILLUSTRATION – LAF MODELS



SNOW PUSH PARTS LIST (6', 7', 8', & 10')

ITEM	QTY.	LAF3620 6'	LAF3619 7'	LAF3618 8'	LAF3617 10'	DESCRIPTION
1	1	LAF3625	LAF3626	LAF3623	LAF3603	Mold Board
2	2				LAF3605	Bottom Wear Shoe
3	varies		(1) LAF9407 (1) LAF9408	(2) LAF9408	(2) LAF9409	Rubber Edge Strap (3') Rubber Edge Strap (4') Rubber Edge Strap (5') Rubber Edge Strap (6')
		(1) LAF9410				
4	1	LAF3665	LAF3666	LAF3667	LAF3668	Rubber Edge
5	1				LAF3624 LAF3633	Loader Attachment Plate – Skid Steer Model Loader Attachment Plate – Loader Model
6	12				RHW1406	Grade 5 Hex Head Cap Screw: 1/2" x 1-3/4"
7	varies	(6)	(7)	(8)	(10) RHW1413	Grade 5 Hex Head Cap Screw: 1/2" x 3-1/2"
8	6				RHW1604	Grade 5 Hex Head Cap Screw: 5/8" x 2"
9	varies	(36)	(38)	(40)	(44) RHW5462	Grade 5 Flat Washer: 1/2", USS
10	12				RHW5662	Grade 5 Flat Washer: 5/8", USS
11	12				RHW6402	Grade 5 Lock Washer: 1/2"
12	6				RHW6602	Grade 5 Lock Washer: 5/8"
13	12				RHW7401	Grade 5 Hex Nut: 1/2"
14	varies	(6)	(7)	(8)	(10) RHW7403	Grade 5 Lock Nut; 1/2"
15	6				RHW7603	Grade 5 Lock Nut: 5/8"
16	4				RDL3132	Amber Reflective Tape (2" x 6")

NOTE: All parts are the same as the LAF3617 except for those parts numbered under other models.

SNOW PUSH PARTS LIST (12' & 14')

ITEM	QTY.	LAF3652 12'	LAF3654 14'	DESCRIPTION
1	1	LAF3656	LAF3661	Mold Board (Right)
2	2		LAF3605	Bottom Wear Shoe
3	varies		(2) LAF9407 (2) LAF9408	Rubber Edge Strap (3') Rubber Edge Strap (4') Rubber Edge Strap (6')
		(2) LAF9410		
4	2	LAF3616	LAF3660	Rubber Edge
5	1		LAF3655	Loader Attachment Plate
6	12		RHW1406	Grade 5 Hex Head Cap Screw: 1/2" x 1-3/4"
7	varies	(12)	(14) RHW1413	Grade 5 Hex Head Cap Screw: 1/2" x 3-1/2"
8	14		RHW1606	Grade 5 Hex Head Cap Screw: 5/8" x 2-1/2"
9	varies	(48)	(52) RHW5462	Grade 5 Flat Washer: 1/2", USS
10	40		RHW5662	Grade 5 Flat Washer: 5/8", USS
11	12		RHW6402	Grade 5 Lock Washer: 1/2"
12	20		RHW6602	Grade 5 Lock Washer: 5/8"
13	12		RHW7401	Grade 5 Hex Nut: 1/2"
14	varies	(12)	(14) RHW7403	Grade 5 Lock Nut; 1/2"
15	20		RHW7603	Grade 5 Lock Nut: 5/8"
16	4		RDL3132	Amber Reflective Tape (2" x 6")
17	1		LAF3662	Mold Board (Left)
18	4		LAF9436	Spacer Washer
19	6		RHW1606	Grade 5 Hex Head Cap Screw: 5/8" x 2-1/2"

NOTE: All parts are the same as the LAF3654 except for those parts numbered under LAF3652.

PULL BACK PARTS LIST (6', 7', 8', & 10')

ITEM	QTY.	LAF3613 6'	LAF3612 7'	LAF3611 8'	LAF3602 10'	DESCRIPTION
6	6				RHW1406	Grade 5 Hex Head Cap Screw: 1/2" x 1 3/4"
8	4				RHW1604	Grade 5 Hex Head Cap Screw: 5/8" x 2"
9	12				RHW5462	Grade 5 Flat Washer: 1/2", USS
10	varies	(12)	(16)	(16)	(16) RHW5662	Grade 5 Flat Washer: 5/8", USS
11	6				RHW6402	Grade 5 Lock Washer: 1/2"
12	varies	(6)	(8)	(8)	(8) RHW6602	Grade 5 Lock Washer: 5/8"
13	6				RHW7401	Grade 5 Hex Nut: 1/2"
16	2				RDL3132	Amber Reflective Tape (2" x 6")
19	varies	(2)	(4)	(4)	(4) RHW1605	Grade 5 Hex Head Cap Screw: 5/8" x 2 1/4"
30	1	LAF3627	LAF3628	LAF3621	LAF3601	Pull Back weldment
31	2				LAF3604	Side Wear Shoe
47	varies	(6)	(8)	(8)	(8) RHW7601	Grade 5 Hex Nut: 5/8"

NOTE: All parts are the same as the LAF3602 except for those parts numbered under other models.

PULL BACK PARTS LIST (12' & 14')

ITEM	QTY.	LAF3651 12'	LAF3653 14'	DESCRIPTION
6	6		RHW1406	Grade 5 Hex Head Cap Screw: 1/2" x 1 3/4"
8	4		RHW1604	Grade 5 Hex Head Cap Screw: 5/8" x 2"
9	12		RHW5462	Grade 5 Flat Washer: 1/2", USS
10	22		RHW5662	Grade 5 Flat Washer: 5/8", USS
11	6		RHW6402	Grade 5 Lock Washer: 1/2"
12	11		RHW6602	Grade 5 Lock Washer: 5/8"
13	6		RHW7401	Grade 5 Hex Nut: 1/2"
16	4		RDL3132	Amber Reflective Tape (2" x 6")
18	2		LAF9436	Spacer Washer
19	4		RHW1605	Grade 5 Hex Head Cap Screw: 5/8" x 2 1/4"
30	1	LAF3658	LAF3664	Pull Back weldment (left)
31	2		LAF3604	Side Wear Shoe
32	5		RHW1606	Grade 5 Hex Head Cap Screw: 5/8" x 2-1/2"
33	1	LAF3659	LAF3663	Pull Back weldment (right)
34	2		LAF9435	Spacer Plate
47	11		RHW7601	Grade 5 Hex Nut: 5/8"

NOTE: All parts are the same as the LAF3653 except for those parts numbered under LAF3651.

PULL BACK RUBBER EDGE KIT PARTS LIST (6', 7', 8', & 10')

ITEM	QTY.	LAF3632 6'	LAF3631 7'	LAF3630 8'	LAF3629 10'	DESCRIPTION
3	Varies		(1) LAF9407 (1) LAF9408	(2) LAF9408	(2) LAF9409	Rubber Edge Strap 3' Rubber Edge Strap 4' Rubber Edge Strap 5' Rubber Edge Strap 6'
		(1) LAF9410				
4	1	LAF3665	LAF3666	LAF3667	LAF3668	Rubber Edge
9	Varies	(12)	(14)	(16)	(20) RHW5462	Grade 5 Flat Washer: 1/2", USS
14	Varies	(6)	(7)	(8)	(10) RHW7403	Grade 5 Lock Nut: 1/2"
20	Varies	(6)	(7)	(8)	(10) RHW1413	Grade 5 Hex Head Cap Screw: 1/2" x 3 1/2"

NOTE: All parts are the same as the LAF3629 except for those parts numbered under other models.

PULL BACK RUBBER EDGE KIT PARTS LIST (12' & 14')

ITEM	QTY.	LAF3649 12'	LAF3650 14'	DESCRIPTION
3	Varies		(2) LAF9407 (2) LAF9408	Rubber Edge Strap 3' Rubber Edge Strap 4' Rubber Edge Strap 6'
		(2) LAF9410		
4	2	LAF3616	LAF3660	Rubber Edge
9	Varies	(24)	(28) RHW5462	Grade 5 Flat Washer: 1/2", USS
14	Varies	(12)	(14) RHW7403	Grade 5 Lock Nut: 1/2"
20	varies	(12)	(14) RHW1413	Grade 5 Hex Head Cap Screw: 1/2" x 3 1/2"

NOTE: All parts are the same as the LAF3650 except for those parts numbered under LAF3649.

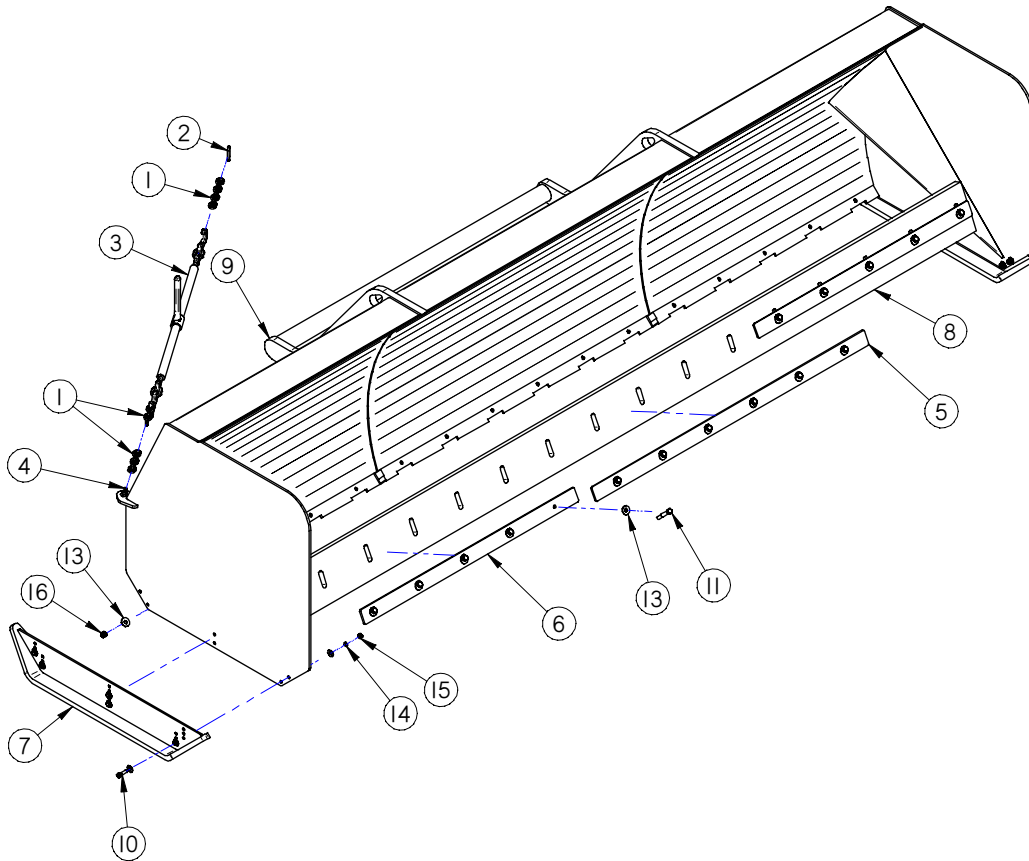
BUCKET-LIP MOUNT for 10', 12', and 14' SNOW PUSH PARTS LIST

ITEM	QTY.	LAF3617 10'	LAF3652 12'	LAF3654 14'	DESCRIPTION
8	4			RHW1604	Grade 5 Hex Head Cap Screw: 5/8" x 2"
10	8			RHW5662	Grade 5 Flat Washer: 5/8", USS
15	4			RHW7603	Grade 5 Lock Nut: 5/8"
40	1			LAF3670	Bucket Mount for Snow Push
41	4			LAF3671	Grade 40 Chain: 5/16" x 60"
42	8			LAF3672	Chain Link
43	4			RHW1241	Grade 8 Hex Head Cap Screw: 3/8" x 2"
44	8			RHW5262	Grade 5 Flat Washer: 3/8", USS
45	4			RHW7203	Grade 5 Lock Nut: 3/8"
46	4			RHW8228	Grade 40 Grab Hook: 5/16", Clevis End

PARTS ILLUSTRATION – LARGE LOADER MODELS

OPTIONAL BINDER/CHAIN KIT: PARTS LIST

ITEM	QTY.	11000	DESCRIPTION
1	176	07-6243	Chain 3/8 Bulk Gr 70 Transport
2	2	07-6445	Hook Grab Weldable 1/2" Opening
3	2	07-6446	Binder Ratchet Type w/Grab Hooks f/ 3/8 Chain
4	2	07-6447	Shackle Chain 7/16 Galv.



SNOW PUSH PARTS LIST (16', 20', & 24')

ITEM	QTY.	11016 16'	11020 20'	11024 24'	DESCRIPTION
5	1			13-50636	Rubber Edge Strap (6')
6	2	13-50637	13-51173	13-50641	Rubber Edge Strap (varies)
7	2			13-50638	Skid Shoe Weldment
8	1	13-50643	13-51166	13-50642	Rubber Edge
9	1	13-50644	13-50942	13-50606	Mold Board
10	12			RHW1406	Grade 5 Hex Head Cap Screw: 1/2" x 1 3/4"
11	varies	(16)	(20)	(24)RHW1612	Grade 5 Hex Head Cap Screw: 5/8" x 4"
12	24			RHW5462	Grade 5 Flat Washer: 1/2", USS
13	varies	(32)	(40)	(48)RHW5662	Grade 5 Flat Washer: 5/8", USS
14	12			RHW6402	Grade 5 Lock Washer: 1/2"
15	12			RHW7401	Grade 5 Hex Nut: 1/2"
16	varies	(16)	(20)	(24)RHW7602	Hex Nylock Nut: 5/8"

NOTE: All parts are the same as the 11024 except for those parts numbered under other models.

SNOW PUSH SPECIFICATIONS

Model Number	Overall Width	Overall Height	Overall Depth	Snow Push Shipping Weight	Pull Back Shipping Weight	Pull Back Rubber Edge Kit Shipping Weight
LAF3620	78"	39-1/2"	49-3/8"	914 lbs.	227 lbs.	35 lbs.
LAF3619	90"	39-1/2"	49-3/8"	966 lbs.	270 lbs.	43 lbs.
LAF3618	102"	39-1/2"	49-3/8"	1,005 lbs.	288 lbs.	50 lbs.
LAF3617	126"	39-1/2"	49-3/8"	1,145 lbs.	325 lbs.	61 lbs.
LAF3652	150"	39-1/2"	49-3/8"	1,748 lbs.	385 lbs.	70 lbs.
LAF3654	174"	39-1/2"	49-3/8"	1,918 lbs.	422 lbs.	86 lbs.
10016	16'-5-5/8"	46-7/8"	71-1/2"	2,700 lbs.	N/A	N/A
10020	20'-5-5/8"	46-7/8"	71-1/2"	3,100 lbs.	N/A	N/A
10024	24'-5-5/8"	46-7/8"	71-1/2"	3,500 lbs.	N/A	N/A

**TORQUE SPECIFICATIONS FOR STANDARD MACHINE HARDWARE
(FOR REFERENCE ONLY)**

Bolt Size	SAE Grade Bolt	Torque Ft./Lbs
3/8" - 16	5	30
1/2" - 13	5	75
5/8" - 11	5	150



PALADIN LIGHT CONSTRUCTION

Warranty Registration Form and Delivery Inspection Report

IMPORTANT! Warranty **Void** if card is not returned with 10 days.
All Applicable sections **must** be filled in.

This section to be filled out and signed by Dealer at time of delivery.

Warranty Registration

Customer's Name _____	Dealer's Name _____
Address _____	Address _____
City _____ State _____ Zip _____	City _____ State _____ Zip _____
Phone _____	CHECK ONE:
Loader / Tractor Model _____	Construction Use _____
Delivery Date _____	Agricultural Use _____
Model or Part # _____	Landscape Use _____
Serial # _____	Other: _____

Dealer Inspection *(check items applicable)*

- | | |
|---|---|
| <input type="checkbox"/> All Decals installed (see operator's manual) | <input type="checkbox"/> Review Operating and Safety Instructions |
| <input type="checkbox"/> Hydraulic fittings tight and free of leaks | <input type="checkbox"/> Guards and covers in place and secure |
| <input type="checkbox"/> Fasteners tight | <input type="checkbox"/> Does Product Function Properly |

I have thoroughly instructed the buyer on the above described equipment. This review included: The Operator's manual content, equipment care, adjustments, safe operation and applicable warranty policy.

Date _____ Dealer's Rep. signature _____

This section to be completed and signed by the customer

	1 Excellent	2 Good	3 Average	4 Unsatisfactory	5 Poor
QUALITY ASSURANCE RATING					
Question:		FFC		Local Dealer	
Quality of Product: Appearance		_____		_____	
Construction		_____		_____	
Quality of Service		_____		_____	
Value (Priced Fairly)		_____		_____	
Does it perform as claimed		_____		_____	

The above described equipment and Operator's Manual have been received by me and I have been thoroughly instructed as to care, adjustments, safe operation and applicable warranty policy.

Date: _____ Owner's signature _____

NOTE! Make one copy each for the dealer's and owner's records. Mail original to FFC Attachments.



PALADIN LIGHT CONSTRUCTION

FFC LIMITED 12 MONTH WARRANTY

Thank you for purchasing a FFC product. Warranty protection is valid only when this Warranty Registration is completed and signed by the customer and dealer, and mailed to FFC. I hereby acknowledge that I have received a copy of the owners Limited Warranty and I accept the terms therein.

For a period of 12 months from date of delivery of product to the original user, FFC, warrants each product to be free from manufacturing defects, subject to the limitations contained in this policy.

This warranty does not apply to defect caused, in whole or in part, by unreasonable use while in the possession of the user, including, but not limited to: failure to properly set up product; failure to provide reasonable and necessary maintenance; normal wear; routine tune ups or adjustments; improper handling or accidents; operation at speed or load conditions contrary to published specification; improper or insufficient lubrication; improper storage. This warranty is also not a guarantee that the performance of each product will meet the expectations of the purchaser.

FFC shall not be liable for consequential damages of any kind, including, but not limited to: consequential labor costs or transportation charges in connection with the replacement or repair of defective parts; lost time or expense which may have accrued because of said defects. In no event shall FFC, Inc.'s total liability hereunder exceed the product purchase price.

FFC makes no warranty with respect to trade accessories or any component or accessory of the product which was not manufactured by FFC, including any purchased components on any kind. These are subject to the warranties of their respective manufacturers. The warranty will be considered void if the product or any part of the product is modified or repaired in any way not expressly authorized by FFC, or if closed components are disassembled prior to return. Closed components include, but are not limited to: gearboxes, hydraulic pumps, motors, cylinders, and actuators.

Our obligation under the warranty is expressly limited, at our option, to the replacement or repair at FFC, of Lee, Illinois, or at a service facility designated by us, or such part or parts as inspection shall disclosed to have been defective. We are not responsible for unauthorized repairs or replacements. Any implied or statutory warranties, including any warranty of merchantability or fitness for a particular purpose, are expressly limited to the duration of this written warranty. We make no other express or implied warranty, nor is anyone authorized to make any in our behalf. This warranty cannot be extended, broadened, or changed except in writing by an authorized officer of FFC.