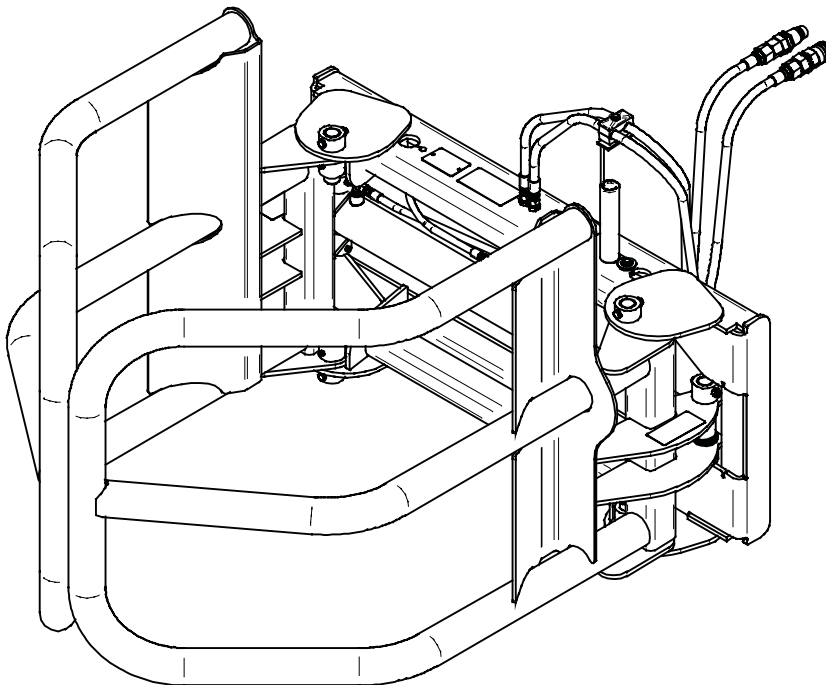




BALE SQUEEZE



PALADIN LIGHT CONSTRUCTION



SERIAL NUMBER: _____

MODEL NUMBER: _____

Manual Number: MR25616

Model: LAF1960

Date: April 7, 2006

TABLE OF CONTENTS

Introduction, General Information, Serial Number.....	1
Owner and Operator Safety Information.....	2-5
Definitions of Safety Terms and Symbols, Accident Prevention.....	2
Safety Instructions.....	3-4
Safety Signs.....	5
Power Unit Specifications, Mounting	6
Hydraulic Connections	7
Operation, Maintenance.....	8
Parts Illustration.....	9
Parts List.....	10
Specifications	11
Warranty	i

INTRODUCTION

Congratulations on your purchase of a new **FFC Bale Squeeze**. This product has been designed and built to lift, transport, and stack round or rectilinear bales of organic materials. You or any other person who will be assembling, operating, maintaining, or working with this product are required to read and completely understand the information and instructions contained in this manual. If anyone does not fully understand every part of this manual, please obtain further assistance by contacting the dealer from which this product was purchased or by contacting FFC at the telephone number or address listed on the cover of this manual. Keep this manual available for reference whenever this product is being handled or used. Provide this manual to any new owners and/or operators.

This manual covers model(s) **LAF1960**.

GENERAL INFORMATION

The purpose of this manual is to assist in assembling, mounting, operating, and maintaining your **Bale Squeeze**. Read this manual carefully to obtain valuable information and instructions that will help you achieve years of safe and dependable service.

The illustrations and data used in this manual were current at the time of printing, but due to possible engineering and/or production changes, this product may vary slightly in detail. FFC reserves the right to redesign and/or change components as may be necessary without notification to anyone.

Throughout this manual, references may be made to:

Power Unit	The engine-driven machine to which this product must be attached.
Right, Left, Front, Rear	Directions that are determined in relation to the operator of the equipment when seated in the normal operating position.
IMPORTANT NOTICE	Precautions that must be followed to prevent damage to equipment.
	Precautions that must be followed to prevent substandard performance.

SERIAL NUMBER LOCATION

Always refer to the model and serial number when ordering parts or requesting information from your dealer. The serial number plate for this product is located **on the upper left of the loader attachment weldment** of your **Bale Squeeze**.

Reference Information

Model Number _____

Loader Make _____

Serial Number _____

Loader Model _____

Date Purchased _____

Loader Serial # _____

DEFINITION OF SAFETY TERMS AND SYMBOLS

Throughout this manual, the terms **DANGER**, **WARNING**, and **CAUTION** are used to indicate the degree of hazard to personnel if proper safety procedures are not followed. These words will be used in conjunction with the Safety Alert Symbol: a dark triangle containing a white exclamation mark.



The Safety Alert Symbol means:

ATTENTION! BECOME ALERT! YOUR SAFETY IS INVOLVED!

DANGER Indicates an imminently hazardous situation, which, if not avoided,
WILL result in death or serious injury.

WARNING Indicates a potentially hazardous situation which, if not avoided,
could result in death or serious injury.

CAUTION Indicates a potentially hazardous situation which, if not avoided,
may result in minor or moderate injury;

OR

may also be used to alert against unsafe practices that may result in personal injury.

ACCIDENTS CAN BE PREVENTED WITH **YOUR HELP !**

No accident prevention program can be successful without the wholehearted cooperation of the person who is directly responsible for the operation of the equipment.

To read equipment accident reports from all over the country is to be convinced that a large number of accidents can be prevented only by operators who consistently anticipate the results of their actions and thus prevent accidents from ever occurring. No power-driven equipment, whether it is on the highway, in a farm field, or in an industrial plant, can be any safer than is allowed by the person who is at the controls.

If accidents are to be prevented (and accidents can be prevented), that prevention will come from equipment operators who accept their complete responsibility.

The designer, the manufacturer, and the safety engineer all help create a safe product, but the operator of that product can wipe out their combined efforts with a single careless act.

The best safety device is a careful operator. FFC and your dealer ask that **YOU** be that careful, responsible equipment operator.

YOU ARE THE KEY TO SAFETY BECAUSE:

YOU are responsible for the SAFE operation and maintenance of **YOUR** Bale Squeeze.

YOU are responsible to familiarize yourself, and anyone else who will assemble, operate, maintain, or work around this product, with the SAFETY information contained in this manual.

YOU are responsible to read ALL information contained in this manual to any operators or maintenance personnel who are not fully able to read the written English language. Whether **YOU** read the manual as written or translate it into another language, **YOU** must make certain that all operators and maintenance personnel have a complete understanding of the full and exact contents of this manual. Translations of this manual into other languages are available by submitting an order to FFC.

YOU can reduce the risk of injury or death by following all safety precautions and by using good safety practices.

SAFETY INSTRUCTIONS

WORK SAFELY - A CAREFUL OPERATOR IS THE BEST INSURANCE AGAINST ACCIDENTS !!

WARNING SECTION



WARNING

Obey all the safety instructions listed in this section and throughout this manual. Failure to obey instructions in this section could result in death or serious injury.

BEFORE ATTEMPTING ANY TYPE OF ASSEMBLY, OPERATION, MAINTENANCE, OR OTHER WORK ON OR NEAR THIS PRODUCT:

- **READ AND COMPLETELY UNDERSTAND THIS MANUAL.**
- **READ AND COMPLETELY UNDERSTAND THE MANUALS PROVIDED WITH YOUR *power unit, loader, and quick-attach.***
- Read and understand all safety signs on this product and on your power unit, loader, and quick-attach.
- Know all your controls and know how to quickly stop all power unit movement, the Bale Squeeze movement, and the engine in case of an emergency.
- Know and obey all applicable government rules, O.S.H.A. regulations, local laws and other professional guidelines for your operation.
- Make sure that anyone who will be assembling, mounting, maintaining, repairing, removing, and/or storing this product:
 - has been instructed in the safe operation of this product and of the power unit, loader, and quick-attach to which this product is attached.
 - is physically and mentally capable of the safe operation of this type of equipment.
 - is not under the influence of drugs or alcohol.
 - is carefully supervised from a safe distance, especially if such person is inexperienced.
 - wears appropriate protective equipment (i.e. hardhat, safety glasses, work gloves, protective shoes, respirator, ear protection, etc.).
 - does not wear loose fitting clothing, loose or uncovered hair, or any accessories (jewelry, necktie, scarf, wrist watch, etc.) that can catch in moving parts.
 - has annually reviewed all safety instructions.
- Know and follow good work practices when assembling, mounting, maintaining, repairing, removing, and storing this product:
 - Work on a level surface in a well-lit area.
 - Keep the area clean and dry.

- Use properly grounded electrical outlets & tools.
- Use the right tool for the job at hand.
- Make sure that your tools are in good condition for performing the desired function.
- When using tools, wear the protective equipment specified by the tool manufacturer. (i.e. hardhat, safety glasses, work gloves, protective shoes, etc.)

WHEN YOUR POWER UNIT IS USED DURING ANY TYPE OF ASSEMBLY, OPERATION, MAINTENANCE, OR OTHER WORK ON OR NEAR THIS PRODUCT:

- Before leaving the operator's station or before beginning any type of work on this product, lower this product to the ground, apply your power unit's parking brake, stop the engine, remove the starter key, wait for all moving parts to stop, and then relieve all pressure in the hydraulic lines. Refer to your power unit's operator's manual for instructions on how to relieve hydraulic pressure in lines.
- Know your loader's safe lifting and operating capacity and the weight of this product. See the specifications in this manual for the weight of this product and refer to your power unit's and your loader's operator's manuals for safe operating limits. Lift capacity may be reduced if using a quick-attach.
- Never allow anyone, except the operator, to be around the power unit or this product when either is in motion. Do not startup unless others are clear of the work area [minimum of 10 feet from the pivoting arms when closed].
- Do not allow riders on this product or the power unit.
- Do not stand or climb on this product when raised.
- Do not place any part of your body under any part of this product unless this product is securely resting on adequate blocking or on the ground.
- Do not use blocking made of concrete blocks, logs, buckets, barrels or any other material that could suddenly collapse or shift positions. Do not use wood or steel blocking that shows any signs of material decay. Do not use blocking that is warped, twisted, or tapered.
- Never operate controls from the ground. Operate the controls only from the operator's station.
- Never leave equipment unattended with the engine running or with this product raised on the loader.
- Be aware of the added weight and width of this product. Reduce travel speeds accordingly, especially when traveling over rough ground.
- Keep this product close to the ground and under control when transporting.

SAFETY INSTRUCTIONS

WORK SAFELY - A CAREFUL OPERATOR IS THE BEST INSURANCE AGAINST ACCIDENTS !!

WARNING SECTION (CONTINUED)



WARNING

Obey all the safety instructions listed in this section and throughout this manual. Failure to obey instructions in this section could result in death or serious injury.

WHEN DEALING WITH HYDRAULICS DURING ANY TYPE OF ASSEMBLY, OPERATION, MAINTENANCE, OR OTHER WORK ON OR NEAR THIS PRODUCT:

- Hydraulic fluid under pressure can penetrate the skin and cause serious injury or death. Hydraulic leaks under pressure may not be visible!
- If any fluid penetrates the skin, **GET IMMEDIATE MEDICAL ATTENTION!!**
- Wear safety glasses, protective clothing, and use a sound piece of cardboard or wood when searching for hydraulic leaks. **DO NOT USE YOUR HANDS!**
- Before connecting or disconnecting hydraulic hoses, read your power unit's operator's manual for detailed instructions on connecting and disconnecting hydraulic attachments.
- Make certain that all parts meet the specifications for this product when installing or replacing hydraulic hoses or fittings.
- After connecting hydraulic lines:
 - Slowly and carefully raise the loader and cycle the rollback / dump cylinders to check hose clearances and to check for any interference.
 - Operate the hydraulics on this product to check hose clearances and to check for any interference.
 - Make certain that the hoses cannot interfere with or actuate the quick-attach mechanism.
 - Make certain that hoses will not be pinched, or get tangled, in any equipment.
- Do not lock the auxiliary hydraulics of your *tractor or power unit* in the "ON" position.
- Refer to your power unit's operator's manual and this manual for procedures and intervals, then inspect and maintain the entire hydraulic system to insure that the fluid remains clean, that all devices function properly, and that there are no fluid leaks.

WHEN MOUNTING THIS PRODUCT TO YOUR POWER UNIT:

- Refer to the operator's manuals of your power unit, your loader, and your quick-attach for special or detailed mounting instructions.
- This product should fit onto the quick-attach or loader arms of your power unit the same as the original products that were designed by your loader / quick-attach manufacturer.
- If this product does not fit properly, contact FFC before operating.
- Never place your finger into the mounting plate or loader holes. A slight movement of the power unit or this product could cause serious injury.

BEFORE EACH USE, THOROUGHLY INSPECT THIS PRODUCT AND:

- Make certain that all safety signs are in place and legible. Refer to the safety sign page in this manual for the placement of safety signs for this product.
- Replace all damaged or excessively worn parts and hardware only with genuine FFC parts or with properly rated fasteners, hydraulic hoses, or fittings.
- Make certain that all locking pins, latches, and connection devices are properly installed and secured.
- Make certain that all protective guards, canopies, doors, etc. are in place and secure.

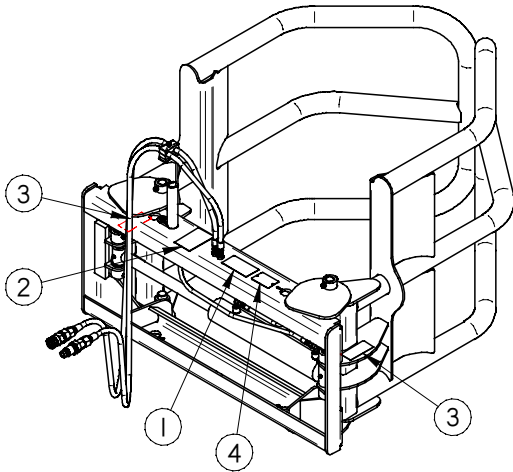
WHEN OPERATING THIS PRODUCT IN ACCORDANCE WITH DESIGN INTENTIONS:

- **NEVER HANDLE MORE THAN ONE BALE AT A TIME!**
- Do not fully raise the loader and roll back this product. The bale could slip out of the grasp of the squeeze arms and fall on the operator or a bystander.
- When the power unit is moving forward, do not hydraulically change the squeeze arms. The bale could fall in the path of the tractor and could cause loss of control or tipping of the power unit.

WHEN ADJUSTING, SERVICING OR REPAIRING THIS PRODUCT:

- Make no modifications to your Bale Squeeze.
- When making repairs, use only genuine FFC parts or, for fasteners, hydraulic hoses, or hydraulic fittings, use only properly rated parts.
- Replacement parts, for parts with safety signs attached, must also have safety signs attached.

SAFETY SIGN LOCATIONS



ITEM	QTY.	PART # - DESCRIPTION
1	1	50-0723-Read Manual
2	1	50-0724-Hydraulics
3	2	50-0737-Pinch Point
4	1	RDL3254-Serial Number

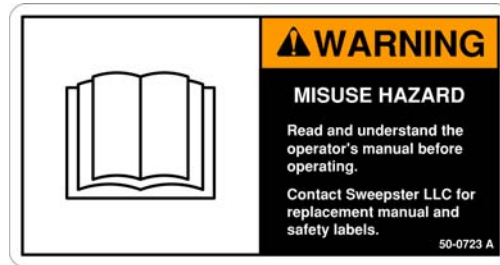
INSTRUCTIONS

- Keep all safety signs clean and legible.
- Replace all missing, illegible, or damaged safety signs.
- Replacement parts for parts with safety signs attached must also have safety signs attached.
- Safety signs are available, free of charge, from your dealer or from FFC.

PLACEMENT OR REPLACEMENT OF SAFETY SIGNS

1. Clean the area of application with non-flammable solvent, and then wash the same area with soap and water.
2. Allow the surface to fully dry.
3. Remove the backing from the safety sign, exposing the adhesive surface.
4. Apply the safety sign to the position shown in the diagram above and smooth out any bubbles.

ITEM 1



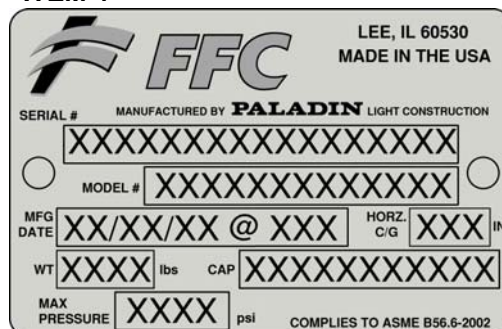
ITEM 2



ITEM 3



ITEM 4



POWER UNIT SPECIFICATIONS

IMPORTANT

Exceeding any of the maximum recommended power unit specifications **CAN** result in damage to this product and **WILL** void all FFC warranties.

DESCRIPTION	SPECIFICATIONS
Operating Capacity of Power Unit's loader	5,000 lbs. maximum
Lift Capacity of Power Unit's loader	10,000 lbs. maximum
Hydraulic Pressure Output	3,000 psi. maximum
Rear Ballast	As required to maintain full power unit stability. (Note the Shipping Weight on page 11, then see the operator's manual(s) for your power unit, loader, and quick-attach for ballasting needs.)

BALE SQUEEZE MOUNTING



SAFETY FIRST!! READ AND UNDERSTAND THE SAFETY INSTRUCTIONS (pages 2-5 of this manual) BEFORE BEGINNING ANY BALE SQUEEZE MOUNTING

1. Place this product on a firm, level surface that is large enough to safely accommodate this product, your power unit and all workers involved in the mounting process.
2. Refer to the operator's manual(s) for your power unit, loader, and quick-attach and follow the mounting instructions contained therein.
3. Carefully raise the loader and cycle the tilt cylinders to check clearances and to verify that all mounting procedures have been successfully completed.
4. **IMPORTANT** Lubricate all grease fittings before connecting this product to your power unit's hydraulic system. Refer to **BALE SQUEEZE MAINTENANCE** on page 8 and follow the instructions.

BALE SQUEEZE HYDRAULIC CONNECTION



SAFETY FIRST!! READ AND UNDERSTAND THE SAFETY INSTRUCTIONS (pages 2-5 of this manual) BEFORE BEGINNING ANY BALE SQUEEZE HYDRAULIC CONNECTION

1. You must purchase and install two hydraulic hoses that have fittings permanently attached to each end. These hoses and fittings must meet the following specifications: (NOTE: If your Bale Squeeze was supplied with hoses, skip to step 4.)
 - Inside Diameter:..... 0.375" (3/8")
 - Minimum Operating Pressure:..... 3,500 psi.
 - Hose End Fittings:..... One hose end must be a #6 female JIC fitting. The fitting for the other end can be whatever you determine to be the most beneficial to making the connection to your power unit.
 - Length:..... You must make this determination based upon recommendations provided in your power unit's operator's manual. The hoses must be long enough to avoid applying any tension to them (i.e. stretching) in all operating positions of this product. The hoses must not be excessively long either, because this could cause the hoses to drag on the ground, be pinched in the equipment, become entangled in moving parts, etc., any of which will shorten the life of the hose and could cause injury to the operator or others near the equipment.
2. Remove all the protective plastic caps from the hose ends and this product's connection fittings.
3. Make certain that the male and female threads, as well as the inside of the hoses, are clean, then place the #6 hose ends onto the fittings on this product and tighten to 27 ft. lbs., + or - 2.0 ft. lbs. (#6 is 9/16" dia. with 18 tpi.)
4. Make the connection to your power unit using the appropriate method below for your power unit:
 - If your power unit has male or female threads for connecting the hydraulic hoses to the auxiliary hydraulic lines, make certain that the threads, as well as the inside of the fittings and hoses, are clean, then secure the hoses to the fittings using the torque specified in your power unit's operator's manual.
 - If your power unit has quick-couplers for connecting the hydraulic hoses to the auxiliary hydraulic lines, you may need to purchase the proper quick-coupler fittings that you must install on the free ends of the two hoses. In most cases, the owner's manual for your power unit will describe the exact type of fitting that is needed for your hydraulic coupling system, but in no case should any fitting have an allowable operating pressure of less than 3,500 psi. Once all the quick-coupler fittings are properly installed, then the hoses can be coupled to the power unit's hydraulic valve body or auxiliary hydraulic lines as per the instructions found in your power unit's operator's manual.
5. Carefully raise the loader and cycle the tilt cylinders to check hose clearances and to check for any interference. Operate the hydraulic cylinder(s) on this product to make the same checks.
6. Cycle the hydraulic cylinder(s) on this product several times from fully retracted to fully extended until all air has been completely removed from the cylinder(s).

NOTICE: When shipped, the hydraulic cylinder(s) on this product contained air or an air-fluid mixture. Also, there are orifices beneath the port(s) in the hydraulic cylinder barrel(s) that will restrict the exit of that air. Failure to remove all the air from the hydraulic cylinder(s) can cause uneven, jerky cylinder movement when the hydraulic controls are being operated and unwanted cylinder movement when those controls are not being operated.

BALE SQUEEZE OPERATION



SAFETY FIRST!! READ AND UNDERSTAND THE SAFETY INSTRUCTIONS (pages 2-5 of this manual) BEFORE BEGINNING ANY BALE SQUEEZE OPERATION

WARNING

Failure to obey the following procedures could result in death or serious injury.



- Never handle more than one [1] bale at a time.
- Do not fully raise the loader and roll back this product.
- When the power unit is moving forward, do not hydraulically change the pivoting arms. The bale could fall in the path of the power unit and cause loss of control or tipping of the power unit.

IMPORTANT

Using this product to lift any inorganic objects **CAN** result in damage to this product and **WILL** void all FFC warranties.

IMPORTANT

Lifting more than 2,400 pounds of bales **CAN** result in damage to this product and **WILL** void all FFC warranties.

POSITIONING THE BALE

1. Approach the bale so that the pivoting arms will contact the bale slightly below center and the mainframe just touches the bale.
2. Hydraulically bring the pivoting arms in using the full hydraulic capacity of your power unit.
3. Roll back and lift the bale slightly to make sure that the bale is secure. If the bale appears to be unstable, lower the bale, and reposition the squeeze arms to achieve full stability. Repeat steps 2 and 3 until full stability is achieved.

TRANSPORTING THE BALE

1. Raise the bale to the **minimum** height required for the terrain that must be crossed with the bale.
2. Operate the power unit so that:
 - the bale always remains close to the ground,
 - accelerating, turning, and braking are done very gradually,
 - and any obstacles, bumps, or holes in your intended path are avoided.
3. Maintain visual contact with the bale to make sure that the bale remains stable.

BALE SQUEEZE MAINTENANCE



SAFETY FIRST!! READ AND UNDERSTAND THE SAFETY INSTRUCTIONS (pages 2-5 of this manual) BEFORE BEGINNING ANY BALE SQUEEZE MAINTENANCE

BEFORE EACH USE

- Make sure that all nuts and bolts are in place and properly tightened.
- Make sure that all other fasteners are in place and are performing their specified function.
- Make sure that all hydraulic fittings are tightened to specifications and that there are no leaks in any fittings or hoses. (SEE THE HYDRAULIC CONNECTION SECTION ON PAGE 7.)
- Make sure that all safety signs are in place, are clean, and are legible. (SEE THE SAFETY SIGN SECTION ON PAGE 5.)
- Replace any damaged parts and excessively worn parts.

AFTER EVERY 10 HOURS OF USE

- Grease 6 fittings: two on each pivoting arm weldment and 1 on each end of the cylinder.

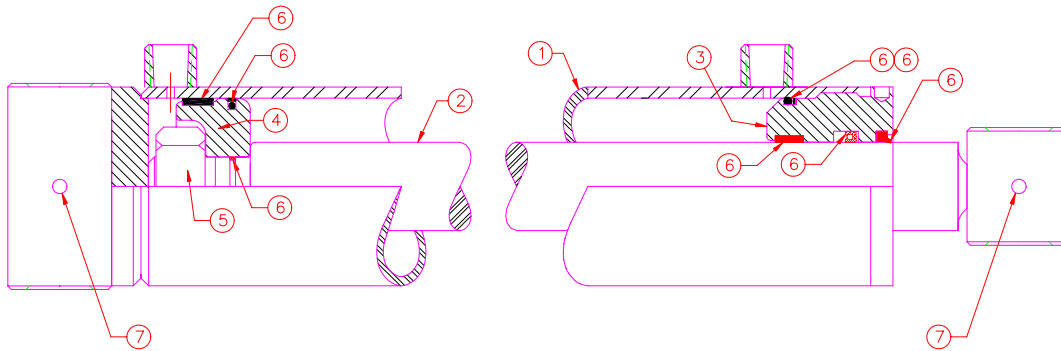
BALE SQUEEZE PARTS LIST

LAF1960			
ITEM	QTY.		DESCRIPTION
1	1	13-51990	Left Arm Weldment
2	1	13-51991	Right Arm Weldment
3	2	LAF3098	Cylinder Pin 1-1/4" x 7-5/8"
4	1	LAF4044	Hydraulic Cylinder 3" x 16"
5	2	LAF4098	Jam Nut #6 Hydraulic Fitting (9/16" Dia. X 18 TPI)
6	2	LAF4157	Bulkhead Fitting 90° #6MJ - 6MJ without nut
7	1	Contact FFC	Hydraulic Hose Quick Coupler: Female Connection
8	1	Contact FFC	Hydraulic Hose Quick Coupler: Male Connection
9	2	Contact FFC	Adapter [not required for all models]
10	2	LAF4298	Hydraulic Elbow: 90° #6 Male JIC x #6 Male O-Ring w/boss
11	2	Contact FFC	Hydraulic Hose: 3/8" I.D. (1) #6 Female JIC & (1) Other Fitting
12	2	LAF4388	Hydraulic Hose 1/4" 6FJ – 6FJ, 28-1/2" Long
13	1	LAF9438	Loader Attachment Weldment [Mainframe]
14	4	LAF9614	Pivot Pin 1-1/4" x 4-1/2"
15	1	RHW1107	Hex Head Cap Screw 5/16" dia. X 1-1/4" Long, Grade 5 Not required for all models
16	1	RHW1112	Hex Head Cap Screw 5/16" dia. X 2-1/2" Long, Grade 5 Not required for all models
17	6	RHW1213	Hex Head Cap Screw 3/8" dia. X 2-1/2" Long, Grade 5
18	2	RHW5162	Flat Washer, 5/16", Grade 5 Not required for all models
19	8	RHW5972	Machine Bushing 1-1/4" ID – 1-7/8" OD
20	1	RHW7103	Center Dent Lock Nut, 5/16", Grade 5 Not required for all models
21	6	RHW7203	Center Dent Lock Nut, 3/8", Grade 5
22	4	RHW8090	Grease Zerk, 1/4"
23	1	RHW8098	Fender Washer, 5/16 x 1-1/2", Grade 2 Not required for all models
24	1	RHW8613	Weld Plate Not required for all models
25	1	RHW8614	Cover Plate Not required for all models
26	1	RHW8616	Hose Cradle Set Not required for all models
27	1	RHW8618	Hose Spring Not required for all models

Hydraulic Cylinder Parts List

Item	QTY	Part No.	DESCRIPTION
NUMBERS FROM HYDRAULIC CYLINDER ILLUSTRATION: LAF4044			
1	1	LAF4162	Barrel: 3" I.D. X 16" Stroke With Cross Tube End
2	1	LAF4163	Shaft: 1-1/2" Dia. With Cross Tube End
3	1	LAF4102	Head: 1-1/2" I.D., Nominal
4	1	LAF4103	Piston: 3" O.D. X 1-1/2" I.D., Nominal
5	1	LAF4104	Nut: 1" Dia., 14 TPI, Grade 8
6	1	LAF4005	Seal Kit (Includes All Seals, O-Rings, Etc.)
7	2	RHW8090	Grease Zerks

HYDRAULIC CYLINDER ILLUSTRATION



BALE SQUEEZE SPECIFICATIONS

Model Number	Overall Width	Overall Height	Overall Depth	Shipping Weight
LAF1960	47-1/2"	37-1/2"	54"	480 lbs.
All replacement hydraulic hoses and fittings must have a minimum rated working pressure of 3,000 psi.				



PALADIN LIGHT CONSTRUCTION

Warranty Registration Form and Delivery Inspection Report

IMPORTANT! Warranty **Void** if card is not returned with 10 days.
All Applicable sections **must** be filled in.

This section to be filled out and signed by Dealer at time of delivery.

Warranty Registration

Customer's Name _____	Dealer's Name _____
Address _____	Address _____
City _____ State _____ Zip _____	City _____ State _____ Zip _____
Phone _____	CHECK ONE:
Loader / Tractor Model _____	Construction Use _____
Delivery Date _____	Agricultural Use _____
Model or Part # _____	Landscape Use _____
Serial # _____	Other: _____

Dealer Inspection *(check items applicable)*

- | | |
|---|---|
| <input type="checkbox"/> All Decals installed (see operator's manual) | <input type="checkbox"/> Review Operating and Safety Instructions |
| <input type="checkbox"/> Hydraulic fittings tight and free of leaks | <input type="checkbox"/> Guards and covers in place and secure |
| <input type="checkbox"/> Fasteners tight | <input type="checkbox"/> Does Product Function Properly |

I have thoroughly instructed the buyer on the above described equipment. This review included: The Operator's manual content, equipment care, adjustments, safe operation and applicable warranty policy.

Date _____ Dealer's Rep. signature _____

This section to be completed and signed by the customer

	1 Excellent	2 Good	3 Average	4 Unsatisfactory	5 Poor
QUALITY ASSURANCE RATING					
Question:					
Quality of Product: Appearance					
Construction					
Quality of Service					
Value (Priced Fairly)					
Does it perform as claimed					

The above described equipment and Operator's Manual have been received by me and I have been thoroughly instructed as to care, adjustments, safe operation and applicable warranty policy.

Date: _____ Owner's signature _____

NOTE! Make one copy each for the dealer's and owner's records. Mail original to FFC Attachments.



PALADIN LIGHT CONSTRUCTION

FFC LIMITED 12 MONTH WARRANTY

Thank you for purchasing a FFC product. Warranty protection is valid only when this Warranty Registration is completed and signed by the customer and dealer, and mailed to FFC. I hereby acknowledge that I have received a copy of the owners Limited Warranty and I accept the terms therein.

For a period of 12 months from date of delivery of product to the original user, FFC, warrants each product to be free from manufacturing defects, subject to the limitations contained in this policy.

This warranty does not apply to defect caused, in whole or in part, by unreasonable use while in the possession of the user, including, but not limited to: failure to properly set up product; failure to provide reasonable and necessary maintenance; normal wear; routine tune ups or adjustments; improper handling or accidents; operation at speed or load conditions contrary to published specification; improper or insufficient lubrication; improper storage. This warranty is also not a guarantee that the performance of each product will meet the expectations of the purchaser.

FFC shall not be liable for consequential damages of any kind, including, but not limited to: consequential labor costs or transportation charges in connection with the replacement or repair of defective parts; lost time or expense which may have accrued because of said defects. In no event shall FFC, Inc.'s total liability hereunder exceed the product purchase price.

FFC makes no warranty with respect to trade accessories or any component or accessory of the product which was not manufactured by FFC, including any purchased components on any kind. These are subject to the warranties of their respective manufacturers. The warranty will be considered void if the product or any part of the product is modified or repaired in any way not expressly authorized by FFC, or if closed components are disassembled prior to return. Closed components include, but are not limited to: gearboxes, hydraulic pumps, motors, cylinders, and actuators.

Our obligation under the warranty is expressly limited, at our option, to the replacement or repair at FFC, of Lee, Illinois, or at a service facility designated by us, or such part or parts as inspection shall disclosed to have been defective. We are not responsible for unauthorized repairs or replacements. Any implied or statutory warranties, including any warranty of merchantability or fitness for a particular purpose, are expressly limited to the duration of this written warranty. We make no other express or implied warranty, nor is anyone authorized to make any in our behalf. This warranty cannot be extended, broadened, or changed except in writing by an authorized officer of FFC.