



OPERATOR'S & PARTS MANUAL ADAPTER



PALADIN LIGHT CONSTRUCTION



SERIAL NUMBER: _____

MODEL NUMBER: _____

Manual Number: 76319

Part Number: 76319

Rev:

TABLE OF CONTENTS

PREFACE	3
SAFETY PRECAUTIONS	4-7
SAFETY STATEMENTS	4
GENERAL SAFETY PRECAUTIONS.....	5-6
EQUIPMENT SAFETY PRECAUTIONS	7
INSTALLATION AND OPERATION	9
ADAPTER COMPATIBILITY	9
BLANK (WELD-ON) ADAPTERS	9
BOLT-ON UNIVERSAL ADAPTERS.....	9
UNIVERSAL ADAPTERS	9
BOLT TORQUE	10
STORAGE	11
LIMITED WARRANTY	12
PARTS	
<u>WELD-ON ADAPTERS</u>	14-25
ADAPTER BLANK ASSEMBLY #11599	14
ADAPTER BLANK ASSEMBLY #11601	15
ADAPTER BLANK ASSEMBLY #12066	16
ADAPTER BLANK ASSEMBLY #12067	17
ADAPTER BLANK ASSEMBLY #12068.....	18
ADAPTER BLANK ASSEMBLY #12069	19
ADAPTER BLANK ASSEMBLY #12072.....	20
ADAPTER BLANK ASSEMBLY #12074.....	21
ADAPTER BLANK ASSEMBLY #12076	22
ADAPTER BLANK ASSEMBLY #12246.....	23
ADAPTER BLANK ASSEMBLY #12325.....	24
ADAPTER BLANK ASSEMBLY #12608.....	25
<u>ADAPTER (MANITOU TO JOHN DEERE)</u>	27
MANITOU TO JOHN DEERE ASSEMBLY #13051	27
<u>BOLT-ON UNIVERSAL ADAPTERS</u>	28-29
BOLT-ON UNIVERSAL ADAPTER ASSEMBLY #12532	28
BOLT-ON UNIVERSAL ADAPTER ASSEMBLY #33670	29
<u>WELD-ON UNIVERSAL ADAPTER</u>	30-31
WELD-ON UNIVERSAL ADAPTER ASSEMBLY #12626.....	30-31
<u>UNIVERSAL ADAPTERS</u>	32-53
UNIVERSAL ADAPTER ASSEMBLY #11634	32-33
UNIVERSAL ADAPTER ASSEMBLY #11684.....	34-35
UNIVERSAL ADAPTER ASSEMBLY #12193.....	36-37
UNIVERSAL ADAPTER ASSEMBLY #12492.....	38-39
UNIVERSAL ADAPTER ASSEMBLY #12670.....	40-41
UNIVERSAL ADAPTER ASSEMBLY #12712.....	42-43
UNIVERSAL ADAPTER ASSEMBLY #12716.....	44-45
UNIVERSAL ADAPTER ASSEMBLY #12760.....	46-47
UNIVERSAL ADAPTER ASSEMBLY #14820.....	48-49
UNIVERSAL ADAPTER ASSEMBLY #15002.....	50-51
UNIVERSAL ADAPTER ASSEMBLY #17176.....	52-53

PREFACE

GENERAL COMMENTS

Congratulations on the purchase of your new attachment! This product was carefully designed and manufactured to give you many years of dependable service. Only minor maintenance, such as cleaning and lubricating, is required to keep it in top working condition. Be sure to observe all maintenance procedures and safety precautions in this manual and on any safety decals located on the product, and on any equipment on which the attachment is mounted. Also, check load charts before operating the attachment.

This manual has been designed to help you do a better, safer job. Read this manual carefully and become familiar with its contents.

WARNING! Never let anyone operate this unit without reading the “Safety Precautions” and “Operating Instructions” sections of this manual.



Always choose hard, level ground to park the vehicle on, and set the brake so the unit cannot roll.

Unless noted otherwise, right and left sides are determined from the operator’s control position when facing the attachment.

NOTE: The illustrations and data used in this manual were current, according to the information available to us at the time of printing. However, we reserve the right to redesign and change the attachment as may be necessary, without notification.

BEFORE OPERATION

The primary responsibility for safety with this equipment falls to the operator. Make sure the equipment is operated only by trained individuals who have read and understand this manual. If there is any portion of this manual or function that you do not understand, contact your local authorized dealer or the manufacturer.

SAFETY ALERT SYMBOL



This is the “Safety Alert Symbol” used by this industry. This symbol is used to warn of possible injury. Be sure to read all warnings carefully. They are included for your safety and for the safety of others working with you.

SERVICE

When servicing your product, remember to use only manufacturer replacement parts. Substitute parts may not meet the standards required for safe, dependable operation.

To facilitate parts ordering, record the model and serial number of your unit in the space provided on the cover of this manual. This information may be obtained from the identification plate located on the product.

The parts department needs this information to ensure that you receive the correct parts for your specific model.

SAFETY STATEMENTS



THIS SYMBOL BY ITSELF OR WITH A WARNING WORD THROUGHOUT THIS MANUAL IS USED TO CALL YOUR ATTENTION TO INSTRUCTIONS INVOLVING YOUR PERSONAL SAFETY OR THE SAFETY OF OTHERS. FAILURE TO FOLLOW THESE INSTRUCTIONS CAN RESULT IN INJURY OR DEATH.



DANGER

THIS SIGNAL WORD IS USED WHERE SERIOUS INJURY OR DEATH WILL RESULT IF THE INSTRUCTIONS ARE NOT FOLLOWED PROPERLY.



WARNING

THIS SIGNAL WORD IS USED WHERE SERIOUS INJURY OR DEATH COULD RESULT IF THE INSTRUCTIONS ARE NOT FOLLOWED PROPERLY.



CAUTION

THIS SIGNAL WORD IS USED WHERE MINOR INJURY COULD RESULT IF THE INSTRUCTIONS ARE NOT FOLLOWED PROPERLY.

NOTICE

NOTICE INDICATES A PROPERTY DAMAGE MESSAGE.

GENERAL SAFETY PRECAUTIONS

WARNING!

READ MANUAL PRIOR TO INSTALLATION



Improper installation, operation, or maintenance of this equipment could result in serious injury or death. Operators and maintenance personnel should read this manual, as well as all manuals related to this equipment and the prime mover thoroughly before beginning installation, operation, or maintenance. **FOLLOW ALL SAFETY INSTRUCTIONS IN THIS MANUAL AND THE PRIME MOVER'S MANUAL(S).**



READ AND UNDERSTAND ALL SAFETY STATEMENTS

Read all safety decals and safety statements in all manuals prior to operating or working on this equipment. Know and obey all OSHA regulations, local laws, and other professional guidelines for your operation. Know and follow good work practices when assembling, maintaining, repairing, mounting, removing, or operating this equipment.



KNOW YOUR EQUIPMENT

Know your equipment's capabilities, dimensions, and operations before operating. Visually inspect your equipment before you start, and never operate equipment that is not in proper working order with all safety devices intact. Check all hardware to ensure it is tight. Make certain that all locking pins, latches, and connection devices are properly installed and secured. Remove and replace any damaged, fatigued, or excessively worn parts. Make certain all safety decals are in place and are legible. Keep decals clean, and replace them if they become worn or hard to read.

M-806 7-28-05-2

GENERAL SAFETY PRECAUTIONS

WARNING!



PROTECT AGAINST FLYING DEBRIS

Always wear proper safety glasses, goggles, or a face shield when driving pins in or out, or when any operation causes dust, flying debris, or any other hazardous material.

WARNING!



LOWER OR SUPPORT RAISED EQUIPMENT

Do not work under raised booms without supporting them. Do not use support material made of concrete blocks, logs, buckets, barrels, or any other material that could suddenly collapse or shift positions. Make sure support material is solid, not decayed, warped, twisted, or tapered. Lower booms to ground level or on blocks. Lower booms and attachments to the ground before leaving the cab or operator's station.

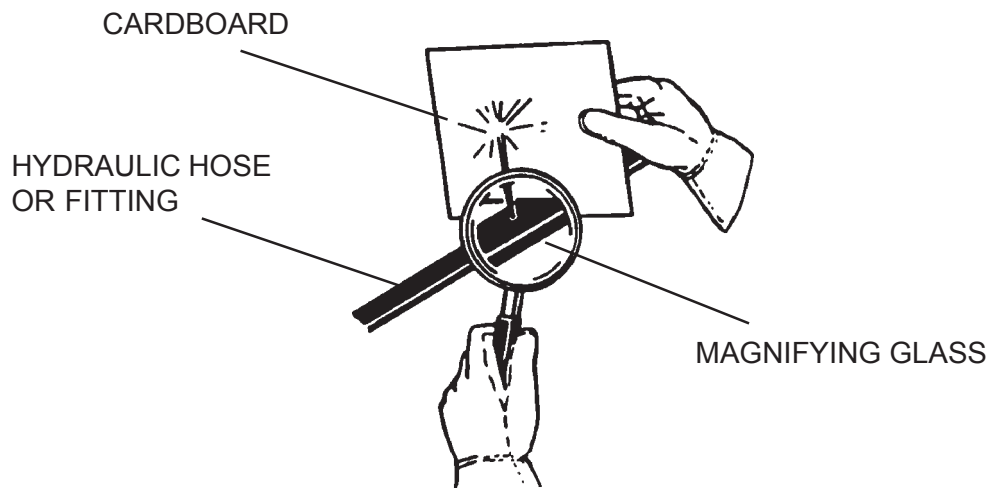
WARNING!



USE CARE WITH HYDRAULIC FLUID PRESSURE

Hydraulic fluid under pressure can penetrate the skin and cause serious injury or death. Hydraulic leaks under pressure may not be visible. Before connecting or disconnecting hydraulic hoses, read your prime mover's operator's manual for detailed instructions on connecting and disconnecting hydraulic hoses or fittings.

- Keep unprotected body parts, such as face, eyes, and arms as far away as possible from a suspected leak. Flesh injected with hydraulic fluid may develop gangrene or other permanent disabilities.
- If injured by injected fluid, see a doctor at once. If your doctor is not familiar with this type of injury, ask him to research it immediately to determine proper treatment.
- Wear safety glasses, protective clothing, and use a piece of cardboard or wood when searching for hydraulic leaks. **DO NOT USE YOUR HANDS! SEE ILLUSTRATION.**



M-807 7-28-05-2

GENERAL SAFETY PRECAUTIONS

WARNING!



DO NOT MODIFY MACHINE OR ATTACHMENTS

Modifications may weaken the integrity of the attachment and may impair the function, safety, life, and performance of the attachment. When making repairs, use only the manufacturer's genuine parts, following authorized instructions. Other parts may be substandard in fit and quality. Never modify any ROPS (Roll Over Protection Structure) or FOPS (Falling Object Protective Structure) equipment or device. Any modifications must be authorized in writing by the manufacturer.

WARNING!



SAFELY MAINTAIN AND REPAIR EQUIPMENT

- Do not wear loose clothing or any accessories that can catch in moving parts. If you have long hair, cover or secure it so that it does not become entangled in the equipment.
- Work on a level surface in a well-lit area.
- Use properly grounded electrical outlets and tools.
- Use the correct tools for the job at hand. Make sure they are in good condition for the task required.
- Wear the protective equipment specified by the tool manufacturer.



SAFELY OPERATE EQUIPMENT

Do not operate equipment until you are completely trained by a qualified operator in how to use the controls, know its capabilities, dimensions, and all safety requirements. See your machine's manual for these instructions.

- Keep all step plates, grab bars, pedals, and controls free of dirt, grease, debris, and oil.
- Never allow anyone to be around the equipment when it is operating.
- Do not allow riders on the attachment or the prime mover.
- Do not operate the equipment from anywhere other than the correct operator's position.
- Never leave equipment unattended with the engine running, or with this attachment in a raised position.
- Do not alter or remove any safety feature from the prime mover or this attachment.
- Know your work site safety rules as well as traffic rules and flow. When in doubt on any safety issue, contact your supervisor or safety coordinator for an explanation.

EQUIPMENT SAFETY PRECAUTIONS

ADAPTERS

Check for adapter fit-up compatibility before installation. Have all welding done by an experienced welder, or at a reputable custom fabrication and welding shop. Your judgment in locating, reinforcing, and welding will be necessary to get a secure and safe mounting for your specific attachment.

WARNING!



REMOVE PAINT BEFORE WELDING OR HEATING

Hazardous fumes/dust can be generated when paint is heated by welding, soldering or using a torch. Do all work outside or in a well ventilated area and dispose of paint and solvent properly. Remove paint before welding or heating.

When sanding or grinding paint, avoid breathing the dust. Wear an approved respirator. If you use solvent or paint stripper, remove stripper with soap and water before welding. Remove solvent or paint stripper containers and other flammable material from area. Allow fumes to disperse at least 15 minutes before welding or heating.

WARNING!



CHECK ALL LOCKING PINS

To avoid Serious Personal Injury, make sure all locking pins are completely engaged, and that the attachment is securely latched. Failure to do so could result in separation of the attachment from the telehandler.

WARNING!



EXPOSURE TO RESPIRABLE CRYSTALLINE SILICA DUST ALONG WITH OTHER HAZARDOUS DUSTS MAY CAUSE SERIOUS OR FATAL RESPIRATORY DISEASE.

It is recommended to use dust suppression, dust collection, and if necessary, personal protective equipment during the operation of any attachment that may cause high levels of dust.

INSTALLATION AND OPERATION

ADAPTER COMPATIBILITY

All adapters at the back of this manual list the prime mover they were originally designed for. Your local dealer will help determine hitch compatibility on all other applications.

BLANK (WELD-ON) ADAPTERS

Blank adapters are designed for specific applications, and are to be welded on to your attachment to adapt it to your prime mover.

NOTICE: Compatibility between the attachment and the prime mover (lift capacity) must be determined before installing the adapter on to your attachment.

Prime mover lift capacity also needs to be taken into consideration when welding the adapter on to your attachment. The Major does not assume liability for the welding or compatibility between prime mover and the attachment.

INSTALLING WELD-ON ADAPTERS

It is recommended to check for adapter fit-up before installation, and to have all welding done by an experienced welder or at a reputable custom fabrication and welding shop. Your judgment in locating, reinforcing, and welding will be necessary to get a secure mounting for your specific attachment.

ATTACHING AND DETACHING WELD-ON ADAPTERS

Follow all standard safety practices and the instructions in your prime mover operator's manual.

BOLT-ON UNIVERSAL ADAPTERS

Bolt-on universal adapters are designed to bolt on, and remain on your universal hitch attachments, adapting them to your prime mover.

WARNING! Never exceed the rated capacity of the attachment.



INSTALLING BOLT-ON ADAPTERS

Position the hitch on to your universal attachment, and bolt the bottom plate through the existing holes and into the adapter, to secure it in place. Torque to the recommended specification.

ATTACHING AND DETACHING BOLT-ON ADAPTERS

Follow all standard safety practices and the instructions in your prime mover operator's manual.

UNIVERSAL ADAPTERS

Universal adapters are designed for converting the hitch on your prime mover to a quick attach universal hitch, for connecting to universal hitch attachments.

WARNING! Never exceed the rated capacity of the attachment.



ATTACHING AND DETACHING UNIVERSAL ADAPTERS

Follow all standard safety practices and the instructions in your prime mover's operator's manual.




BOLT TORQUE

BOLT TORQUE SPECIFICATIONS

GENERAL TORQUE SPECIFICATION TABLE

Use the following torques when special torques are not given. These values apply to fasteners as received from suppliers, dry, or when lubricated with normal engine oil. They do not apply if special graphited or moly disulphide greases or other extreme pressure lubricants are used. This applies to both UNF and UNC threads. Remember to always use grade five or better when replacing bolts.

IMPORTANT: On all PLATED GRADE 8 bolts, reduce torque 15% from listed bolt torque specification.

SAE Grade No.		2				5				8*			
Bolt head identification marks as per grade. NOTE: Manufacturing Marks Will Vary													
		TORQUE		TORQUE		TORQUE		TORQUE		TORQUE		TORQUE	
Bolt Size		Pounds Feet		Newton-Meters		Pounds Feet		Newton-Meters		Pounds Feet		Newton-Meters	
Inches	Millimeters	Min.	Max.	Min.	Max.	Min.	Max.	Min.	Max.	Min.	Max.	Min.	Max.
1/4	6.35	5	6	7	8	9	11	12	15	12	15	16	20
5/16	7.94	10	12	14	16	17	20.5	23	28	24	29	33	39
3/8	9.53	20	23	27	31	35	42	48	57	45	54	61	73
7/16	11.11	30	35	41	47	54	64	73	87	70	84	95	114
1/2	12.70	45	52	61	70	80	96	109	130	110	132	149	179
9/16	14.29	65	75	88	102	110	132	149	179	160	192	217	260
5/8	15.88	95	105	129	142	150	180	203	244	220	264	298	358
3/4	19.05	150	185	203	251	270	324	366	439	380	456	515	618
7/8	22.23	160	200	217	271	400	480	542	651	600	720	814	976
1	25.40	250	300	339	406	580	696	787	944	900	1080	1220	1464
1-1/8	25.58	-	-	-	-	800	880	1085	1193	1280	1440	1736	1953
1-1/4	31.75	-	-	-	-	1120	1240	1519	1681	1820	2000	2468	2712
1-3/8	34.93	-	-	-	-	1460	1680	1980	2278	2380	2720	3227	3688
1-1/2	38.10	-	-	-	-	1940	2200	2631	2983	3160	3560	4285	4827

* Thick Nuts must be used with Grade 8 bolts

METRIC BOLT TORQUE SPECIFICATIONS

Size of Screw	Grade No.	Coarse Thread			Fine Thread		
		Pitch (mm)	Pounds Feet	Newton-Meters	Pitch (mm)	Pounds Feet	Newton-Meters
M6	5.6	1.0	3.6-5.8	4.9-7.9	-	-	-
	8.8		5.8-4	7.9-12.7		-	-
	10.9		7.2-10	9.8-13.6		-	-
M8	5.6	1.25	7.2-14	9.8-19	1.0	12-17	16.3-23
	8.8		17-22	23-29.8		19-27	25.7-36.6
	10.9		20-26	27.1-35.2		22-31	29.8-42
M10	5.6	1.5	20-25	27.1-33.9	1.25	20-29	27.1-39.3
	8.8		34-40	46.1-54.2		35-47	47.4-63.7
	10.9		38-46	51.5-62.3		40-52	54.2-70.5
M12	5.6	1.75	28-34	37.9-46.1	1.25	31-41	42-55.6
	8.8		51-59	69.1-79.9		56-68	75.9-92.1
	10.9		57-66	77.2-89.4		62-75	84-101.6
M14	5.6	2.0	49-56	66.4-75.9	1.5	52-64	70.5-86.7
	8.8		81-93	109.8-126		90-106	122-143.6
	10.9		96-109	130.1-147.7		107-124	145-168
M16	5.6	2.0	67-77	90.8-104.3	1.5	69-83	93.5-112.5
	8.8		116-130	157.2-176.2		120-138	162.6-187
	10.9		129-145	174.8-196.5		140-158	189.7-214.1
M18	5.6	2.0	88-100	119.2-136	1.5	100-117	136-158.5
	8.8		150-168	203.3-227.6		177-199	239.8-269.6
	10.9		175-194	237.1-262.9		202-231	273.7-313
M20	5.6	2.5	108-130	146.3-176.2	1.5	132-150	178.9-203.3
	8.8		186-205	252-277.8		206-242	279.1-327.9
	10.9		213-249	288.6-337.4		246-289	333.3-391.6

10360 6-8-95-2

STORAGE

GENERAL INFORMATION

The following storage procedure will help you to keep your attachment in top condition. It will also help you get off to a good start the next time your equipment is needed. We therefore strongly recommend that you take the extra time to follow these procedures whenever your attachment will not be used for an extended period of time.

PREPARATION FOR STORAGE

1. Clean the attachment thoroughly, removing all mud, dirt, and grease.
2. Inspect for visible signs of wear, breakage, or damage. Order any parts required, and make the necessary repairs, to avoid delays when starting next season.
3. Tighten all loose nuts and capscrews.
4. Touch up all unpainted and exposed areas with paint, to prevent rust.
5. Replace decals, if damaged or in unreadable condition.
6. Store the attachment in a dry and protected place, with a cover, if possible. Leaving the attachment outside will materially shorten its life.

REMOVING FROM STORAGE

1. Remove all protective coverings.

LIMITED WARRANTY

All new Major products are warranted to be free from defects in materials or workmanship which may cause failure under normal usage and service, when used for the purpose intended.

In the event of failure within twelve (12) months from initial retail sale, lease or rental date (excluding cable, ground engaging parts such as sprockets, digging chain, bearings, teeth, tamping and demolition heads, blade cutting edges, pilot bits, auger teeth, auger heads & broom bristles), if after examination, The Major determines failure was due to defective material and/or workmanship, parts will be repaired or replaced. The Major may request defective part or parts be returned prepaid to them for inspection at their place of business at Delhi, Iowa, or to a location specified by The Major.

Any claims under this warranty must be made within fifteen (15) days after the Buyer learns of the facts upon which such claim is based. All claims not made in writing and received by The Major within the time period specified above shall be deemed waived.

THIS WARRANTY IS IN LIEU OF ALL OTHER WARRANTIES EXPRESSED OR IMPLIED, AND THERE ARE NO WARRANTIES OF MERCHANTABILITY OR OF FITNESS FOR A PARTICULAR PURPOSE. IN NO EVENT SHALL THE MAJOR BE LIABLE FOR CONSEQUENTIAL OR SPECIAL DAMAGE.

THE MAJOR'S LIABILITY FOR ANY AND ALL LOSSES AND DAMAGES TO BUYER, RESULTING FROM ANY CAUSE WHATSOEVER, INCLUDING THE MAJOR'S NEGLIGENCE, IRRESPECTIVE OF WHETHER SUCH DEFECTS ARE DISCOVERABLE OR LATENT, SHALL IN NO EVENT EXCEED THE PURCHASE PRICE OF THE PARTICULAR PRODUCTS WITH RESPECT TO WHICH LOSSES OR DAMAGES ARE CLAIMED, OR, AT THE ELECTION OF THE MAJOR, THE REPAIR OR REPLACEMENT OF DEFECTIVE OR DAMAGED PRODUCTS.

PARTS

The following section contains detailed diagrams and parts lists which include your attachment. Please use these diagrams and parts lists to locate replacement parts, prior to contacting the parts department.

When servicing your attachment, remember to use only original manufacturer replacement parts. Substitute parts may not meet the standards required for safe, dependable operation.

To facilitate parts ordering, have the model and serial number of your product ready, to ensure that you receive the correct parts for your specific attachment.

The model and serial number for your attachment should be recorded in the space provided on the cover of this manual. This information may be obtained from the serial number identification plate located on your attachment. **See the parts diagram for your attachment for the location.**

NOTE: Most daily and emergency orders received by 2:00 P.M. will be shipped the same day received, with “Emergency-Machine-Down” orders receiving first priority.



PARTS DEPARTMENT

(563) 922-2981

(800) 922-2981

We Encourage Fax Orders

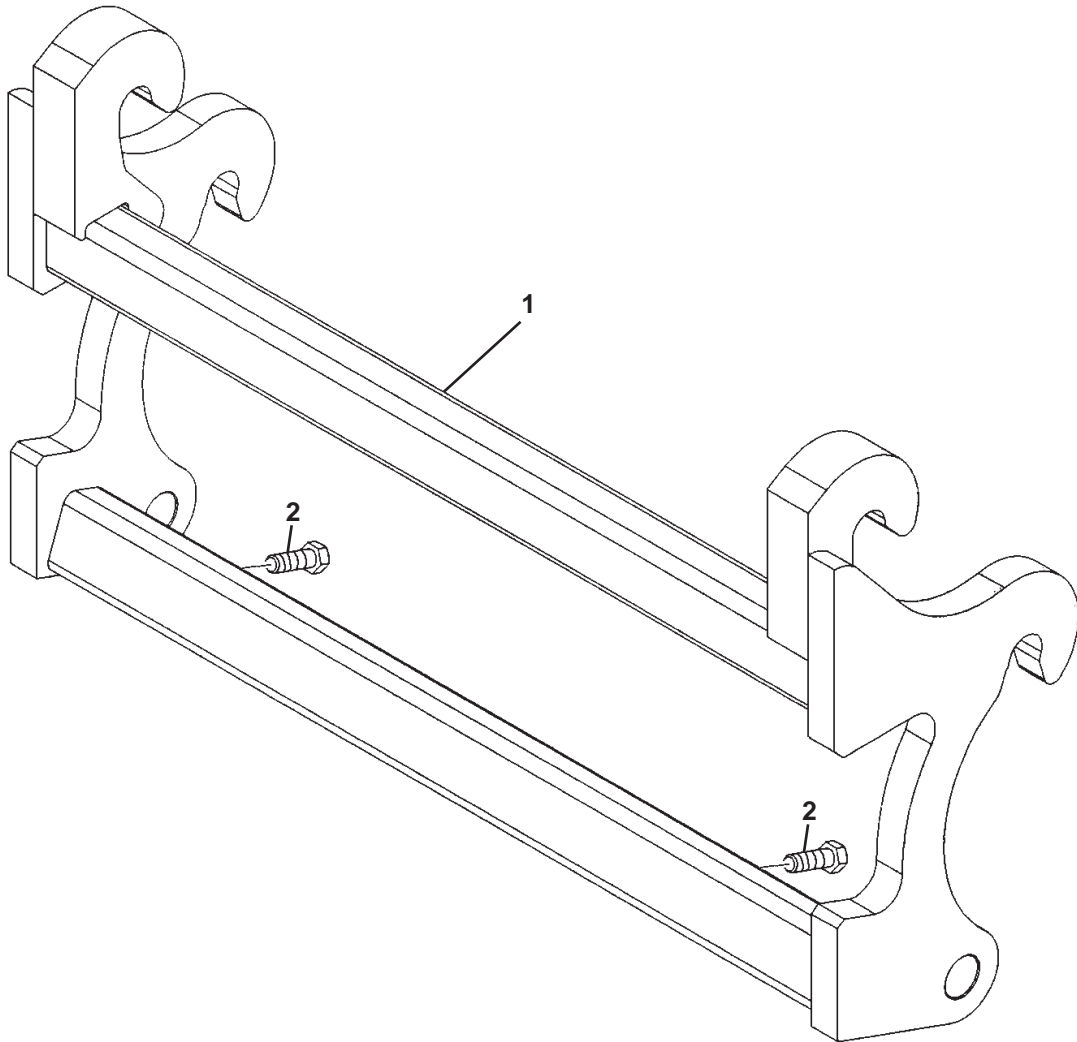
(563) 922-2593

M-1127 10-4-06-2

WELD-ON ADAPTER

ASSEMBLY #11599

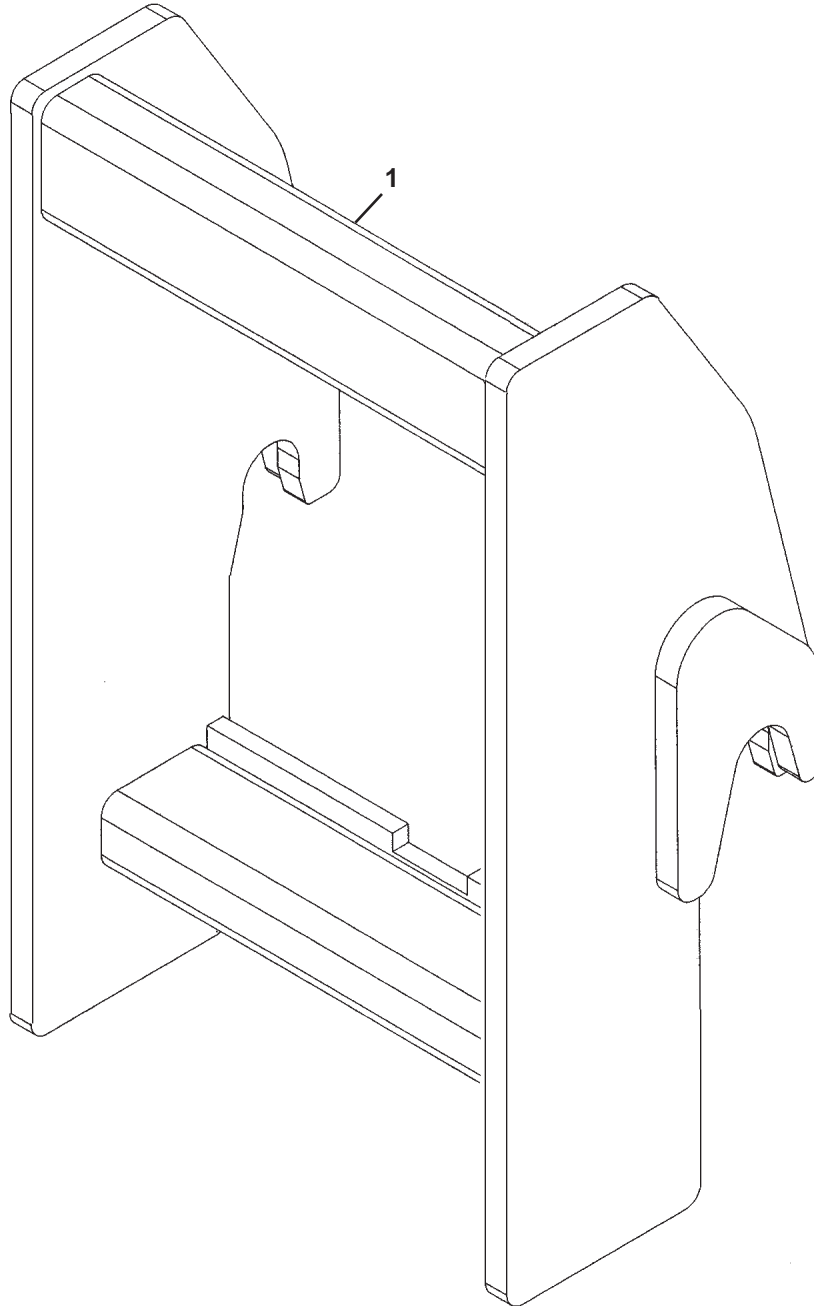
(Atlas)



<u>ITEM</u>	<u>QTY.</u>	<u>PART NO.</u>	<u>DESCRIPTION</u>
1	1	31200	Q-Fit Adapter
2	2	1116	.62" UNC x 2.00" Hex Capscrew

M-1774 2-20-08

WELD-ON ADAPTER
ASSEMBLY #11601
(Lull 644B/644D/844C/1044C)



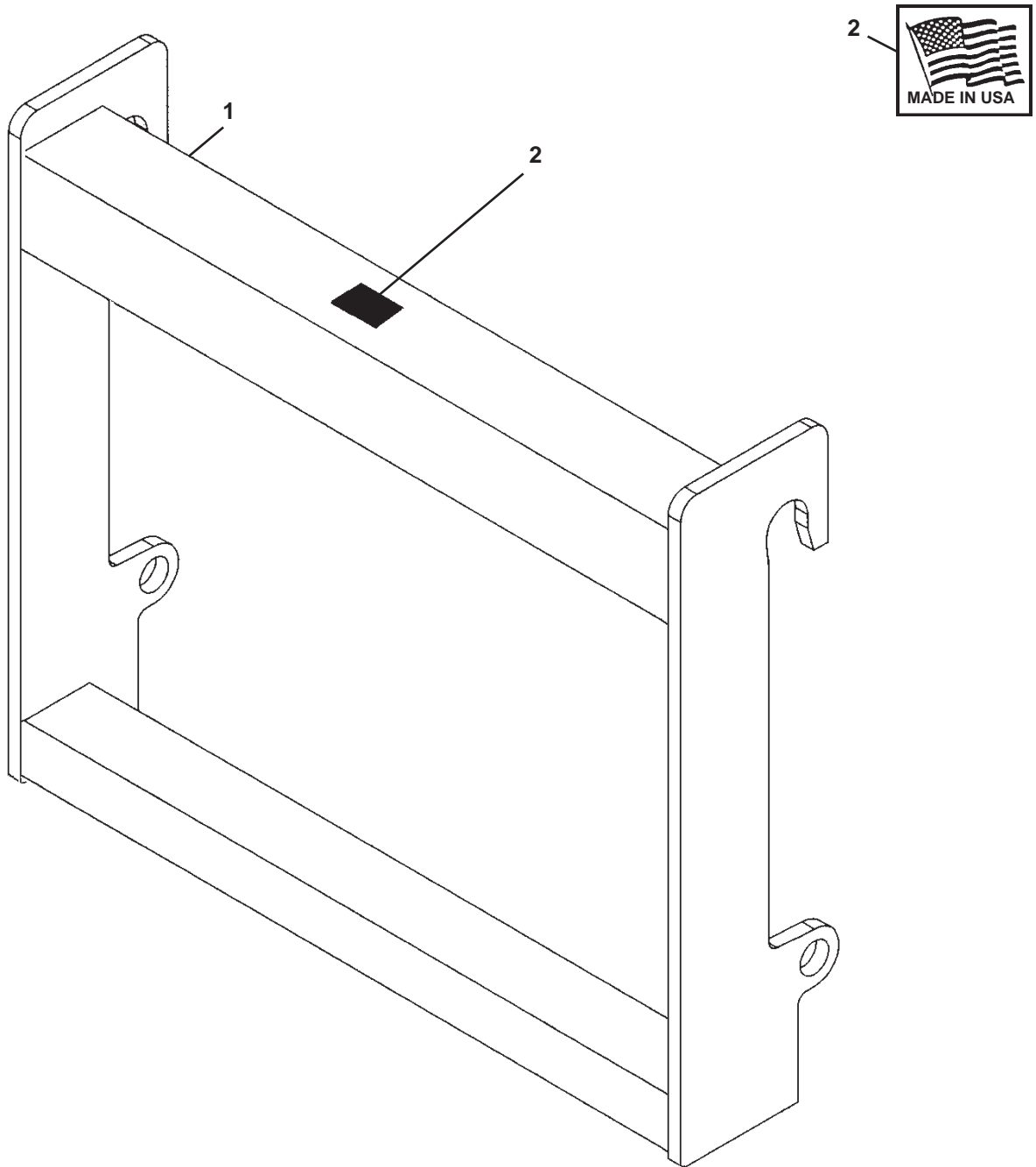
<u>ITEM</u>	<u>QTY.</u>	<u>PART NO.</u>	<u>DESCRIPTION</u>
1	1	11601	Adapter

M-1776 2-20-08

WELD-ON ADAPTER

ASSEMBLY #12066

(JCB Q-Fit)



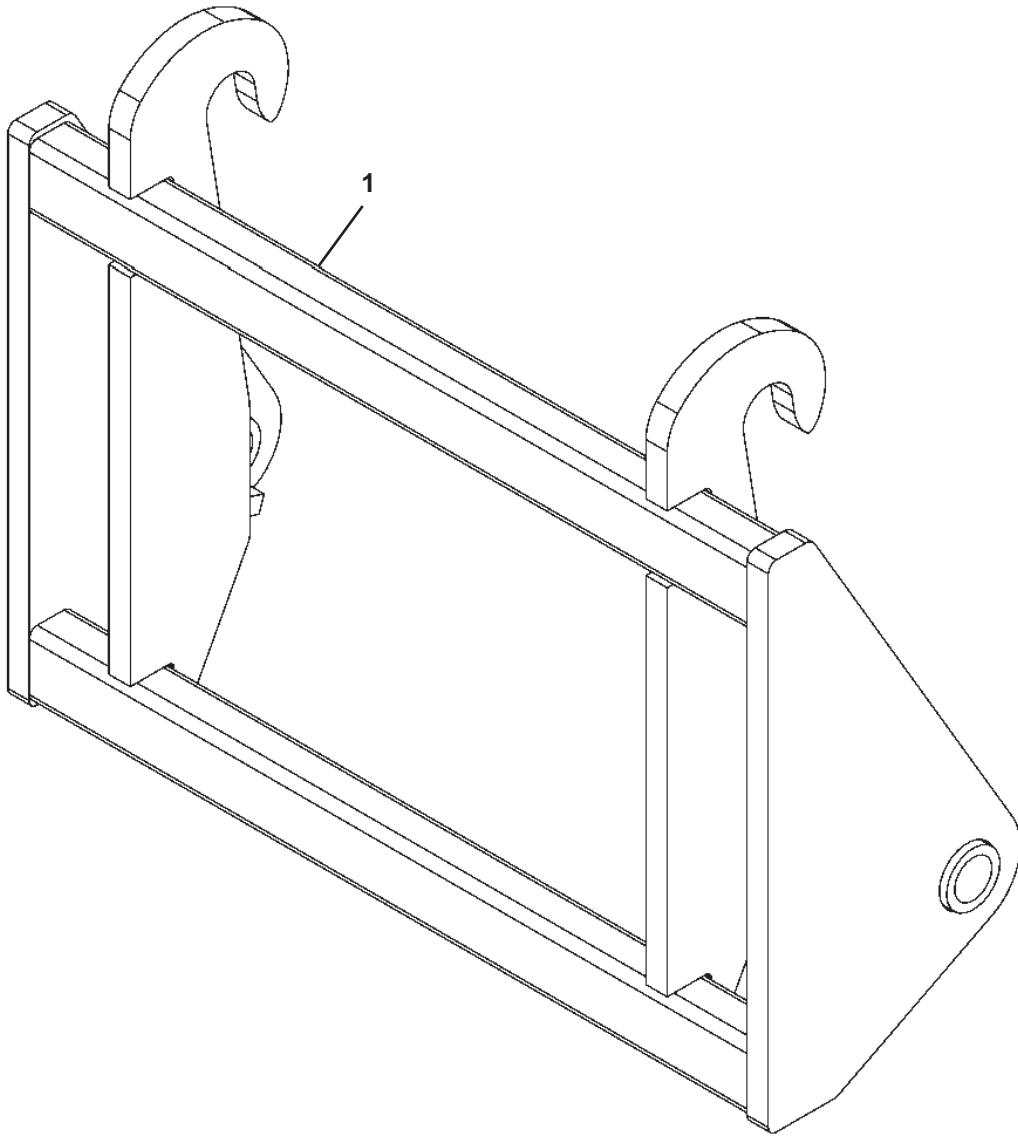
<u>ITEM</u>	<u>QTY.</u>	<u>PART NO.</u>	<u>DESCRIPTION</u>
1	1	32962	Adapter
2	2	4338	Made in USA Decal

M-1777 2-20-08

WELD-ON ADAPTER

ASSEMBLY #12067

(JCB 210S/212S)

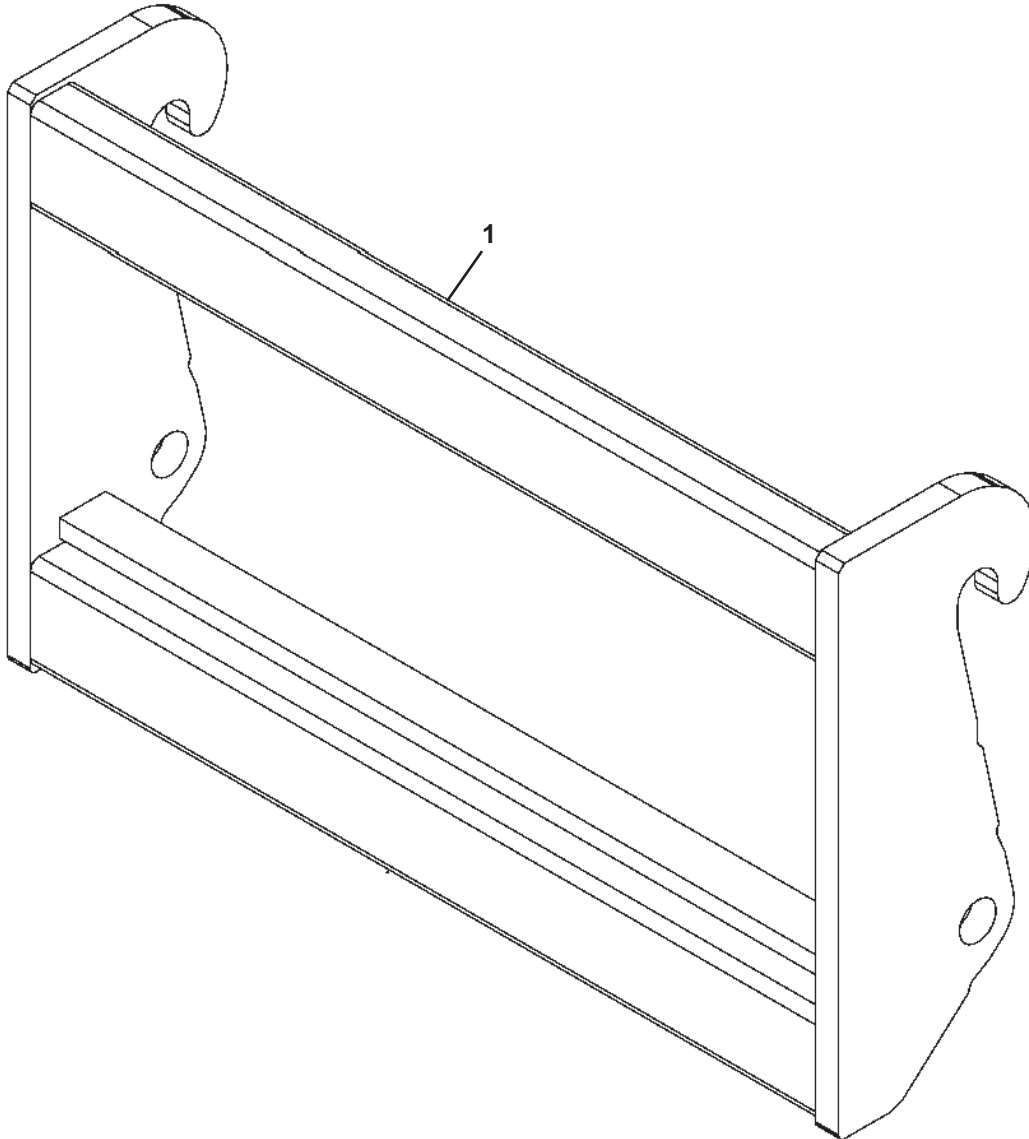


<u>ITEM</u>	<u>QTY.</u>	<u>PART NO.</u>	<u>DESCRIPTION</u>
1	1	33231	Adapter

WELD-ON ADAPTER

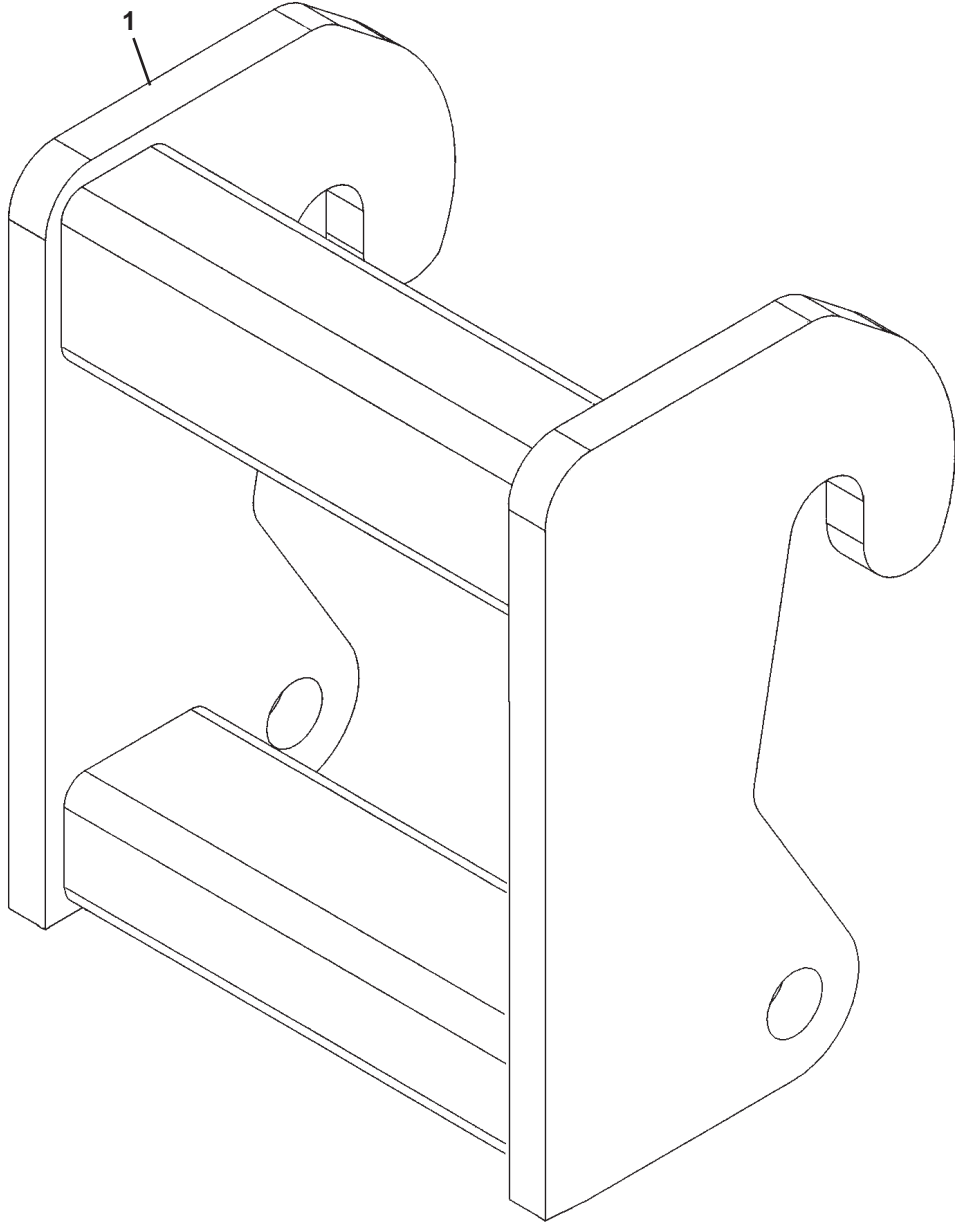
ASSEMBLY #12068

(JCB 407/409 BZ With Zettlemeyer & Komatsu WA75/85/95)



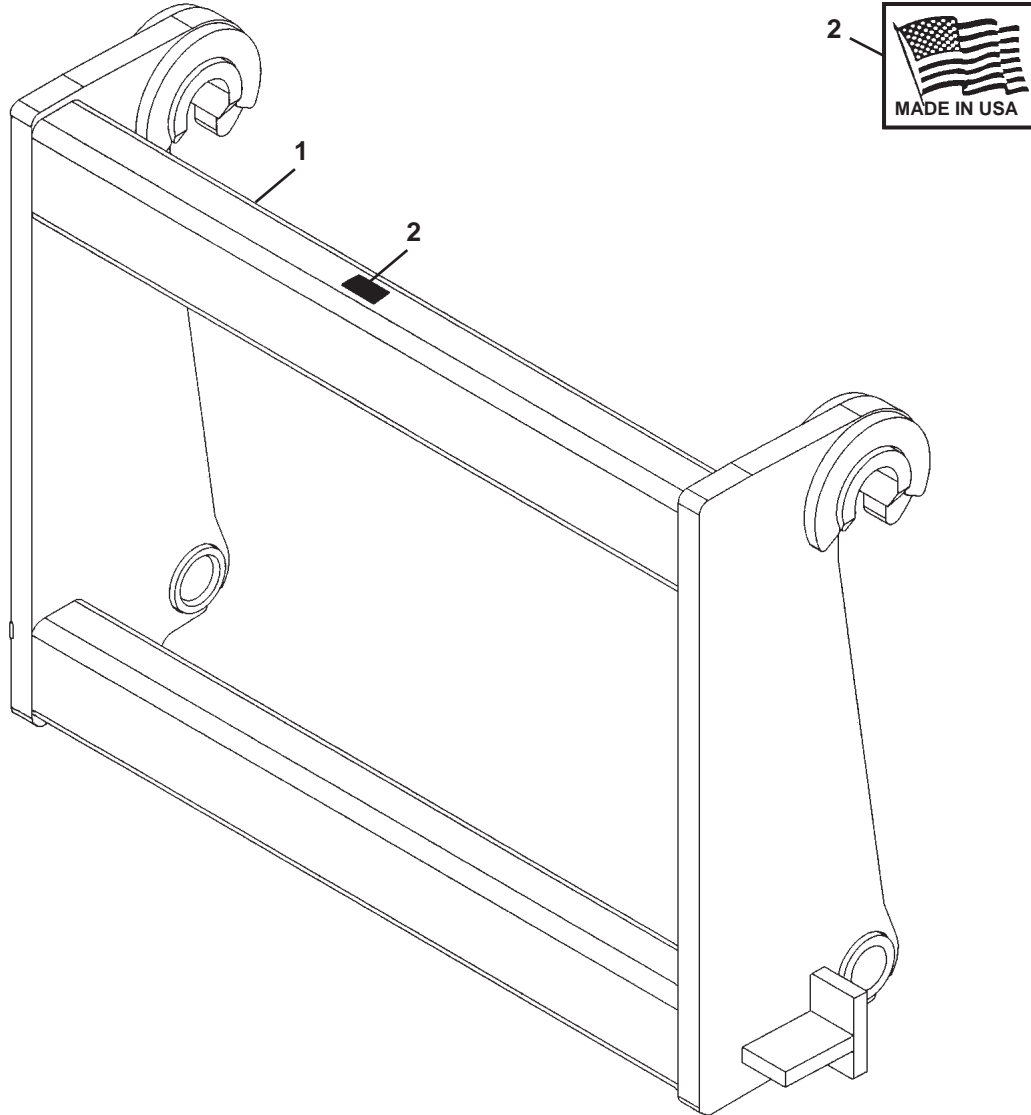
<u>ITEM</u>	<u>QTY.</u>	<u>PART NO.</u>	<u>DESCRIPTION</u>
1	1	12068	Adapter

WELD-ON ADAPTER
ASSEMBLY #12069
(JCB 506/508 & Lull 644/944E & Trak & Terex)



<u>ITEM</u>	<u>QTY.</u>	<u>PART NO.</u>	<u>DESCRIPTION</u>
1	1	12069	Adapter

WELD-ON ADAPTER
 ASSEMBLY #12072
 (JCB 411/416/426/436 With HT Coupler)

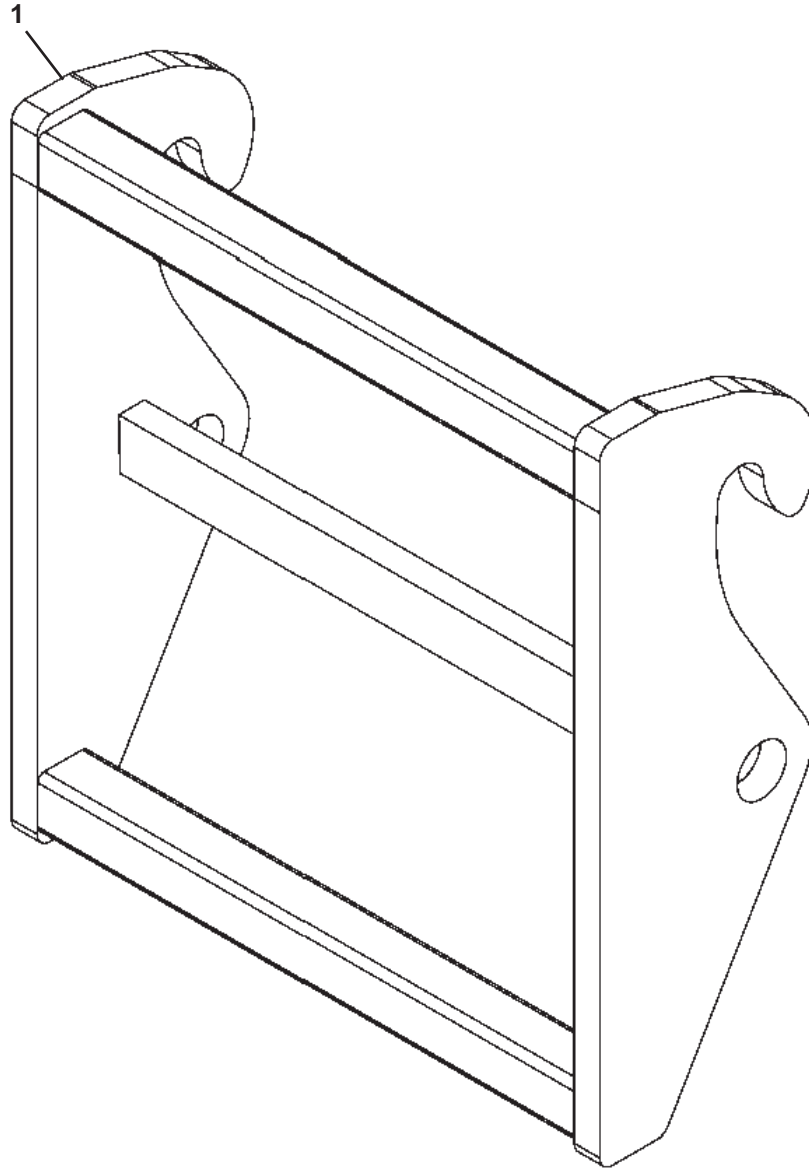


<u>ITEM</u>	<u>QTY.</u>	<u>PART NO.</u>	<u>DESCRIPTION</u>
1	1	33521	Adapter
2	2	4338	Made in USA Decal

WELD-ON ADAPTER

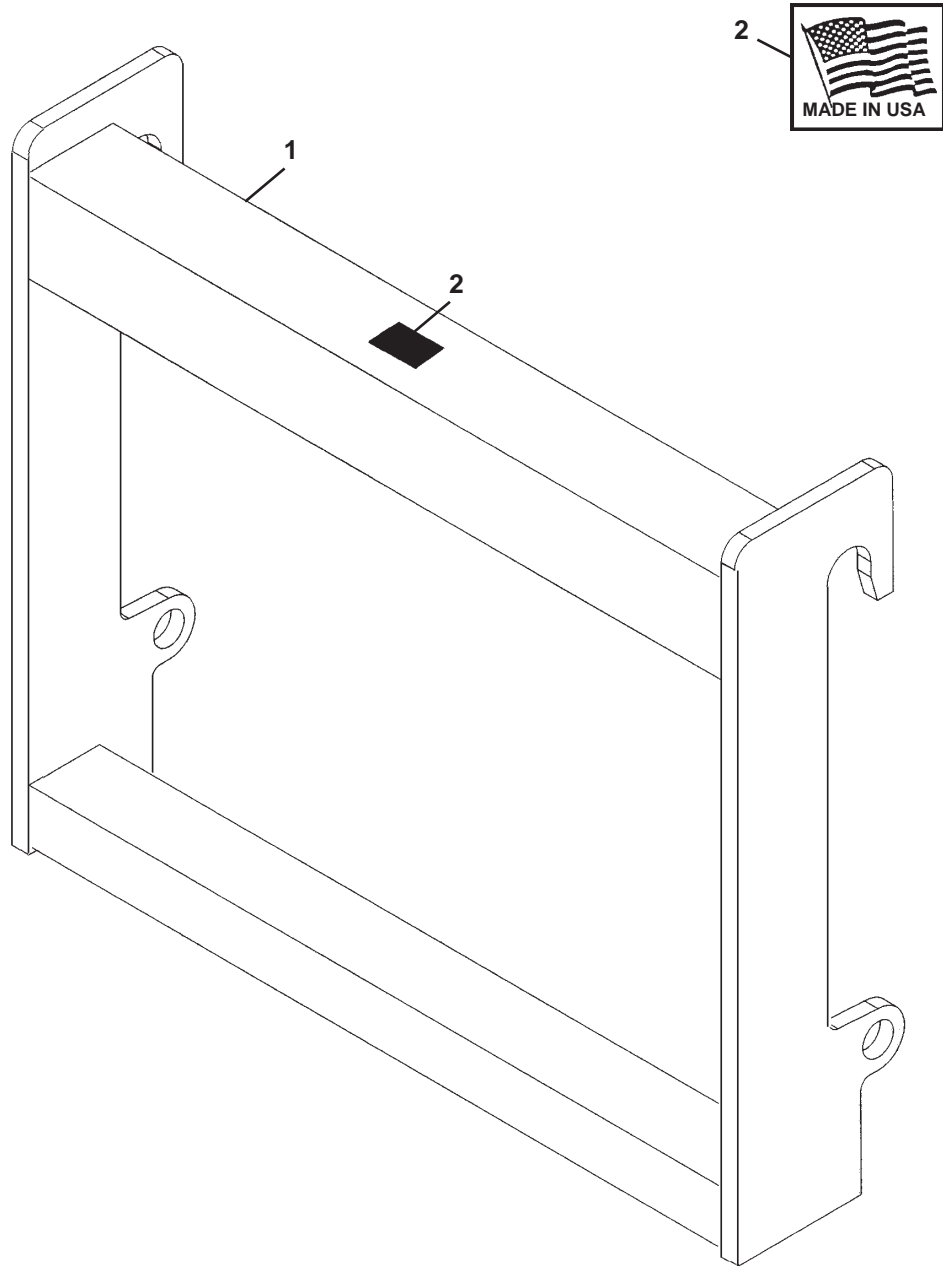
ASSEMBLY #12074

(JCB 520/407A)



<u>ITEM</u>	<u>QTY.</u>	<u>PART NO.</u>	<u>DESCRIPTION</u>
1	1	12074	Adapter

WELD-ON ADAPTER
ASSEMBLY #12076
(New Holland Versattach & JCB Q-Fit)



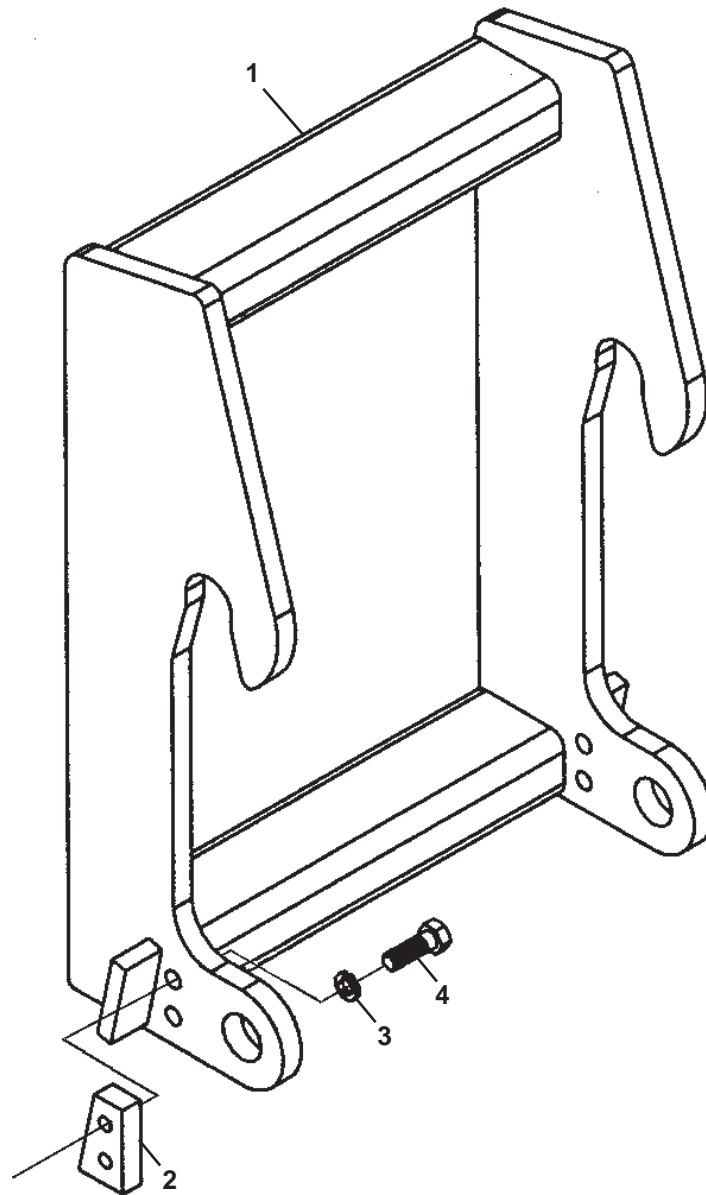
<u>ITEM</u>	<u>QTY.</u>	<u>PART NO.</u>	<u>DESCRIPTION</u>
1	1	32962	Adapter
2	1	4338	Made in USA Decal

M-1822 2-20-08

WELD-ON ADAPTER

ASSEMBLY #12246

(CAT IT/TH)

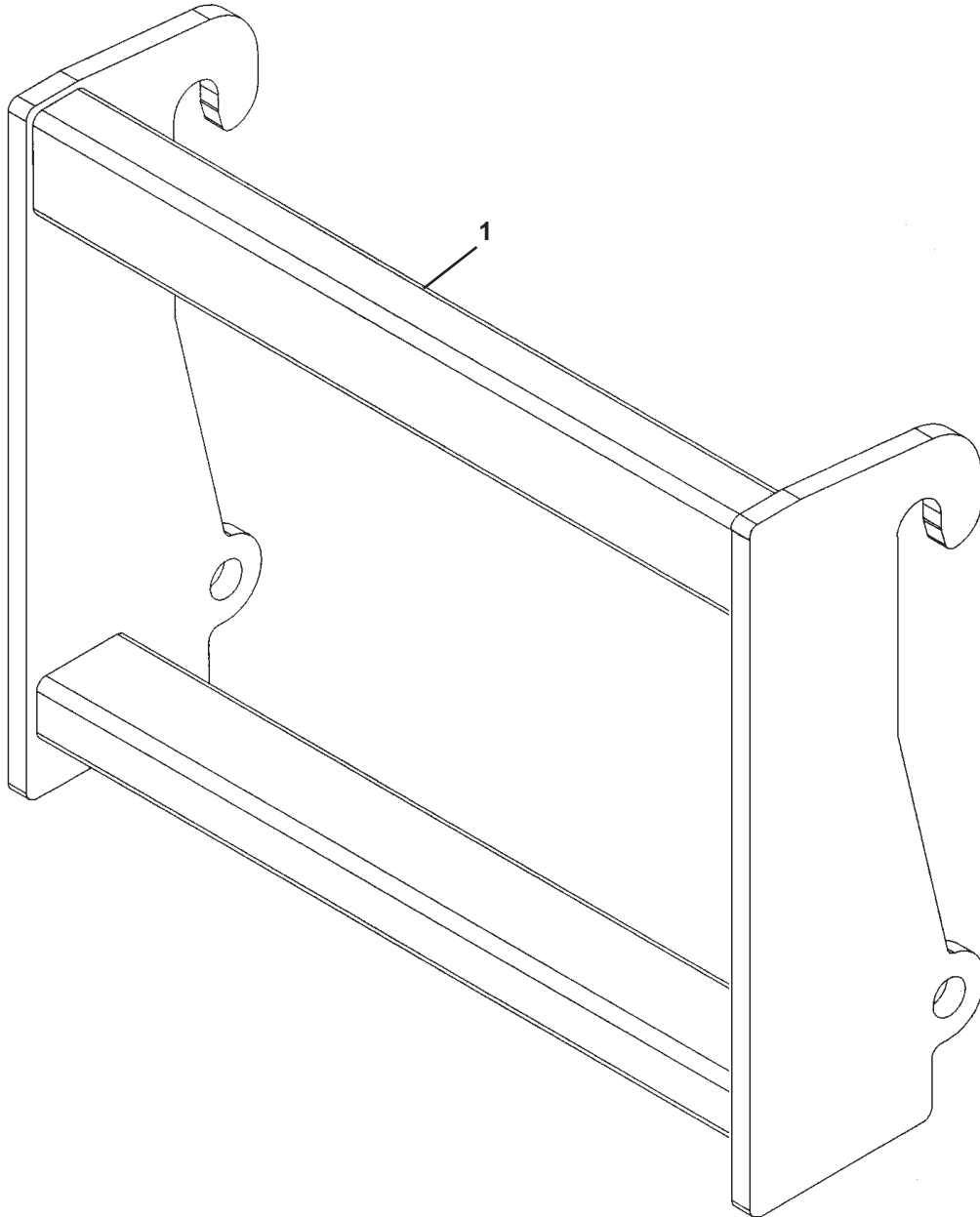


<u>ITEM</u>	<u>QTY.</u>	<u>PART NO.</u>	<u>DESCRIPTION</u>
1	1	14608	Blank Adapter
2	2	14228	Stop Block
3	4	1507	.75" Lock Washer
4	4	10012	.75" UNC x 2.25" Hex Capscrew, Grade 8

WELD-ON ADAPTER

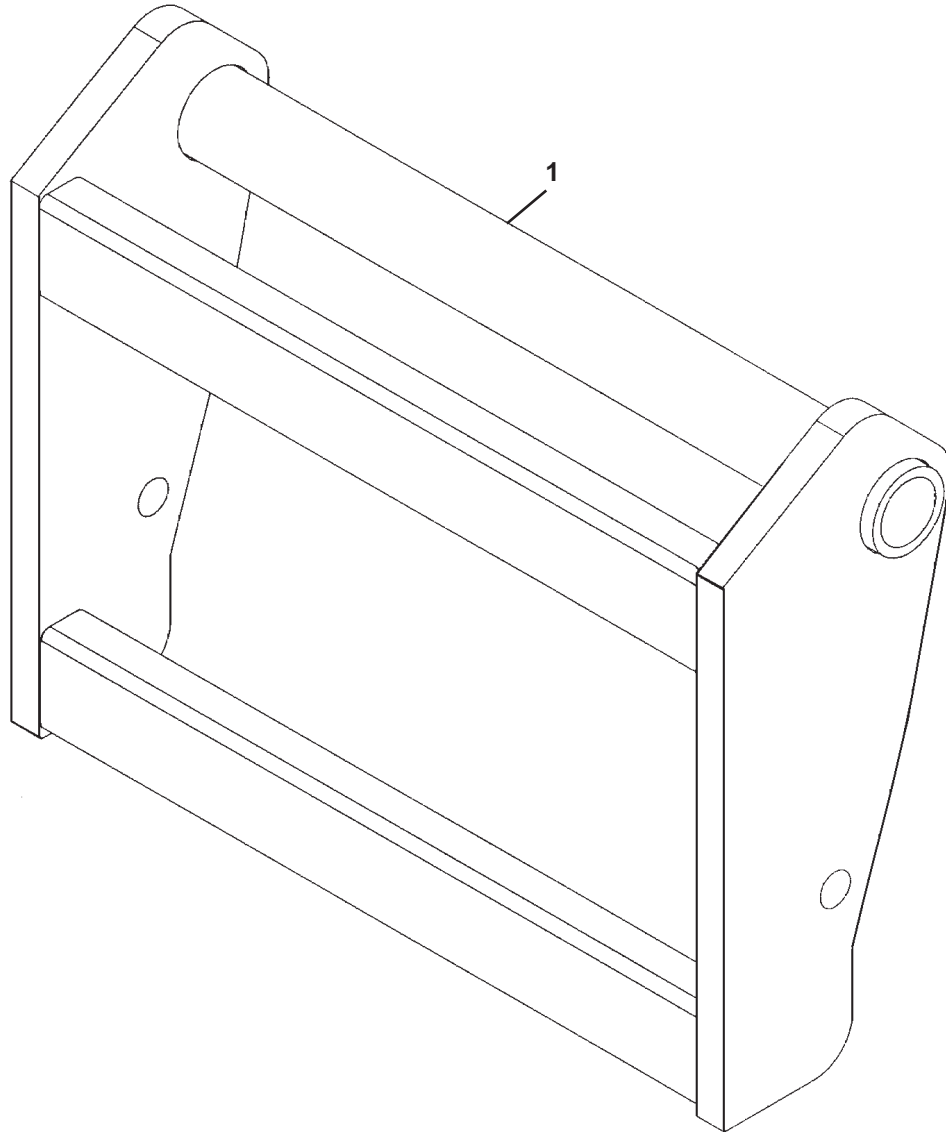
ASSEMBLY #12325

(JCB 214/215/217)



<u>ITEM</u>	<u>QTY.</u>	<u>PART NO.</u>	<u>DESCRIPTION</u>
1	1	12325	Adapter

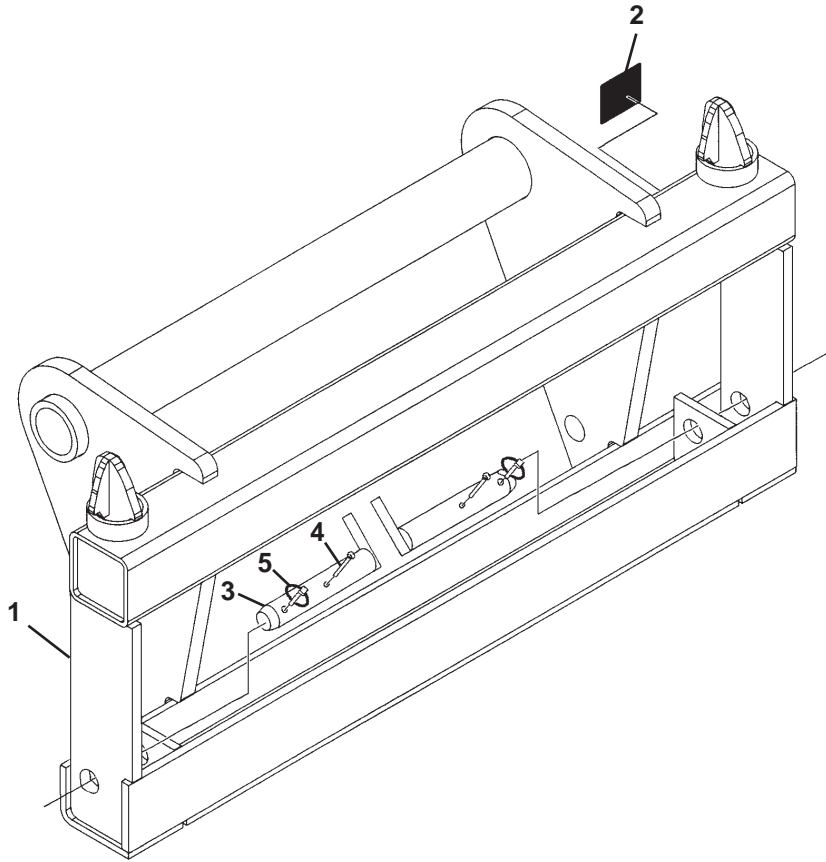
WELD-ON ADAPTER
ASSEMBLY #12608
(Manitou & New Holland LM435A-LM445A)



<u>ITEM</u>	<u>QTY.</u>	<u>PART NO.</u>	<u>DESCRIPTION</u>
1	1	12608	Adapter

M-1820 2-20-08

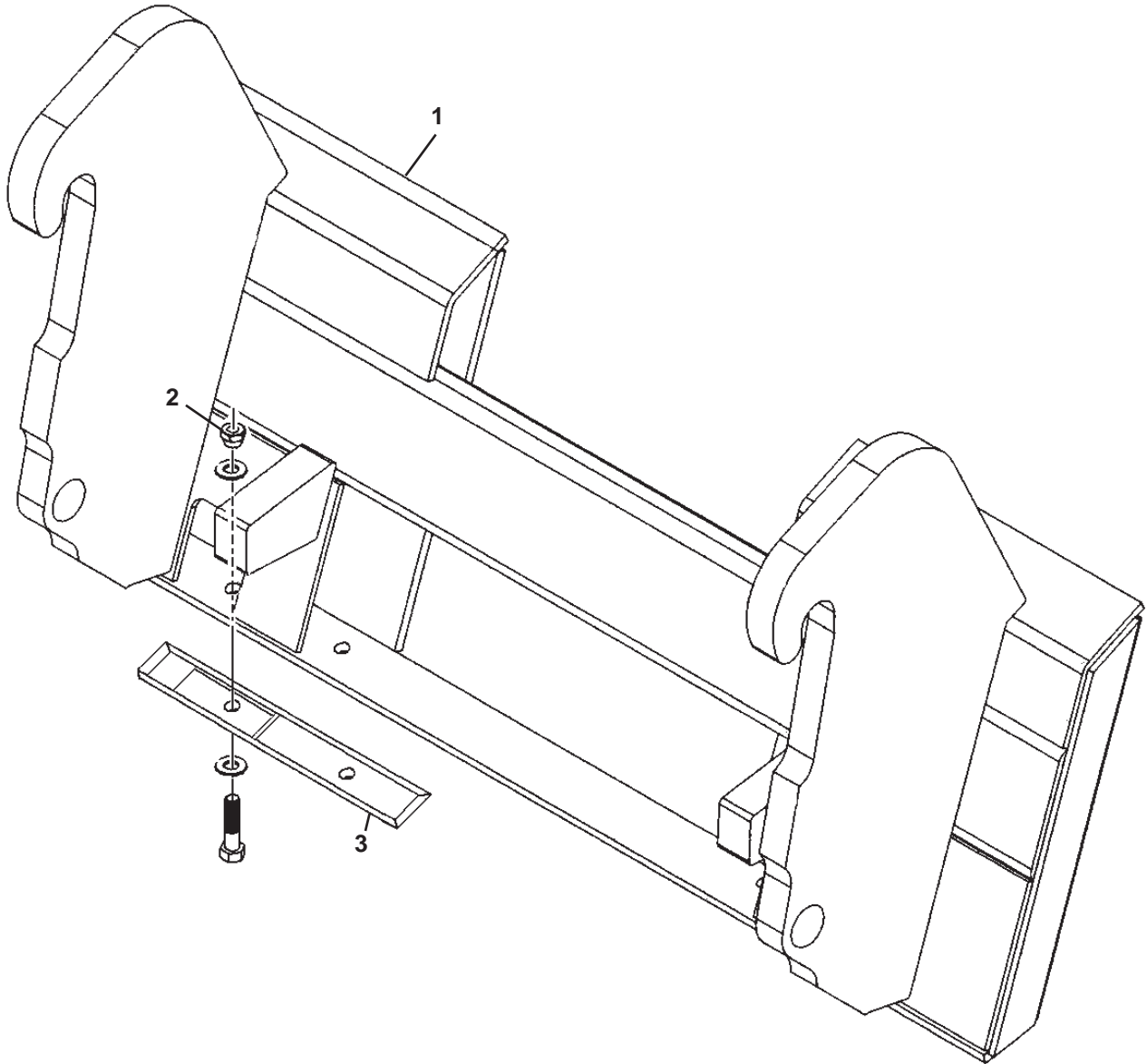
ADAPTER
ASSEMBLY #13051
(Manitou to John Deere)



<u>ITEM</u>	<u>QTY.</u>	<u>PART NO.</u>	<u>DESCRIPTION</u>
1	1	109529	Adapter
2	1	-----	Serial Number Identification Tag Location
3	2	109520	Pin
4	2	1793	Cotter Pin
5	2	6626	Click Pin

BOLT-ON UNIVERSAL ADAPTER

ASSEMBLY #12532
(Komatsu WA75/85/95)

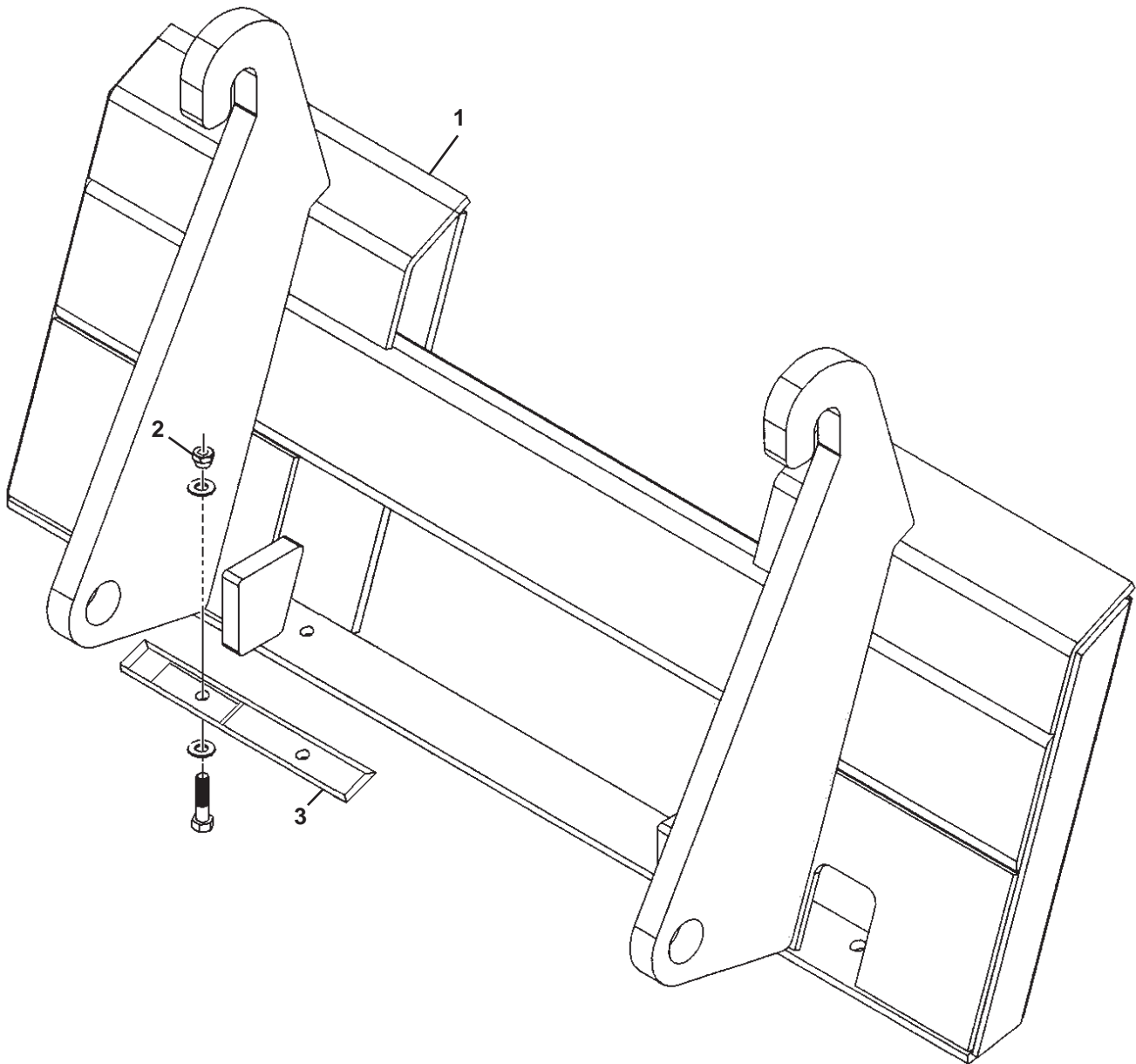


<u>ITEM</u>	<u>QTY.</u>	<u>PART NO.</u>	<u>DESCRIPTION</u>
1	1	18381	Adapter
2	4	1841	.50" UNC Deformed Lock Nut
	8	1516	.50" Flat Washer
	4	1092	.50" UNC x 2.00" Hex Capscrew
3	2	33675	Catch Lock

BOLT-ON UNIVERSAL ADAPTER

ASSEMBLY #33670

(Volvo ZL402)



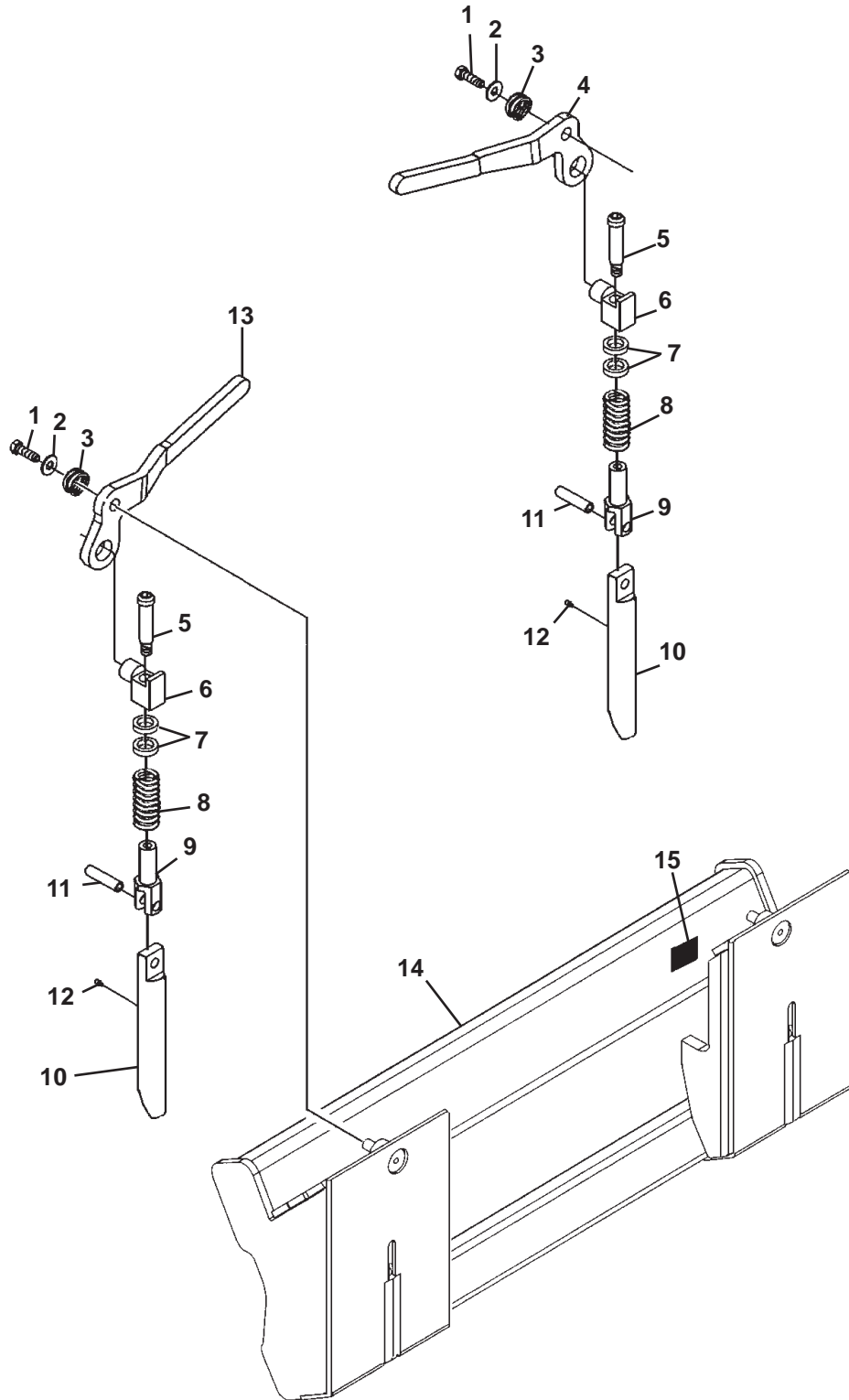
<u>ITEM</u>	<u>QTY.</u>	<u>PART NO.</u>	<u>DESCRIPTION</u>
1	1	33671	Adapter
2	4	1841	.50" UNC Deformed Lock Nut
	8	1516	.50" Flat Washer
	4	1092	.50" UNC x 2.00" Hex Capscrew
3	2	33675	Catch Lock

WELD-ON UNIVERSAL ADAPTER

ASSEMBLY #12626
(Weld On To Your Hitch)



15



WELD-ON UNIVERSAL ADAPTER

ASSEMBLY #12626
(Weld On To Your Hitch)

<u>ITEM</u>	<u>QTY.</u>	<u>PART NO.</u>	<u>DESCRIPTION</u>
1	2	1044	.38" UNC x 1.25" Hex Capscrew
2	2	1514	.38" Flat Washer
3	2	87333	Lock Handle Spring
4	1	87331	Left Lock Handle
5	2	87335	Shoulder Bolt
6	2	87330	Bearing End Lock Pin
7	4	33056	Spacer
8	2	87334	Clevis Spring
9	2	87329	Clevis
10	2	87328	Lock Pin
11	2	87337	Roll Pin
12	2	6616	Grease Fitting
13	1	87342	Right Lock Handle
14	1	24489	Adapter Bracket
15	1	4338	Made In USA Decal

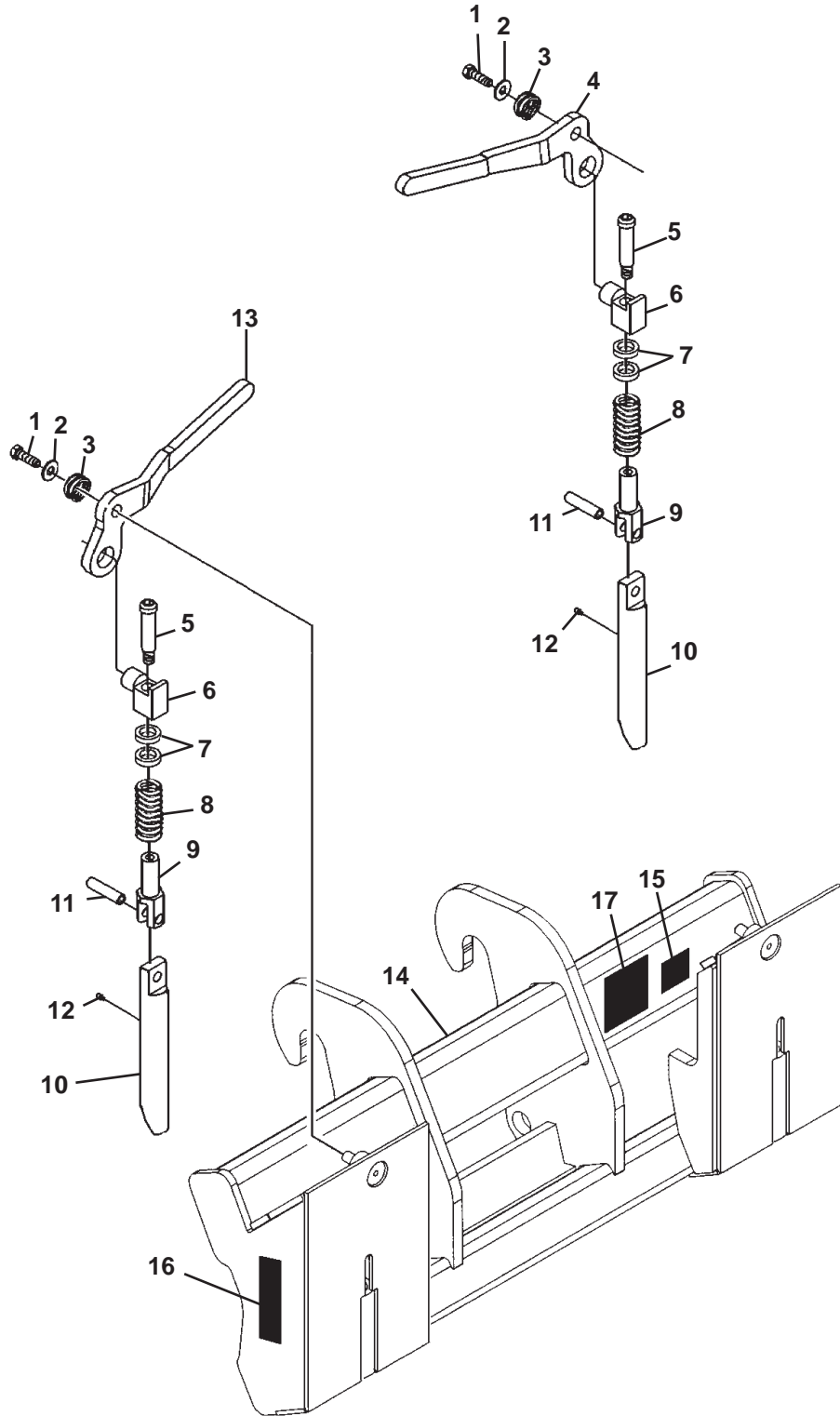
UNIVERSAL ADAPTER

ASSEMBLY #11634
(JCB 506/508, Terex, Upright, & Trak)



THE
**M
A
J
O
R**

16



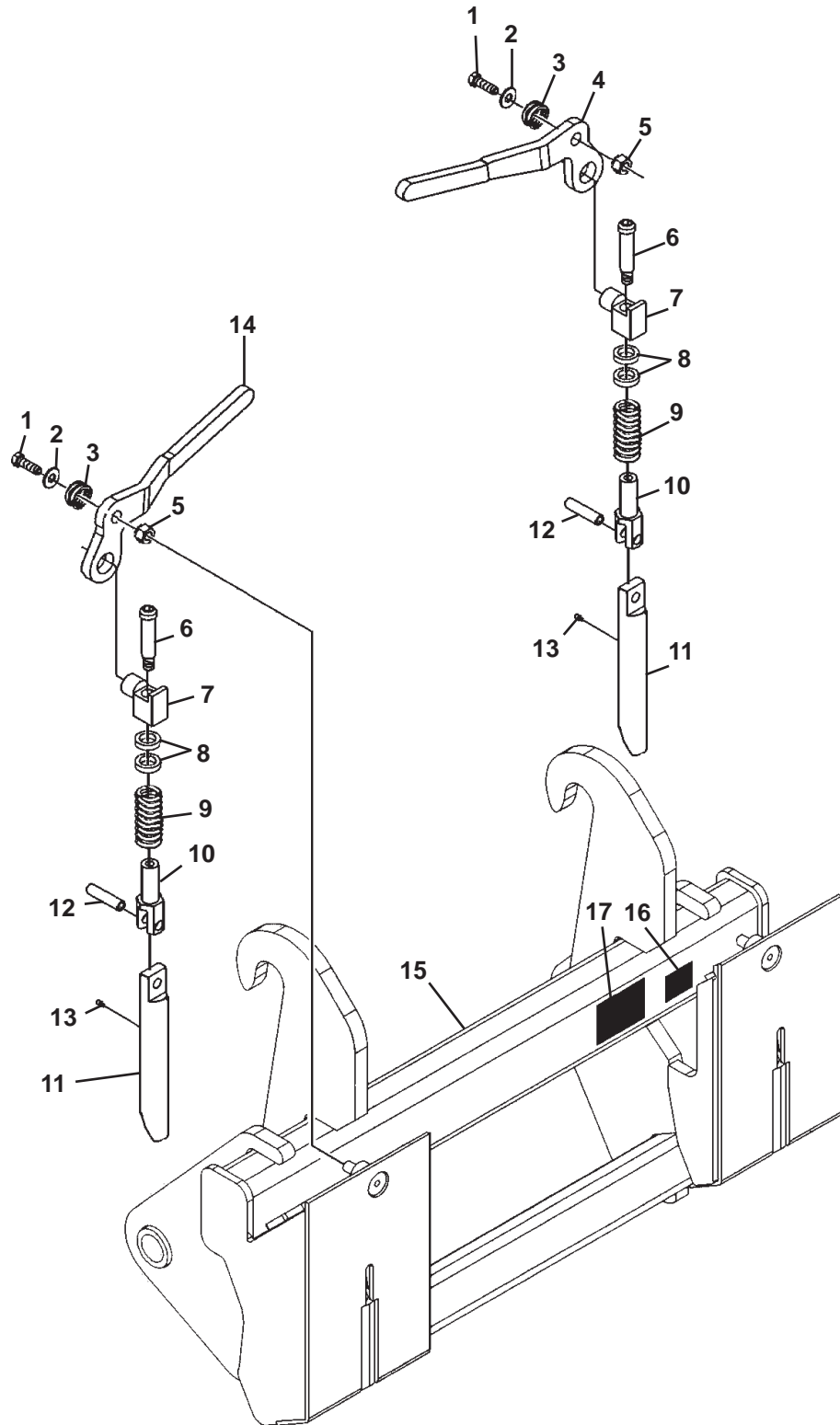
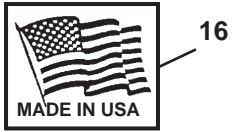
UNIVERSAL ADAPTER
 ASSEMBLY #11634
 (JCB 506/508, Terex, Upright, & Trak)

<u>ITEM</u>	<u>QTY.</u>	<u>PART NO.</u>	<u>DESCRIPTION</u>
1	2	1044	.38" UNC x 1.25" Hex Capscrew
2	2	1514	.38" Flat Washer
3	2	87333	Lock Handle Spring
4	1	87331	Left Lock Handle
5	2	87335	Shoulder Bolt
6	2	87330	Bearing End Lock Pin
7	4	33056	Spacer
8	2	87334	Clevis Spring
9	2	87329	Clevis
10	2	87328	Lock Pin
11	2	87337	Roll Pin
12	2	6616	Grease Fitting
13	1	87342	Right Lock Handle
14	1	16661	Adapter Bracket
15	1	4338	Made In USA Decal
16	1	40501	Major Logo, Vertical
17	1	-----	Serial Number Identification Tag Location

UNIVERSAL ADAPTER

ASSEMBLY #11684

(JCB 210S/212)



UNIVERSAL ADAPTER

ASSEMBLY #11684

(JCB 210S/212)

<u>ITEM</u>	<u>QTY.</u>	<u>PART NO.</u>	<u>DESCRIPTION</u>
1	2	1044	.38" UNC x 1.25" Hex Capscrew
2	2	1514	.38" Flat Washer
3	2	87333	Lock Handle Spring
4	1	87331	Left Lock Handle
5	2	1536	.38" UNC Nylock Nut
6	2	87335	Shoulder Bolt
7	2	87330	Bearing End Lock Pin
8	4	33056	Spacer
9	2	87334	Clevis Spring
10	2	87329	Clevis
11	2	87328	Lock Pin
12	2	87337	Roll Pin
13	2	6616	Grease Fitting
14	1	87342	Right Lock Handle
15	1	32779	Adapter Bracket
16	1	4338	Made In USA Decal
17	1	-----	Serial Number Identification Tag Location

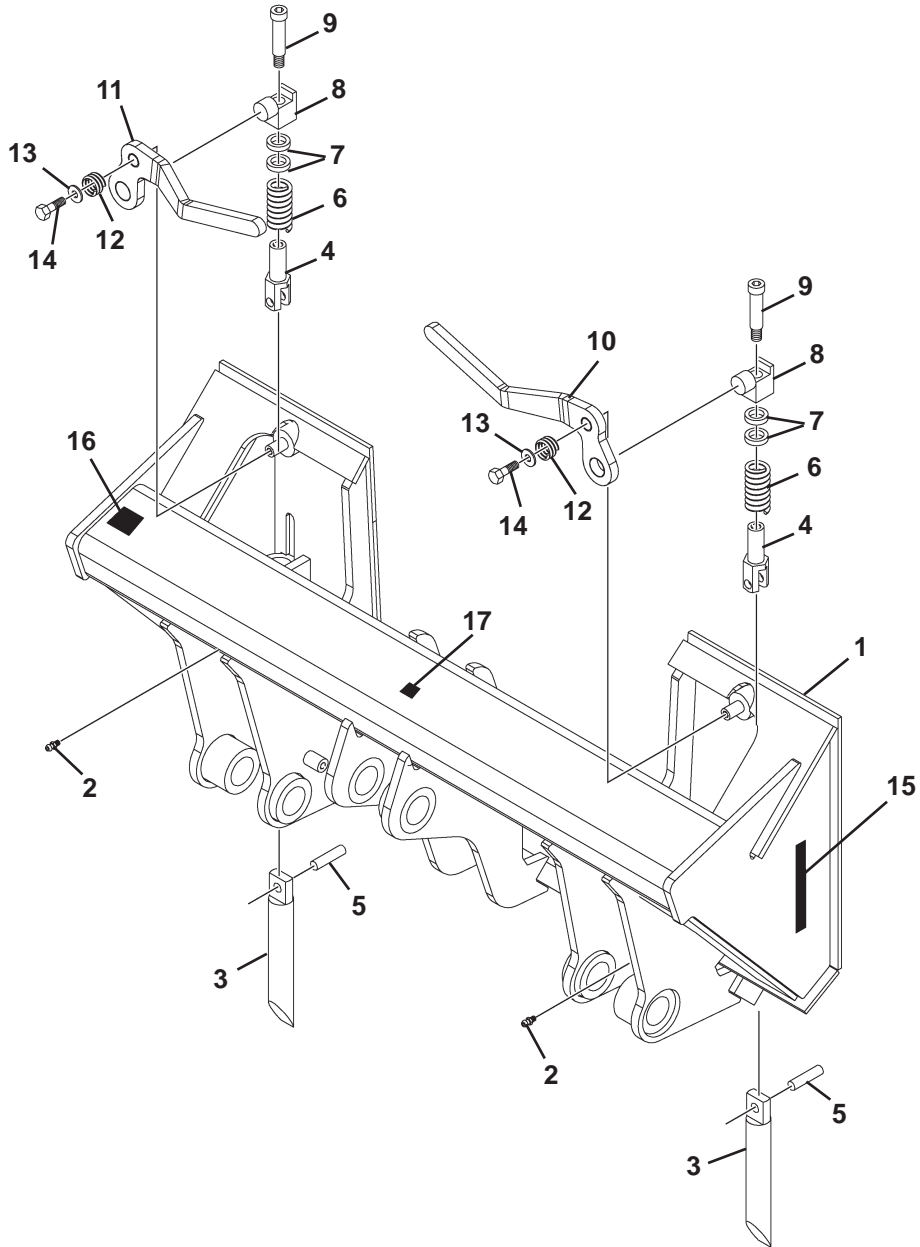
UNIVERSAL ADAPTER

ASSEMBLY #12193

(TCM E804/E806)



THE
M
A
J
O
R



UNIVERSAL ADAPTER

ASSEMBLY #12193

(TCM E804/E806)

<u>ITEM</u>	<u>QTY.</u>	<u>PART NO.</u>	<u>DESCRIPTION</u>
1	1	33368	Adapter Bracket
2	2	6616	Grease Fitting
3	2	87328	Lock Pin
4	2	87329	Clevis
5	2	87337	Roll Pin
6	2	87334	Clevis Spring
7	4	33056	Spacer
8	2	87330	Bearing End Lock Pin
9	2	87335	Shoulder Bolt
10	1	87342	Right Lock Handle
11	1	87331	Left Lock Handle
12	2	87333	Lock Handle Spring
13	2	1514	.38" Flat Washer
14	2	1044	.38" UNC x 1.25" Hex Capscrew
15	1	40501	Major Logo, Vertical
16	1	-----	Serial Number Identification Tag Location
17	1	4338	Made in USA Decal

UNIVERSAL ADAPTER

ASSEMBLY #12492

(Ingersoll-Rand VR530/VR642)

<u>ITEM</u>	<u>QTY.</u>	<u>PART NO.</u>	<u>DESCRIPTION</u>
1	2	1044	.38" UNC x 1.25" Hex Capscrew
2	2	1514	.38" Flat Washer
3	2	87333	Lock Handle Spring
4	1	87331	Left Lock Handle
5	2	87335	Shoulder Bolt
6	2	87330	Bearing End Lock Pin
7	4	33056	Spacer
8	2	87334	Clevis Spring
9	2	87329	Clevis
10	2	87328	Lock Pin
11	2	87337	Roll Pin
12	2	6616	Grease Fitting
13	1	87342	Right Lock Handle
14	1	17892	Adapter Bracket
15	1	4338	Made In USA Decal
16	1	40501	Major Logo, Vertical
17	1	-----	Serial Number Identification Tag Location

UNIVERSAL ADAPTER

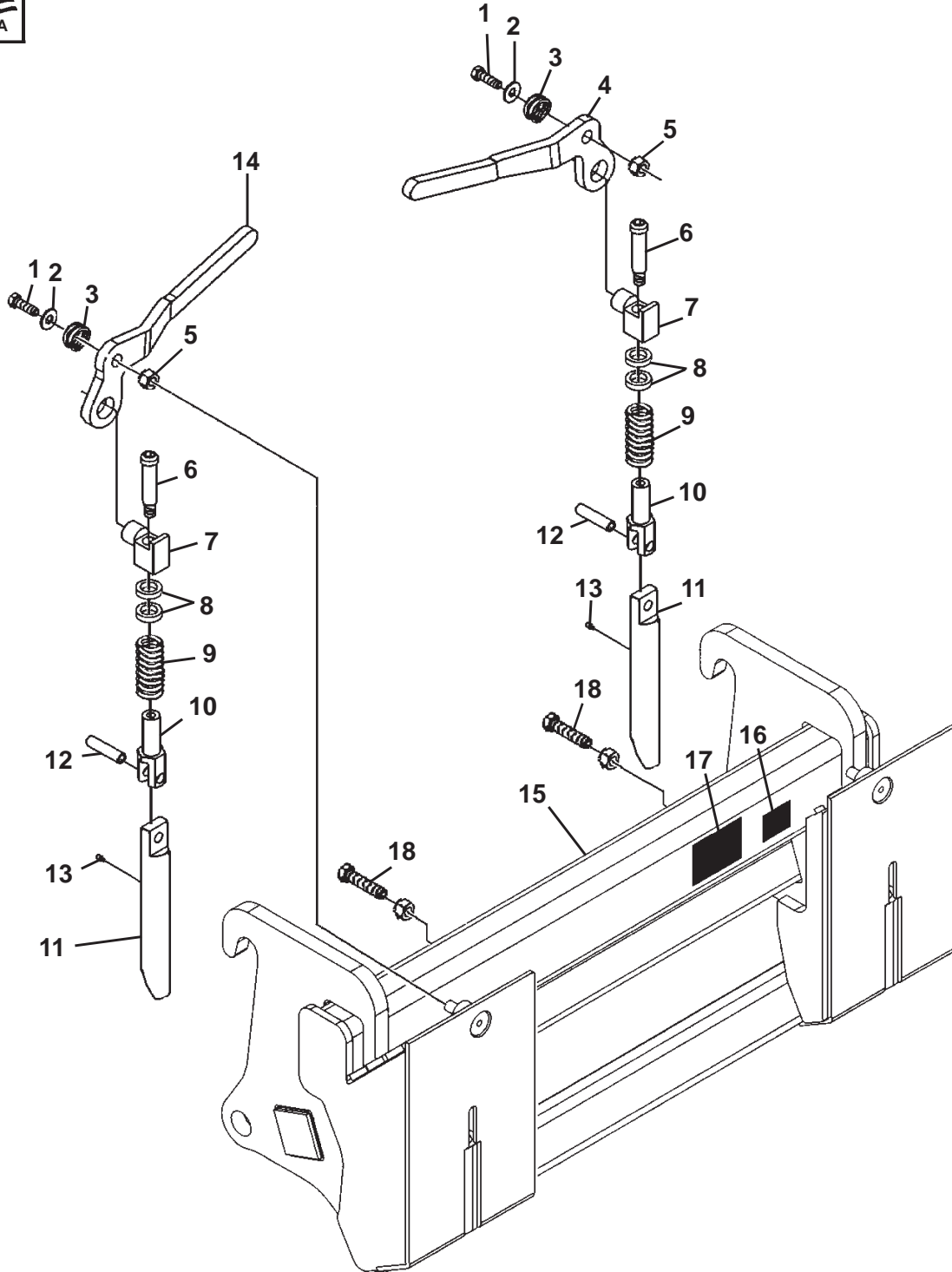
ASSEMBLY #12670

(CAT IT/TH)

<u>ITEM</u>	<u>QTY.</u>	<u>PART NO.</u>	<u>DESCRIPTION</u>
1	2	1044	.38" UNC x 1.25" Hex Capscrew
2	2	1514	.38" Flat Washer
3	1	87333	Lock Handle Spring
4	1	87331	Left Lock Handle
5	2	87335	Shoulder Bolt
6	2	87330	Bearing End Lock Pin
7	4	33056	Spacer
8	2	87334	Clevis Spring
9	2	87329	Clevis
10	2	87328	Lock Pin
11	2	87337	Roll Pin
12	2	6616	Grease Fitting
13	1	87342	Right Lock Handle
14	1	101251	Adapter Bracket
15	1	4338	Made In USA Decal
16	1	40501	Major Logo, Vertical
17	1	-----	Serial Number Identification Tag Location

UNIVERSAL ADAPTER

ASSEMBLY #12712
(Atlas/Coyote AR45E & AR65)



UNIVERSAL ADAPTER

ASSEMBLY #12712

(Atlas/Coyote AR45E & AR65)

<u>ITEM</u>	<u>QTY.</u>	<u>PART NO.</u>	<u>DESCRIPTION</u>
1	2	1044	.38" UNC x 1.25" Hex Capscrew
2	2	1514	.38" Flat Washer
3	2	87333	Lock Handle Spring
4	1	87331	Left Lock Handle
5	2	1536	.38" UNC Nylock Nut
6	2	87335	Shoulder Bolt
7	2	87330	Bearing End Lock Pin
8	4	33056	Spacer
9	2	87334	Clevis Spring
10	2	87329	Clevis
11	2	87328	Lock Pin
12	2	87337	Roll Pin
13	2	6616	Grease Fitting
14	1	87342	Right Lock Handle
15	1	102170	Adapter Bracket
16	1	4338	Made In USA Decal
17	1	-----	Serial Number Identification Tag Location
18	2	1116	.62" UNC x 2.00" Hex Capscrew
	2	1244	.62" UNC Hex Jam Nut

UNIVERSAL ADAPTER
ASSEMBLY #12716
(Komatsu WA75/85/95 & Zettlemeier)

<u>ITEM</u>	<u>QTY.</u>	<u>PART NO.</u>	<u>DESCRIPTION</u>
1	2	1044	.38" UNC x 1.25" Hex Capscrew
2	2	1514	.38" Flat Washer
3	2	87333	Lock Handle Spring
4	1	87331	Left Lock Handle
5	2	1536	.38" UNC Nylock Nut
6	2	87335	Shoulder Bolt
7	2	87330	Bearing End Lock Pin
8	4	33056	Spacer
9	2	87334	Clevis Spring
10	2	87329	Clevis
11	2	87328	Lock Pin
12	2	87337	Roll Pin
13	2	6616	Grease Fitting
14	1	87342	Right Lock Handle
15	1	102229	Adapter Bracket
16	1	4338	Made In USA Decal
17	1	-----	Serial Number Identification Tag Location
18	2	1116	.62" UNC x 2.00" Hex Capscrew
	2	1244	.62" UNC Hex Jam Nut

UNIVERSAL ADAPTER

ASSEMBLY #12760

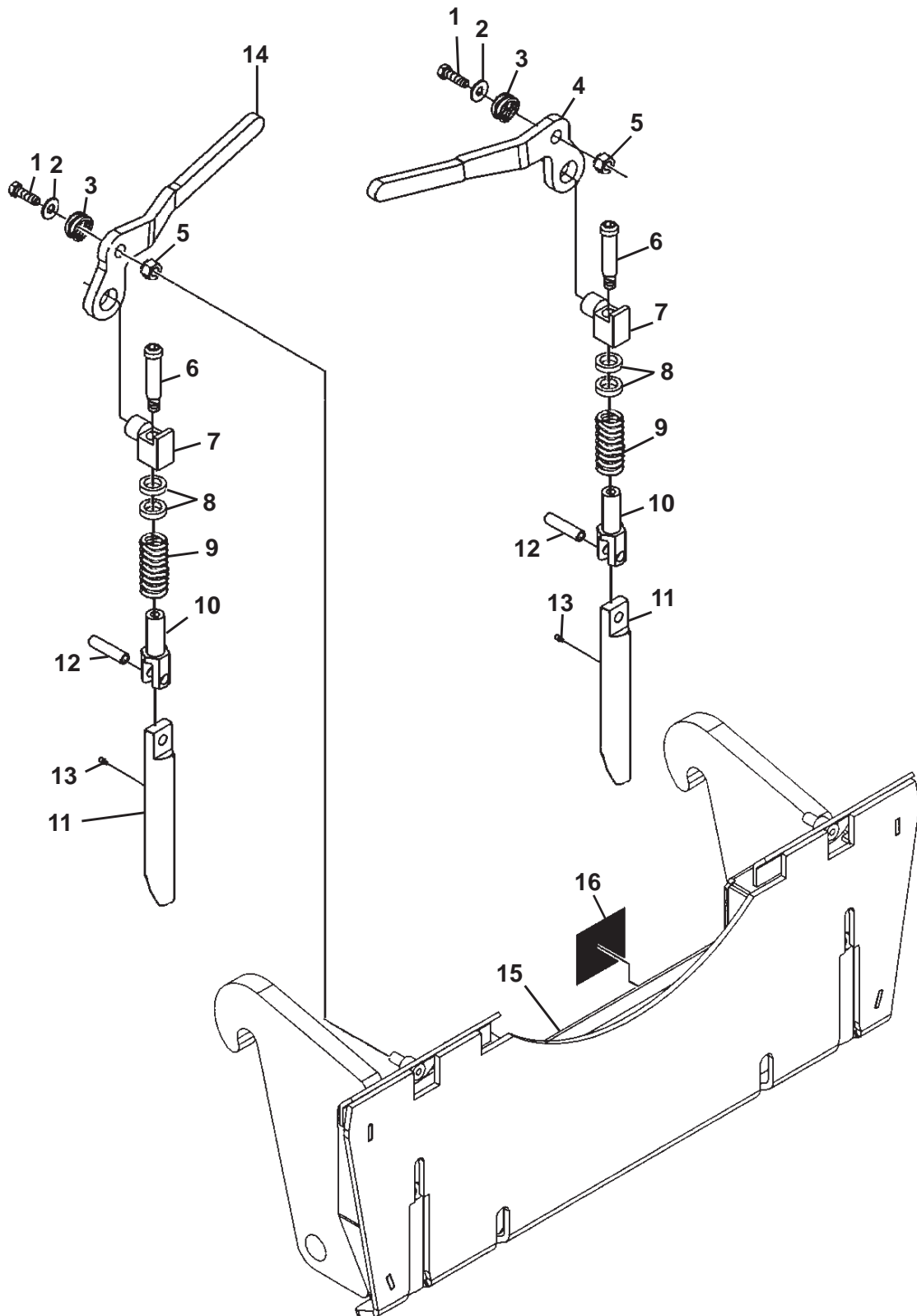
(Atlas/Coyote AR95)

<u>ITEM</u>	<u>QTY.</u>	<u>PART NO.</u>	<u>DESCRIPTION</u>
1	2	1044	.38" UNC x 1.25" Hex Capscrew
2	2	1514	.38" Flat Washer
3	2	87333	Lock Handle Spring
4	1	87331	Left Lock Handle
5	2	1536	.38" UNC Nylock Nut
6	2	87335	Shoulder Bolt
7	2	87330	Bearing End Lock Pin
8	4	33056	Spacer
9	2	87334	Clevis Spring
10	2	87329	Clevis
11	2	87328	Lock Pin
12	2	87337	Roll Pin
13	2	6616	Grease Fitting
14	1	87342	Right Lock Handle
15	1	103067	Adapter Bracket
16	1	4338	Made In USA Decal
17	1	-----	Serial Number Identification Tag Location
18	2	1116	.62" UNC x 2.00" Hex Capscrew
	2	1244	.62" UNC Hex Jam Nut

UNIVERSAL ADAPTER

ASSEMBLY #14820

(John Deere 344)



UNIVERSAL ADAPTER

ASSEMBLY #14820

(John Deere 344)

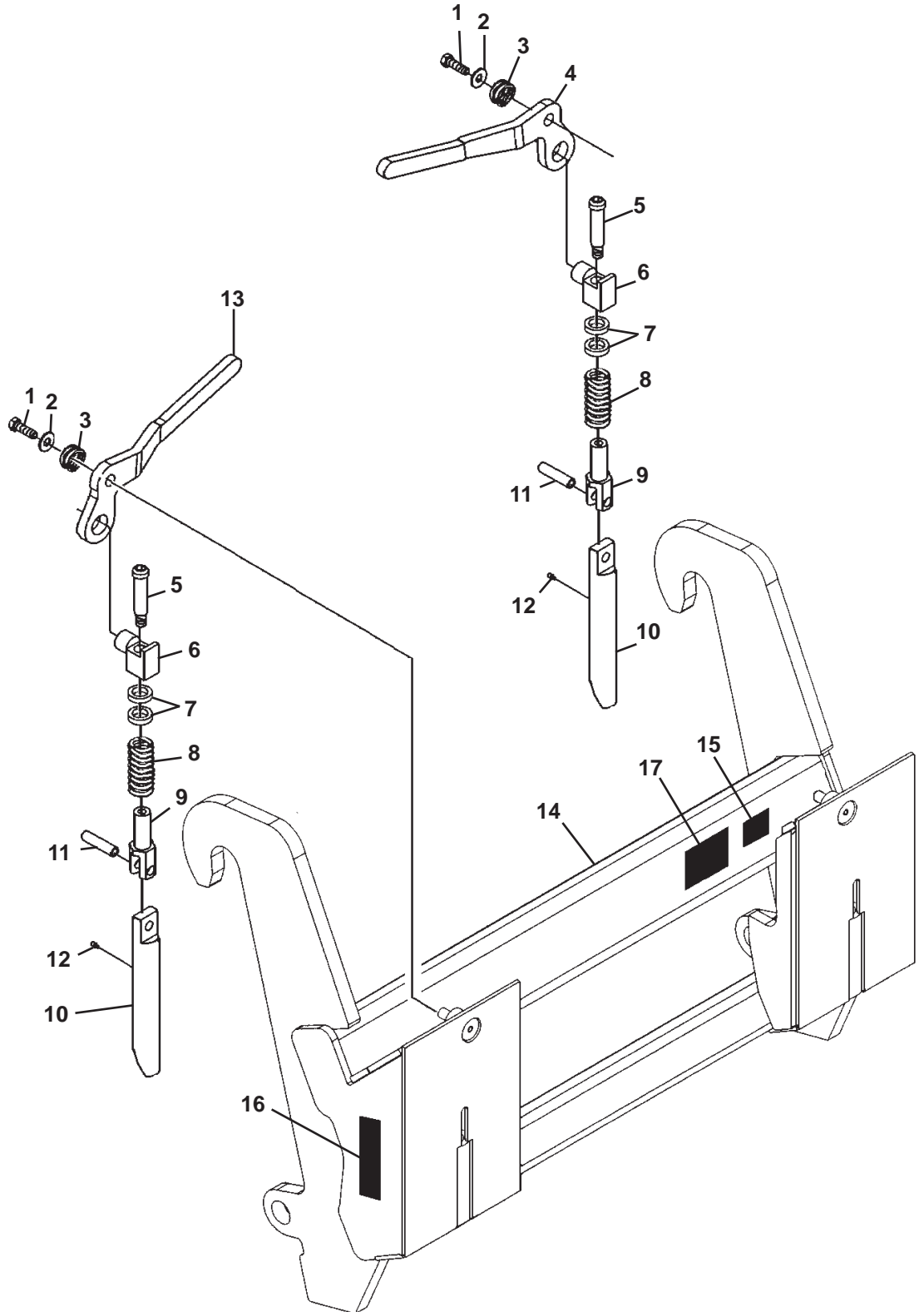
<u>ITEM</u>	<u>QTY.</u>	<u>PART NO.</u>	<u>DESCRIPTION</u>
1	2	1050	.38" UNC x 2.75" Hex Capscrew
2	2	1800	.38" Hard Flat Washer
3	2	87333	Lock Handle Spring
4	1	87331	Left Lock Handle
5	2	1536	.38" UNC Nylock Nut
6	2	87335	Shoulder Bolt
7	2	87330	Bearing End Lock Pin
8	4	33056	Spacer
9	2	87334	Clevis Spring
10	2	87329	Clevis
11	2	87328	Lock Pin
12	2	87337	Roll Pin
13	2	6616	Grease Fitting
14	1	87342	Right Lock Handle
15	1	14813	Adapter Bracket
16	1	-----	Serial Number Identification Tag Location

UNIVERSAL ADAPTER

ASSEMBLY #15002
(JCB Q-Fit 214/115 & New Holland Versattach)



16
**THE
M
A
J
O
R**

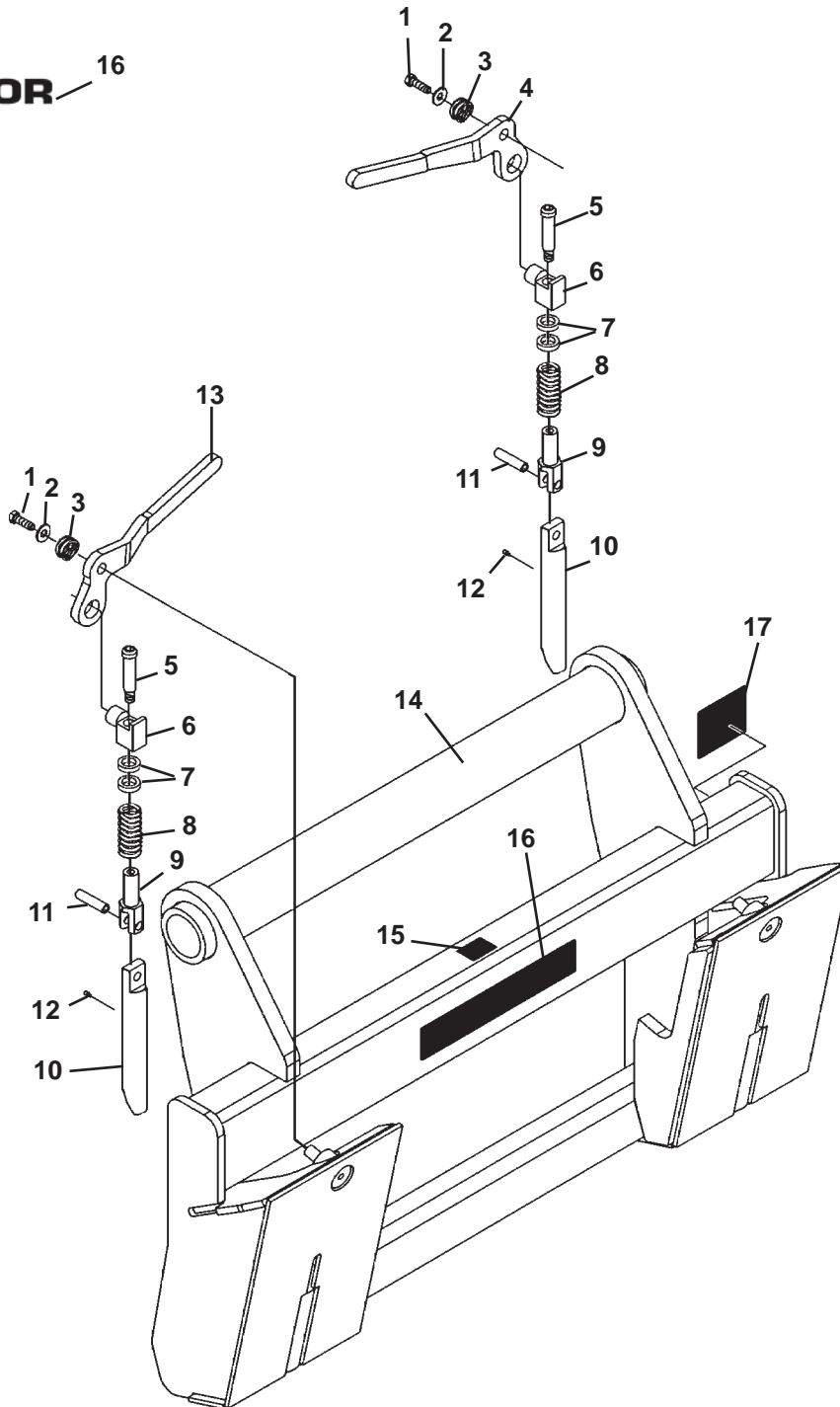


UNIVERSAL ADAPTER
 ASSEMBLY #15002
 (JCB Q-Fit 214/115 & New Holland Versattach)

<u>ITEM</u>	<u>QTY.</u>	<u>PART NO.</u>	<u>DESCRIPTION</u>
1	2	1044	.38" UNC x 1.25" Hex Capscrew
2	2	1514	.38" Flat Washer
3	2	87333	Lock Handle Spring
4	1	87331	Left Lock Handle
5	2	87335	Shoulder Bolt
6	2	87330	Bearing End Lock Pin
7	4	33056	Spacer
8	2	87334	Clevis Spring
9	2	87329	Clevis
10	2	87328	Lock Pin
11	2	87337	Roll Pin
12	2	6616	Grease Fitting
13	1	87342	Right Lock Handle
14	1	33380	Adapter Bracket
15	1	4338	Made In USA Decal
16	2	40501	Major Logo, Vertical
17	1	-----	Serial Number Identification Tag Location

UNIVERSAL ADAPTER

ASSEMBLY #17176
(Manitou)



UNIVERSAL ADAPTER

ASSEMBLY #17176

(Manitou)

<u>ITEM</u>	<u>QTY.</u>	<u>PART NO.</u>	<u>DESCRIPTION</u>
1	2	1044	.38" UNC x 1.25" Hex Capscrew
2	2	1514	.38" Flat Washer
3	2	87333	Lock Handle Spring
4	1	87331	Left Lock Handle
5	2	87335	Shoulder Bolt
6	2	87330	Bearing End Lock Pin
7	4	33056	Spacer
8	2	87334	Clevis Spring
9	2	87329	Clevis
10	2	87328	Lock Pin
11	2	87337	Roll Pin
12	2	6616	Grease Fitting
13	1	87342	Right Lock Handle
14	1	17177	Universal Quick Attach Mount
15	1	4338	Made In USA Decal
16	1	40502	Logo Decal
17	1	-----	Serial Number Identification Tag Location